

PROVIX.NET
Now I CAN SEE!



Camera Systems, Lighting & Alarms

SAFETY SYSTEMS FOR COMMERCIAL VEHICLES

sales@provix.net • www.PROVIX.net • (888)434-0253



PROVIX.NET
Now I CAN SEE!

Provox Safety Systems Deployed By Utilities and Energy Companies

Cameras, Lights and Video Systems for vehicles, equipment and operations



- Chalk River Laboratory
- Pinawa Laboratory
- Whiteshell Laboratory



Camera Systems, Lighting & Alarms

SYSTEMS FOR UTILITY EQUIPMENT

PROVIX is Vision Enhancement

Provox supplies cameras, lighting and safety systems for utilities, power generators, and electrical contractors.

FLIR Thermal Imaging Cameras, Rearview and 360 Cameras and Proximity detection for Vehicles and Equipment, Intrinsically safe Flashlights, Flashover cameras, Recording Systems, Dashcams and Wireless camera systems. Explosion proof cameras. Complete custom camera systems that can include thermal vision, remote viewing capability, wireless recording, programmed and triggered event monitoring, night vision and safer, more productive operations in any environment.

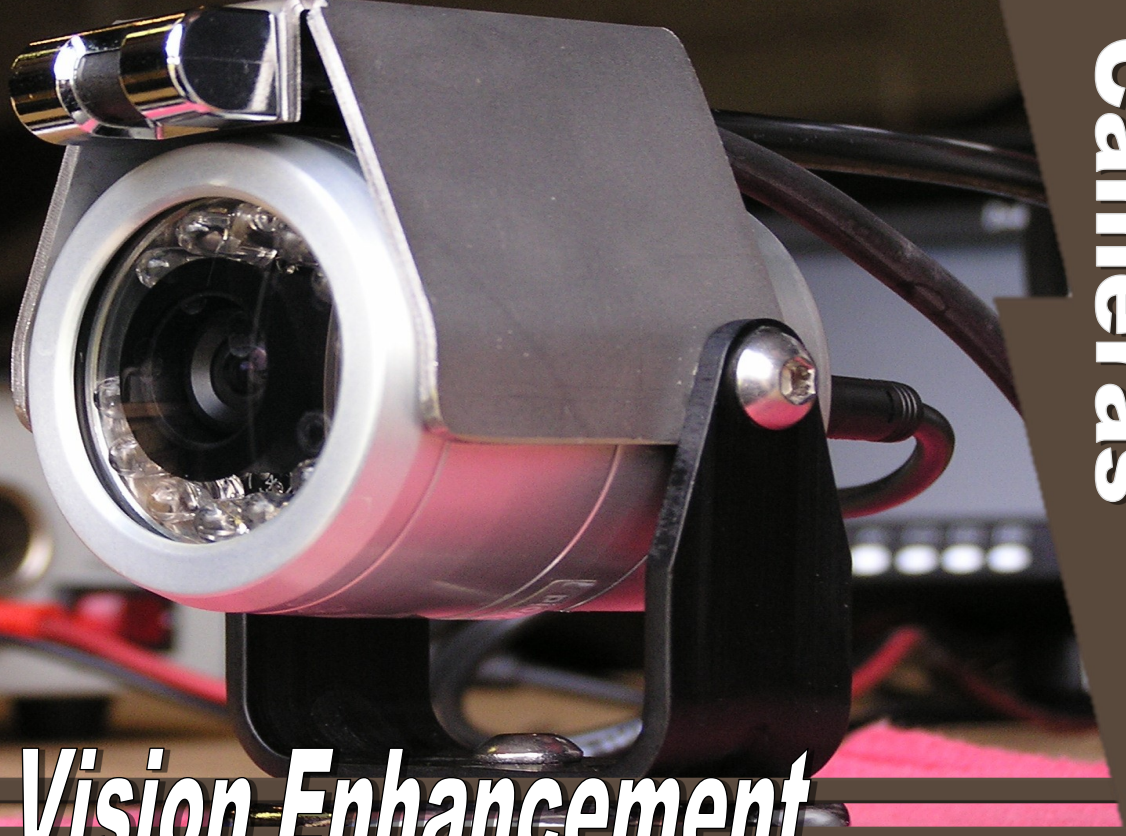
GoLight remote controlled spotlights, KH Cold weather Remote SearchLights, Cord Reels, Hot Stick tools- LitFinger and LitLink, proximity and warning lights/ light bars. Vehicle and Equipment lighting from SWS, Whelan, PSE Amber, SoundoffSignal, Provox, Hella, Nordic and ABL
Portable LED Work Lights

Complete Installation Service of Lights, Cameras, and other vehicle and equipment safety systems.

We supply a variety of safety and video systems such as :

- Rear-View Camera systems
- Self-adjusting Reversing alarms
- Warning Lights/ Light bars
- Remote Controlled Spot Lights
- Portable Work Lights
- Confined Space Communication System
- Sewer Inspection Camera System
- Incident Recording Systems
- Fleet management/ GPS Tracking
- Dash Cams
- Camera Wash and Air Cleaning Systems
- Traffic Advisors
- SWS Lights
- Go Lights
- K&H lights
- Flood/ Spot Work Lights
- LED Strobes
- Proximity Detection/ Radar Sensor Systems





ProVix is Vision Enhancement

TYPES OF CAMERAS

- HEATED
- SHUTTER
- THERMAL IMAGING
- PROCESS MONITORING
- SEWER INSPECTION
- 360° PANORAMIC
- PAN / TILT / ZOOM CAMERAS
- CAMERAS WITH INTEGRATED IR'S AND WHITE LIGHT
- TRIGGERED EVENT MONITORING

TYPES OF EQUIPMENT

- BUCKET TRUCKS
- SERVICE TRUCKS
- SKID STEER / DOZERS
- CRANES
- FORKLIFTS
- COMPACTOR
- EXCAVATOR
- ANY HEAVY EQUIPMENT

PROVIX INC.

6436 HWY 89 EAST,
ALLISTON, ON.
L9R 1V2

PROVIX.NET
Now I CAN SEE!

HYDRO EQUIPMENT HEATED CAMERA SYSTEM

VEC-SP70C3-HT-R



SHV-B086MSH-110C

Camera Specifications:

Image Device: SHARP
TV System: PAL / NTSC
Effective Pixels: 512 x 582 Pixels / 512 x 492 Pixels
Sensing Area: 4.9mm x 3.7mm
Scanning System: 2:1 Interlace
Sync. System: Internal
Resolution: 420TV lines
Horizontal Sync. Frequency: 15.625KHz / 15.734KHz
Vertical Sync. Frequency: 50Hz / 60Hz
Minimum Illumination: 0 Lux/F1.2 with IR
Microphone: Optional
Video Output: 1.0vp-p, 75Ohm
Gamma Consumption: 0.45
AGC: Auto
S/N Ratio: Better than 48dB
White Balance: Auto
Electronic Shutter: 1/60(NTSC) / 1/50(PAL) ~ 1/10,000 Seconds



VEC-70M3AV

Monitor Specifications:

LCD size: 7.0 inch (178 mm)
Brightness: 400cd/M²
Contrast Ratio: 500:1
Dimensions: 185 x 124 x 48 mm
Dimensions: 7 x 5 x 1 inch
Viewing Angle: Up/45°, Dwn/65°, R/65°, L/65°
Power Consumption: 12W (12V/1A)
Temperature Range: -20° C to 70° C
24/12 Volt Power Regulator Built-In
Supports 3 Camera Inputs

CALL TOLL FREE: 1-866-542-1343 — CONTACT: SALES@PROVIX.NET — VISIT: WWW.PROVIX.NET

HYDRO EQUIPMENT HEATED SHUTTER CAMERA SYSTEM

Part#: VEC-SP70C3-SH- R

SHUTTER KEEPS LENS
CLEAN WHEN NOT IN USE



Monitor Specifications:

LCD size: 7.0 inch (178 mm) **Brightness:**
400cd/M²

Contrast Ratio: 500:1 **Dimensions:** 185 x 124 x
48 mm **Dimensions:** 7 x 5 x 1 inch **Viewing**

Angle: Up/45°, Dwn/65°, R/65° , L/65°

Power Consumption: 12W (12V/1A)

Temperature Range: -20° C to 70° C -24/12
Volt Power Regulator Built-In - Supports 3
Camera Inputs

SHUTTER (LENS COVER) CAMERA SPECIFICATIONS:

VIEW ANGLE: 100° HORIZONTAL (120° DIAGONAL)

IMAGE SENSOR: OV7949 1/3" COLOR

RESOLUTION: 420 LINES

SHUTTER (LENS COVER): 1/80S~12USEC

TEMPERATURE RANGE: -20° C TO 70° C

ILLUMINATION: 0.1 LUX F:2.0

POWER (LED ON): 12 VDC, 450 MA

BUILT-IN MICROPHONE

WATER-TIGHT CABLES 20 METER (66 FT)

12 "IR" INFRARED LAMPS



REVERSING SAFELY WITH
PROVIX CAMERA SYSTEMS

Sprinter Van Camera System

VEC-SP70MIR2AV-VAN



Camera features:

- 120° viewing angle
- Night vision distance: 3-5m
- Waterproof
- Can operate in temperatures from -30° to +60°

Mirror Monitor Features

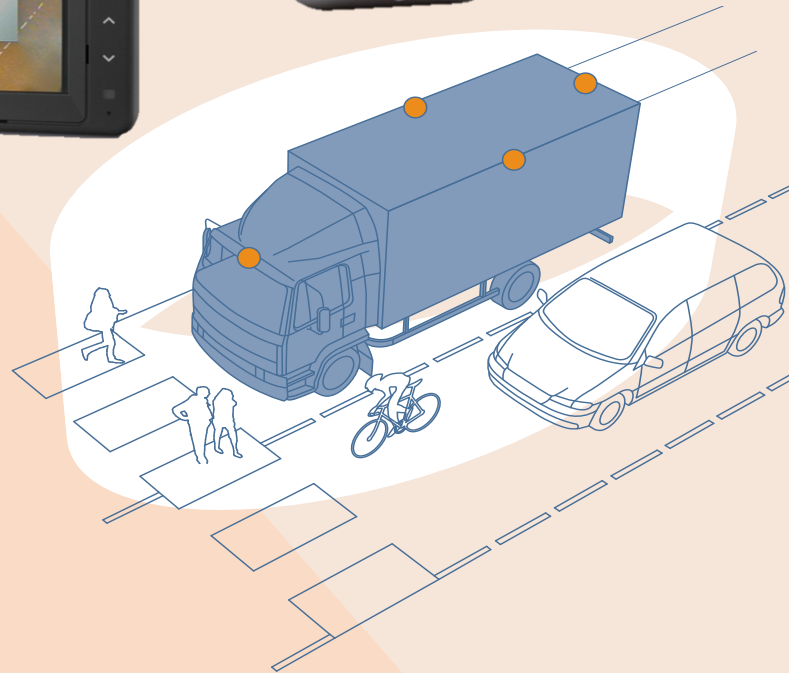
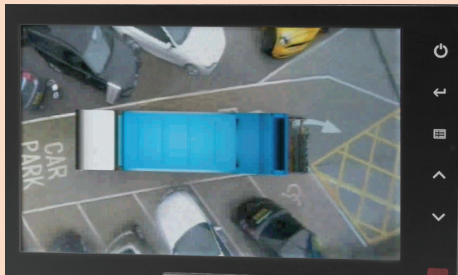
- Instantly switches from being a rearview mirror to a rearview camera
- Provides a clear view behind the vehicle
- 7" high resolution color LCD Mirror Monitor.
- On screen menu for all settings
- LED Backlit
- Two Video inputs
- 11V-32V DC power input, suitable for all types of commercial vehicles
- Monitor will automatically activate camera when vehicle is put in reverse even when off or in stand-by

Increase safety, decrease insurance costs!

Aerial View Camera System

4 Cameras, 1 Image, 0 Blind Spots

Operator has birds eye view of equipment and surroundings



Features & Benefits

- Applicable for ALL mobile equipment
- Four 180 Camera Lenses cover the entire perimeter and surroundings, including all blind spots
- Real-time video output
- Birds Eye View of your equipment and surroundings
- Comprehensive "all-round" view of vehicle in a single image

360° Aerial View provides the operator with full situational awareness of anyone or anything that is behind, in front, or on either side of the vehicle

Four cameras provide images from each side of the vehicle- those images are then then stitched together much like taking a panoramic picture.

The operator of the vehicle has a Split Screen view that displays both the 360° Aerial view as well as the video display from camera facing in the direction of travel.

No operator intervention is required- Camera views are triggered automatically based on the direction of travel.

360° Camera lens totally eliminates all blind spots

Split Screen Viewing eliminates Screen clutter and offers rapid identification of obstacles or people.

360° camera system is suitable for any type of equipment where the operator has reduced or restricted line of sight or "blindspots"

Benefits of 360° Aerial View

Benefits of the system extend beyond reducing collisions with people and objects. The comprehensive view of the surroundings aids the driver when maneuvering at low speed and minimizes damage, as drivers of larger vehicles can see and avoid objects lying on the ground.

360° Aerial View Systems are compatible with MDR digital recorders.

- Eliminates blind spots, improves safety
- Comprehensive view of the surrounding area in a single image
- Reduces collisions with people and objects

Key Features & Benefits:

- ✓ Surround view in a single image
- ✓ Four cameras with ultra wide-angle lenses
- ✓ Real-time 360 view
- ✓ On-site calibration
- ✓ Configurable viewing distance
- ✓ Eliminates blind spots
- ✓ Fast and smooth image delivery
- ✓ No frozen images, only real-time views on monitor
- ✓ Range can be tailored to the work environment
- ✓ Recognisable vehicle on monitor

Aerial View Camera System: How It Works

360° Aerial View Systems is an intelligent camera monitor system designed to assist low-speed maneuvering by providing the driver with a complete surround view of the vehicle in real time.

Provix offers a choice of 360° technologies, both of which work with four ultra-wide-angle cameras that each covers one full side of the vehicle with a viewing angle of over 180°. High-mounted on the front, rear and sides, the calibrated cameras capture all of the surrounding area including the blind spots of the vehicle or machine.

The four live images are simultaneously sent to an electronic control unit (ECU) where they are instantly processed, combined, blended and stitched. The distortion from the wide-angle camera lens is also corrected before delivering a clear, single, smooth, real-time image onto the driver's monitor.

Rear View - Driver Facing



Front View - Road Facing



The SmartWitness CP2 is the world's most advanced incident camera with 1080p HD video, Cellular or WiFi connectivity, live GPS position and driver behavior reports to support post incident analysis. The CP2 will record exactly what happened before, during and after an incident. It will record the driver's view of the road, vehicle location, impact force, audio, speed, acceleration, braking and steering. We recommended a second camera for recording driver and interior views.



Features:

- 1080P HD video with 150° wide angle lens
- Up to 128 GB SD storage
- Real-time video sent via email or to your telematics software
- Up to 166 hours of local storage
- Instant notification of events & live GPS location tracking
- Tamper-resistant design
- Integrated WiFi, bluetooth and cellular modem

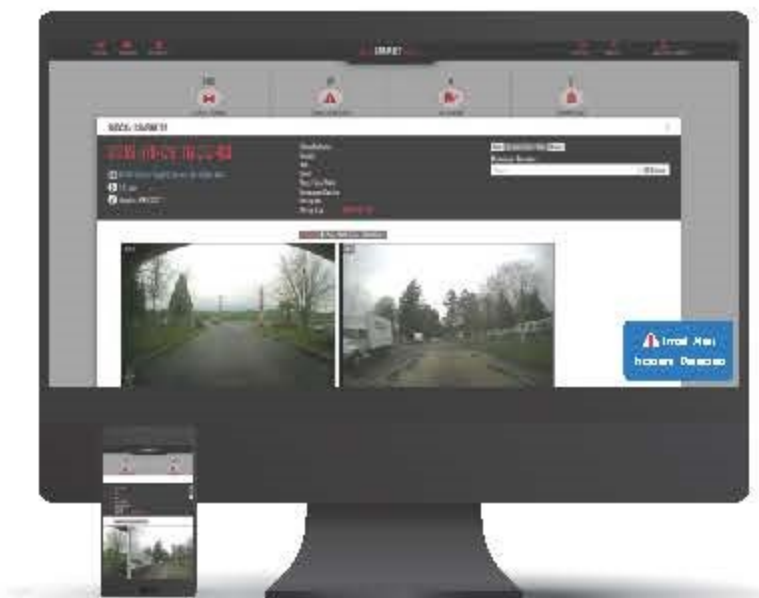
Driver Protection Against:

- Staged Accidents
- False and/or Exaggerated Claims
- Conflicting Reports of Incidents
- Driving allegations (speeding, traffic signal violation & swerving)

Choose your solution

1 Video Alerts

SmartMail delivers video evidence and drive data within moments of an incident. It may be a road collision, unsafe braking or speeding event, driver-initiated panic button or possibly someone just feels insecure and needs to know you're looking out for them.



2 Video Tracking

SmartView, is similar to SmartMail but delivers more advanced features such a vehicle location history and drive behavior reports. SmartView is a perfect solution for fleets who require all of the benefits of in-vehicle video and basic GPS tracking.



3 Video Telematics

SmartAPI enables SmartWitness video and data to be seamlessly integrated with your existing telematics software, combining video with telematics data, such as ELD, HOS, IFTA, dispatching provides a single source for all fleet management needs.



Anti Fatigue Monitoring System

PROVIX.NET
Now I CAN SEE!



Key Benefits:

- ✓ Forward collision detection
- ✓ Remote downloading of recorded videos from DVR/ server
- ✓ Storage devices: SSD, SD card
- ✓ HD alarm recording
- ✓ Detect & warn operator of: fatigue, distraction, phone calls, smoking & no driver
- ✓ Support dual stream, sub-stream back-up & network transmission
- ✓ Display of real-time monitoring videos on the operator
- ✓ Supports 2G/ 3G/ 4G/ WIFI/ GPS tracking
- ✓ Automatic data uploads
- ✓ GPS track recording, displaying current speed & location
- ✓ With WiFi station & AP mode
- ✓ Durable vehicle H.264 DVR with waterproof hard disk box

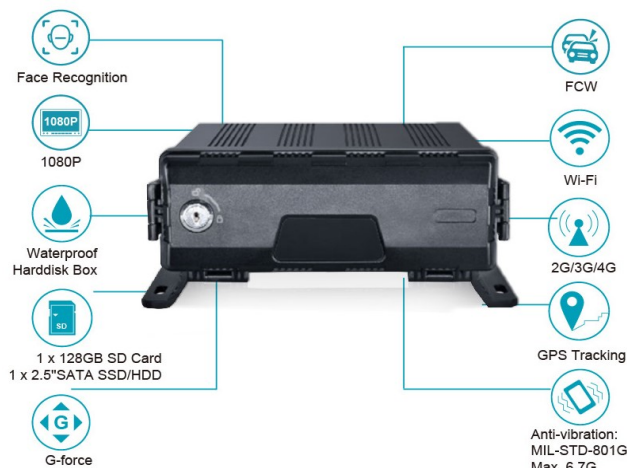
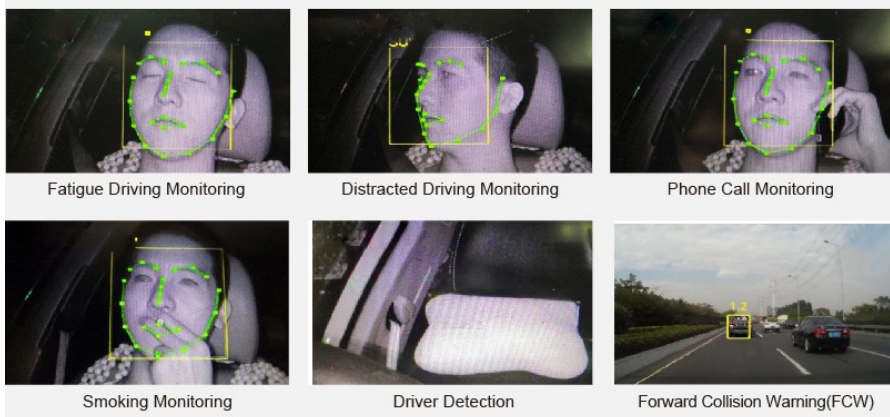
Anti Fatigue Monitoring System by Provix Inc.

Provix Driver Monitoring System is integrated with advanced forward collision warning, detection of fatigue, distraction, driver absence, phone usage/ texting, and smoking to improve driving safety. Real-time remote monitoring and H.264 compression.



Anti Fatigue Monitoring System

PROVIX.NET
Now I CAN SEE!

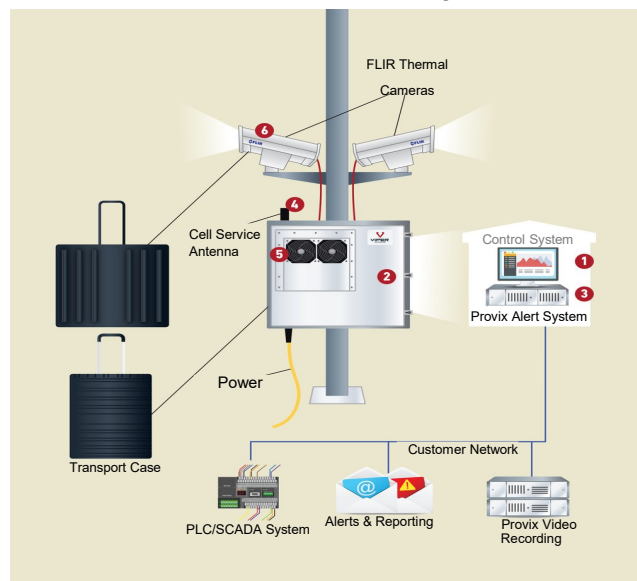


Specifications

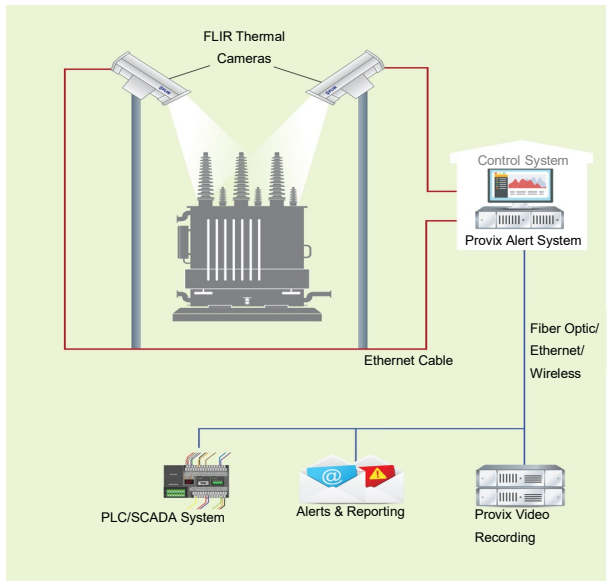
System	Operating System	Linux
	Operating Interface	Graphical menu operating interface (OSD)
	Video Permission	Administrator & user setting
Video	Video Output	Max 8ch 1080P analog high definition
	CVBS Output	1CH 6pin aviation connector output PAL/NTSC & 1CH 4pin aviation connector output PAL/NTSC
	HD Output	1CH VGA output, 1080P
	Video Display	1, 2, 3, 4, 8, 9CH
	Video Standard	PAL: 25FPS, NTSC: 30FPS
	Compression	H.264 main profile
	Audio	Audio Input
Audio Output		2 Channels
Record Format		Synchronized video & audio recording
Audio Compression		ADPCM
Digital Processing & Storage	Video Resolution	8*1080P(1920*1080)
	Video Bit Rate	64kbps~4Mbps/channel
	Storage	56~2700MB/(channel*hour)
	Audio Bit Rate	32kbps
	Storage	2.5 inch SATA / SSD * 1, max 2TB; SD card * 1, max 128GB
Alarm	Alarm Input	8 Channels
	Alarm Output	2 Channels, 1 Buzzer
	Motion Detection	Adjustable high/ low sensitivity
Interface for Communication	IR	1 Channel
	RS232	2 Channels
	RS485	2 Channels
	CAN	1 Channel
	RJ45	1 Channel
	USB2.0	1 Channel
	USB3.0	1 Channel
Wireless	2G/3G/4G	Optional
	WIFI	Standard
	WIFI hotspot/AP	Available
GPS	Optional	
G-Sensor/ Gyroscope	Available	
Software	Windows client	Available
	iOS client	Available
	Web portal	Available
Power	Input	10~32V
	Output	12V@4A
	Max Power Consumption	60W
	Standby Power Consumption	100mW
Electrical Specifications	Operating Temperature & Humidity	-20°C ~ 70°C <80%
	Electronic Clock	Built-in clock, Calendar
	Super Capacitor	Available

Proviz Substation Thermal Monitoring

Portable / Temporary



Permanent



Key Benefits

- Instant notification alarm for temperature beyond preset parameters and email alerts!
- Data collection distribution
- Reduced maintenance costs and enhanced personnel safety
- Reliable and rugged system
- Easy integration into existing plant control system
- Provides quantitative temperature readout and remote thermal monitoring for plant management

Heavy Equipment Camera System

PART NUMBER:SHV-70M3AV-HT



WITH DISTANCE GRID LINES

7" TFT- LCD color monitor with digital screen

Product: 7" TFT- LCD color monitor digital screen

Audio output: 1W.

Loudspeaker: one 15x24mm round loudspeaker.

Power supply: Automobile storage battery (10-32V).

Power consumption: about 6W .

Outer dimension: 1946.6mm (W) x 128mm (H) x 39.3mm (T)

Dot pitch: 0.192 (H) x 0.1805 (V).

Resolution: 800x3 (RGB) x 480.

Contrast: 500:1.

Brightness: 400 cd/ m².

Viewing angle: U: 50° / D: 60°, R/L: 70° /70°

Operating temperature: -20°C—+70°C, RH90%.

Storage temperature: -30°C—+80°C, RH90%

15 G-force rated shock resistant for the monitor



INTERNAL HEATER

1/3" COLOR CCD SENSOR SPECIFICATIONS

With Audio and IR

Image Device: SHARP

TV System: PAL/NTSC

Effective Pixels: 512x582 pixels / 512x492 pixels

Scanning System:2:1 Interlace

Resolution: 420TV lines

Minimum Illumination: 0 Lux/F1.2 with IR

Microphone: Included

Video Output: 1.0vp-p, 750hm

S/N Ratio: Better than 48dB

Current Consumption: Max. 300mA

Operating Temperature: -30°C-70°C, RH95% MAX

Storage Temperature: -40°C-80°C, RH95% MAX

Lens: f=3.6mm / 2.8mm F=2.0

Lens Angle 120°

15G-force rated shock resistant for the camera



CALL TOLL FREE: 1-888-434-0253 — CONTACT: SALES@PROVIX.NET — VISIT: WWW.PROVIX.NET

Excavator Camera System



7" Digital Screen TFT LCD
Color Quad Monitor with
Removable Sun Visor



Heavy Duty
Industrial
Boom/Stick
Camera



Heated Rear view
Counterweight Camera with
steel camera guard

- System is designed to eliminate blind spots, increase safety and improve productivity for the excavator operator.
- Reversing camera to enhance operators view of swing area
- Boom camera to view the operation of the excavator attachment; boring, ripping, crushing, cutting, lifting, etc.

Optional: Vibration mount

PROVIX.NET
NOW I CAN SEE!

Crane Camera System



- Vision Enhancement
- Increased Productivity
- Overhead Safety
- Less Material Damage



CALL TOLL FREE: 1-888-434-0253 — CONTACT: SALES@PROVIX.NET — VISIT: WWW.PROVIX.NET

Inspect Transformers from the Truck

High Voltage Inspections with Pan & Tilt with Thermal Imaging Cameras



Complete System Includes:

- 7" color LCD high resolution screen with 2X Zoom Capability and RAM mount
- 25' System Power and Video Cable and 12 volt Power cable
- Mounting Hardware And Pan Tilt Assembly
- Integrated FLIR Thermal Camera
- Wireless Dash Control/Remote

The Thermal PTZ is a low cost, high resolution thermal imaging system that allows the user to see in total darkness.

Utilizing a 320 x 240 resolution FLIR Camera, the system can easily see targets from over 1500 feet.

The thermal core uses long-wave infrared sensor technology and can easily see through smoke, fog, rain and many other atmospheric conditions that could not easily be penetrated with other technologies.

The Thermal PTZ camera offers full 360° rotation and 135° tilt for complete situational awareness.

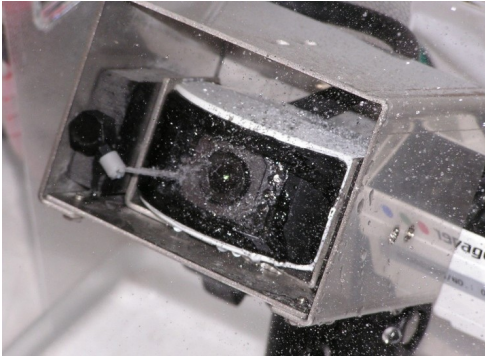


Take corrective action before problems occur!

Check!

- Load Tap Changers
- Insulator Bushings
- Standoff Insulators
- Lighting Arrestors
- Circuit Breakers
- Control Cabinets
- Batteries
- Power Transformers
- Mechanical Disconnects

Provix Camera- Wash System



Cleans the Camera lens of Dirt, Ice, Dust and Snow with the push of a button!

Features:

- Uses washer fluid for year round operation
- 12V High pressure pump
- 1 Gallon reservoir with mounting hardware
- Momentary rocker switch
- 30FT Electric Harness and Fluid Tubing kit. Custom lengths available
- Comes as a kit with 30" Harness. Custom lengths are available
- High Pressure Air Dry and Blow off system is available upon request.
- Air Dry system uses compressed air from air seat compressor or other available compressor. * Compressor is not included *



Add Ons:

- Up to four optional nozzles per kit
- An optional Timer for automatic cleaning

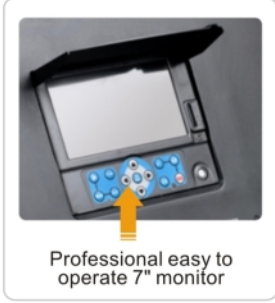
Custom Kits are available!

Proviz Inspection Camera System

20m, 30m, 40m Cable



- ◆ 1/3 inch Sony CCD camera, 120° wide view angle
- ◆ Stainless steel short camera head, IP 68 water proof level
- ◆ Sapphire glass lens cover, 12 white LEDs
- ◆ Diameter of camera: 23 mm, suitable for pipe dia. 25-200mm
- ◆ 20-40M fiberglass rod cable with stainless reel
- ◆ Cable reel rotatable in the case
- ◆ One touch record/still images button
- ◆ 7" TFT LCD monitor with DVR
- ◆ Rechargeable High capacity Li-battery (6600mA) for 8 hours continuous working
- ◆ Waterproof ABS suitcase with all parts included
- ◆ Optional feature: Meter counter/512Hz Sonde



Optional Features & Parts



Specifications

Camera Head		Cable Reel	
Sensor:	1/3" Sony CCD	Material:	Fiberglass rod cable
Head Dimension:	23mm (dia.) x 45mm (length)	Wheel:	Stainless steel wheel
Camera Material:	304# Stainless Steel	Cable Length:	20, 30 or 40m optional
View Angle:	120° wide angle	Connector:	Gold touch-point connector
Lens Cover:	Sapphire glass	Rotation:	Rotatable in the suitcase
Leds:	12 High Bright White LEDs	Wheel diameter:	33cm
Water Proof:	IP68/20m under water	Cable diameter:	5.2mm

LCD Display and DVR	
LCD Resolution:	800*480 pixels
Video Compress:	MPEG-4
Recording:	Video and audio recording
Picture:	Picture shot function
LCD Size:	7 inch
Menu Language:	9 Languages
Panel Control:	Any functions through buttons
External Memory:	SD Card (Max. 32GB)



Call: 1 888 434 0253

Contact: Sales@provix.net

Visit: www.provix.net

AFFORDABLE, HIGH-RESOLUTION THERMAL IMAGING WITH SEEKFUSION™ TECHNOLOGY

KEY CAMERA SPECS

- 320 x 240 Thermal Sensor
- ▼ 57° Field of View
- 🔥 -40 to 626F Temperature Measurement
- 👁️ SeekFusion™ Thermal + Visible
- 👉 Large Color Touch Screen
- 🌙🌞 Works Day & Night

PROVIX.NET
Now I CAN SEE!



Seek ShotPRO is the most advanced thermal imaging camera for building professionals. Snap photo and video and analyze immediately with new on-board thermography tools. Add spot measurements and temperature boxes to create time-saving reports on the spot. Precisely diagnose problems with 16x higher resolution than comparably priced cameras. Take full control of photos and video by adjusting the blend between visible and thermal images. Share and stream to any smartphone or tablet over WiFi. Mount to a tripod and live stream to colleagues to tackle tougher jobs in the challenging environments. Seek ShotPRO puts durable and sleek thermal imaging expertise in your pocket.

Designed and Manufactured in Santa Barbara, California with Global Components.

Product Name:	Seek ShotPRO
Product Type:	Thermal Imaging Camera

Single Unit	
Included in the box:	<ul style="list-style-type: none"> • Seek ShotPRO • Wrist Lanyard • Welcome Guide • USB Cable
Device Dimensions (H x W x D)	8 x 14 x 2.8 cm 3.125 x 5.5 x 1.1 inches
Device Weight:	7.2 ounces 205 grams
Box Dimensions (H x W x D)	18 x 12 x 4.5 cm 7 x 4.75 x 1.75 inches
Box Weight:	14.5 ounces 410 grams



On-Device Analysis

Capture, edit and analyze photos in the field - all from your device.



SeekFusion™

Find problems faster with adjustable blend of visible and thermal images.



More Pixels, More Precision

Sixteen times more resolution than the competition. Best in class thermal resolution.



WiFi Streaming

Stream live video to any mobile device for collaboration and fixed monitoring.

KEY FEATURES

320 x 240 Best in Class Thermal Resolution

Identify, diagnose and report problems faster with high resolution thermal images and video

SeekFusion™ Technology

See exactly what you're looking at with combined visible and thermal images

Large Color Touch Screen

3.5" color touchscreen with 640x480 resolution so you can see more detail

WiFi Live View

Stream a live thermal view onto your smartphone or tablet over WiFi

Long-Lasting Battery Life

Best-in-class battery life of up to 4 hours continuous thermal imaging

Durable, Pocket-Sized Housing

Built with a rugged, IP54 rating

BENEFITS & USES

Easy-to-Use Interface

Diagnose problems on-the-spot and analyzes images on your device

Inspect Electrical Panels, Connections, and Fuses

Find electrical faults faster and with more confidence

Check Ventilation Systems for Proper Installation

Ensure grilles, registers, and diffusers are sealed for maximum efficiency

Spot Duct Leaks Invisible to the Human Eye

Easily scan a large ducting network to reveal the air leaks

Identify Inefficient Air Handlers

Diagnose faulty equipment and improve energy efficiency

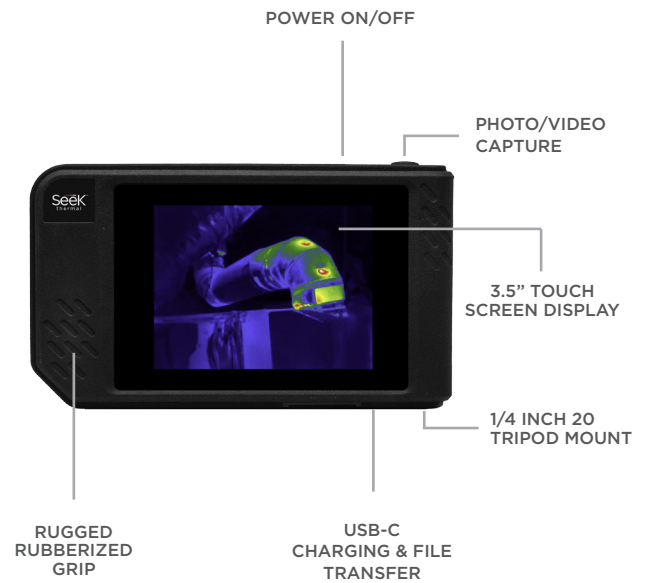
Find Missing Insulation

Easily find missing or poor-performing insulation in seconds

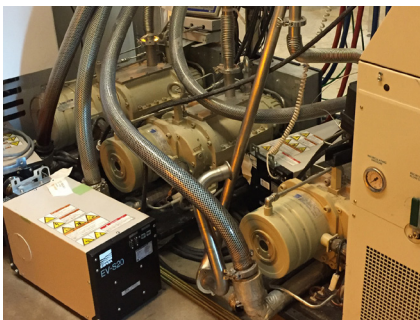
TECHNICAL SUMMARY

SPECIFICATIONS	DESCRIPTION
Thermal Sensor	320 x 240 (76,800 pixels)
SeekFusion™	Yes
Field of View	57 Degree FOV
Temperature Range	-40°F to 626°F (-40°C to 330°C)
Frame Rate	< 9 Hz
Focus	Fixed Focus
Light/Flash	Yes
Display	3.5" Color Display (648 x 480 Resolution)
Microbolometer	Vanadium Oxide
Thermal Sensitivity	< 70 mK
Spectral Range	7.5 - 14 Microns
User Interface	Intuitive Touch Screen
Temp. Display Scale	Fahrenheit, Celsius or Kelvin
Color Palettes	White, Black, Tyrian, Spectra, Iron, Prism, Amber & Hi
Storage Media	4GB Internal Storage
Battery	Up to 4 Hours Thermal Imaging
WiFi	WiFi enabled. Connect & stream via SeekView app

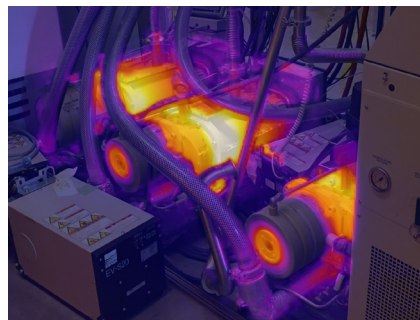
OVERVIEW



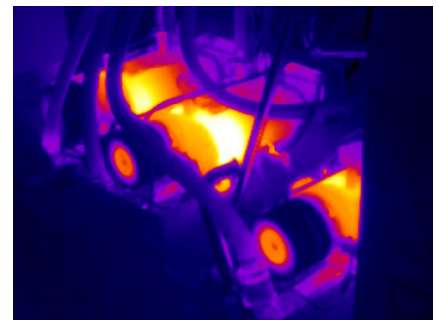
SEEKFUSION™



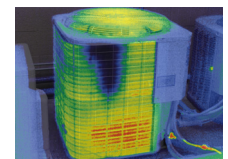
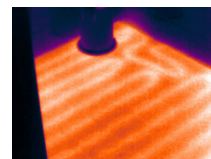
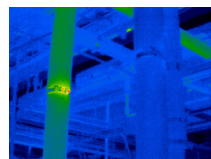
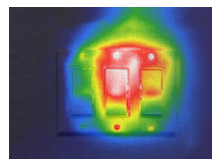
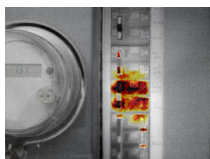
VISIBLE IMAGE



SEEKFUSION™ IMAGE



THERMAL IMAGE



More information at sales@provix.net

HEAD OFFICE

3 Greengage Rd., New Lowell, ON L0M 1J0 Canada
Toll Free: +1 (888) 434-0253 Telephone: +1 (705) 424-9960
FAX: +1 (705) 435-6419 E-mail: sales@provix.net

SALES OFFICE

1191 Lansing Ave. Unit 1, Sudbury ON P3A 4C4 CANADA
Telephone: +1 (705) 885-9994 E-mail: sales@provix.net

GPS Fleet Tracking System

Key Features:

Straightforward service plan options with flat rate billing

Email alerts in the event of speeding, unauthorized use, theft, or vehicle alert zone violation

Internal 200 mAh backup battery

Live technical and activation support

Vehicle Tracking Solutions Made Simple, Reliable, & Affordable.

Provox provides a turnkey GPS vehicle tracking service for commercial and municipal fleets. Provox GPS Fleet Tracking System is a fully-hosted, cloud-based vehicle tracking service.

Safety and security, for your vehicles and on the road, from the experts at Provox.

GPS Fleet Tracking System Advantages:

- ✓ **Accountability:** Verifiable reports confirming vehicle location and routes.
- ✓ **Tracking & Visibility:** monitor times (travel, onsite, start and end, idle), ignition events, and more
- ✓ **Asset Recovery:** view vehicle locations recorded every two or five minutes, including 60 days of stored history

Hardwired



OR

OBD II



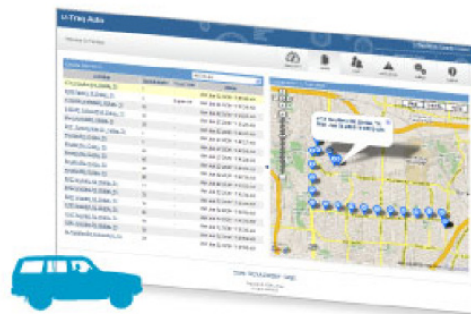
UPL-GPS-TRACKER-HW



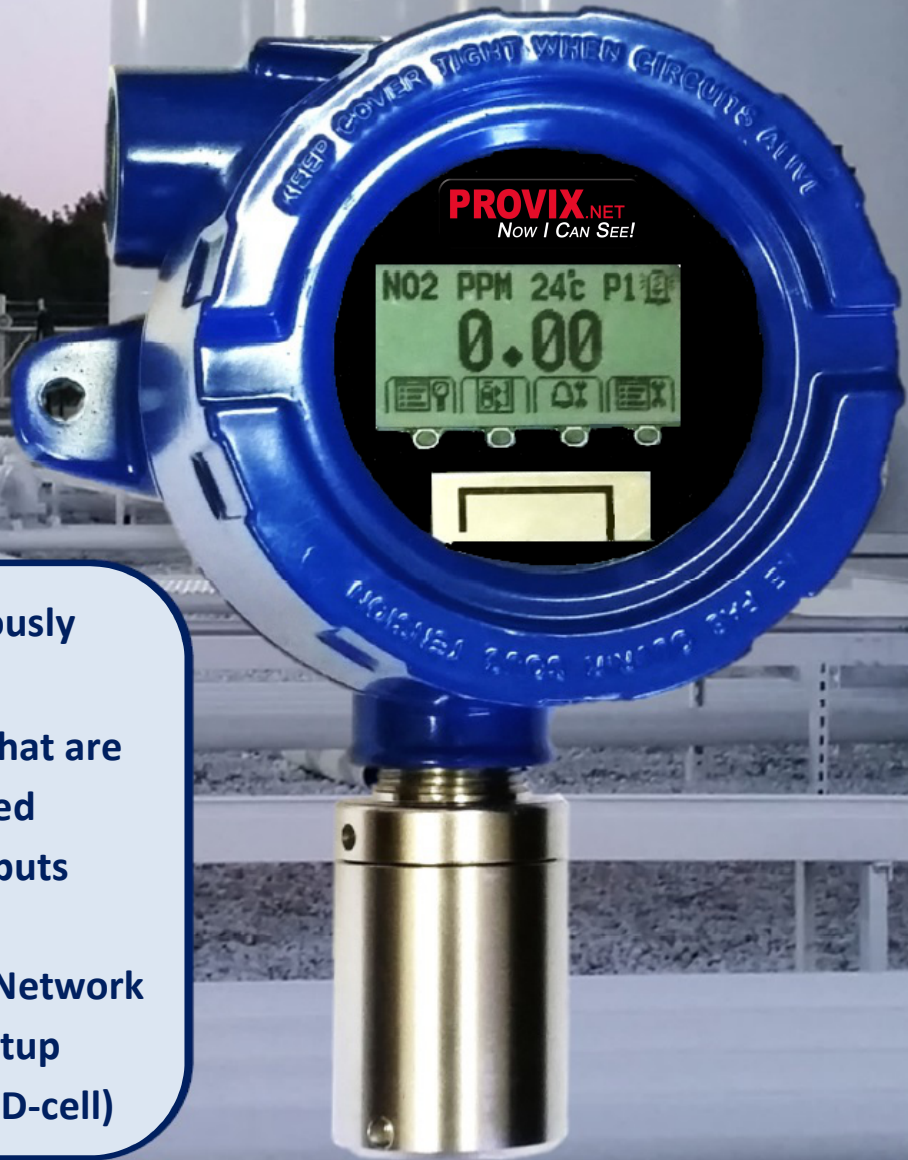
UPL-GPS-TRACKER-OBD



GPS	UPL-GPS-TRACKER-HW	UPL-GPS-TRACKER-OBD
Location Accuracy	2.0 meter CEP (with SBAS)	2.0 meter CEP (with SBAS)
PHYSICAL		
Dimensions	2.125 x 3.5 x 0.625", (54 x 89 x 16mm)	43 x 64 x 25 mm
Weight	3.7 oz, (106 g)	<52g
Connection Type	Captive 8 wire harness	OBD-II/EOBDII interface via J1962 compliant connector
GENERAL		
Communication Modes	UDP Packet data and SMS	UDP Packet data and SMS
Location Technology	50 channel GPS	50 channel GPS
Operating Voltage	12 and 24 volt vehicle systems	9-16 VDC Vehicle Systems
CELLULAR		
Data Support	SMS, GPRS	SMS, UPD
Operating Bands (MHz Band)	850/1900	850/1900
ENVIRONMENTAL		
Temperature	-30° to +70° C (operating) -40° to +85° C (storage)	-30° to +70° C (operating) -40° to +85° C (storage)
Humidity	95%RH @ 50° C non-condensing	95%RH @ 50° C non-condensing
Shock and Vibration	U.S. Military Standards 202G and 810F, SAE J1455	SAE J1455
EMC/EMI RoHS Compliant	SAE J1113; FCC-Part 15B; Industry Canada	CE, GCF, eMark (all pending) RoHS Compliant



PROVIX GAS DETECTION SYSTEM



- ✓ **Monitors up to 6 gases simultaneously**
 - **3 NDIR sensors**
 - **3 PnP (Plug-and-Play) sensors that are preconfigured and pre-calibrated**
- ✓ **6 Relays, 6 Digital I/O, 6 Analog inputs**
- ✓ **2 Analog outputs (4-20mA/0-2V)**
- ✓ **Modbus RTU over Wireless Mesh Network**
- ✓ **Remote control graphical menu setup**
- ✓ **Ultra-Low Power (1 year on single D-cell)**

PROVEN GAS DETECTION & MONITORING

Technical Specifications

SENSORS

- 3 Plug-and-Play Electrochemical sensors
 - Factory preconfigured and calibrated
 - CO, O₂, NO₂, NO, H₂S, and more
- 3 NDIR sensors
 - CH₄, CO₂, and more
- Remotely wired up to 100ft (30m)
- 6 Analog sensor inputs (4-20mA/0-2.0V)

ALARMS

- 4 Custom Alarm Levels with hysteresis and hold times
- Sensor Fail-High and Fail-Low
- Ability to associate relay outputs to alarm levels from a single sensor, or multiple sensors using logical "AND/OR"

IO CAPABILITIES

- 6 Digital input/output
- 6 Relay Ports
- 2 channels 4-20mA outputs ($V_{in,max}=32V$)

COMMUNICATION INTERFACES

- RS485, CONSPEC Trunk, Wireless
- Modbus RTU (wired/wireless)
- Mesh or Star Network

MENU & DISPLAY

- Intuitive menu navigation
- Password protected
- Quick info screen shows device settings
- Slide-show of real-time gas readings
- Graphical LCD display
- Dimmable RGB backlight
- Backlight color indicates monitor status

CONFIGURATION

- Local Menu Display
- Modbus Register Map or Wireless

USER INTERFACE

- IR remote control
- 4 simple buttons

INPUT POWER OPTIONS

- 6 - 56V AC/DC
- D-Cell Battery Operation (1 year)
- 100 - 240VAC 50/60Hz

POWER CONSUMPTION

- 2mA @ 24VDC
- Sleep modes with battery operation

TEMPERATURE & HUMIDITY RANGE

- -20 to +60°C, 0-95% RH non-condensing

WIRELESS FEATURES

- 1 year battery life (single D-cell)
- 2 miles (3.2 km) using external antenna
- 0.5 miles (0.8 km) using low cost internal antenna (break proof)
- Dual Band Support: 433MHz or 915MHz
- Modbus RTU over Wireless
- Self-healing, Self-forming, Mesh or Star
- Up to 250 Modbus Gateway nodes
- Each Gateway can support up to 32 wireless multi-gas monitors

WARRANTY

- Two years standard warranty

APPROVALS

- Class I Division I Groups ABCD, NEMA 4X
- Class I, Zone I, AEx d IIC, IP66
- IECEx Ex d II C, IP68
- ATEX 94/9/EC, EN50014, EN 50018
- SIL-1 (pending)



PROVIX FLIR Thermal Imaging Cameras



EX- Predictive Maintenance



EX- Predictive Maintenance



T-Series- Building & Electrical



A-Series - Automation



Scout- Personal Vision



K-Series- Firefighting



LE-Series- Law Enforcement



Test & Measurement- Meterlink

*Provix has certified thermographers on staff for consultation and installation support



FLIR Exx-Series

ADVANCED THERMAL IMAGING CAMERAS

SPECIFICATIONS

Model	E54	E76	E86	E96
IR resolution	320 × 240 pixels	320 × 240 pixels	464 × 348 pixels	640 × 480 pixels
Resolution with UltraMax® enhancement	—	307,200 pixels	645,888 pixels	1.2 megapixels
MSX® image enhancement	Yes: details from visual camera add depth and perspective			
Built-in visual camera	5 MP, fixed focus, with built in LED light			
Thermal sensitivity	<40 mK @ 30°C (86°F)	<30 mK @ 30°C (86°F), 42° lens	<30 mK @ 30°C (86°F), 42° lens	<30 mK @ 30°C (86°F), 42° lens
Temperature range	-20°C to 120°C (-4°F to 248°F); 0°C to 650°C (32°F to 1202°F)	-20°C to 120°C (-4°F to 248°F); 0°C to 650°C (32°F to 1202°F)	-20°C to 120°C (-4°F to 248°F); 0°C to 650°C (32°F to 1202°F); 300°C to 1500°C (572°F to 2732°F)	-20°C to 120°C (-4°F to 248°F); 0°C to 650°C (32°F to 1202°F); 300°C to 1500°C (572°F to 2732°F)
Optional temperature range	—	300°C to 1000°C (572°F to 1832°F)		
Accuracy	±2°C (±3.6°F) or ±2% of the reading			
Focus modes	Manual	Continuous laser distance meter (LDM), one-shot LDM, one-shot contrast, manual	Continuous LDM, one-shot LDM, one-shot contrast, manual	Continuous LDM, one-shot LDM, one-shot contrast, manual
Digital zoom	1–4x continuous			1–8x continuous
Measurement tools	3 spotmeters in live mode, 1 area meter in live mode	3 spotmeters in live mode, 3 area meters in live mode		
Measurement presets	None, center spot, hot spot, cold spot, 3 spots, hot spot-spot*	None, center spot, hot spot, cold spot, User Presets 1&2		
Available lenses	None (fixed lens)	14°, 24°, 42°, macro (2x)		
Lens identification	—	Automatic (FLIR AutoCal™)		
1-Touch Level/Span	Yes: automatic contrast enhancement			
Laser pointer	Yes			
Laser distance meter	—	Yes		
Area measurement information	—	—	Yes	
On-camera routing software	FLIR Inspection Route™ — enabled			
On-camera report building	Voice annotation and GPS tagging to images and video; on-screen text; sketch on infrared images from touchscreen			
FLIR software integration	FLIR Thermal Studio Starter, FLIR Thermal Studio, FLIR Thermal Studio Pro, FLIR Research Studio			
Radiometric JPEG	Yes			
IR, radiometric, visual video recording	Yes			
IR, radiometric, visual video streaming	Yes, over UVC (radiometric, non-radiometric, visual) and Wi-Fi (non-radiometric, visual)			
Communication modes	USB 2.0, Bluetooth, Wi-Fi, DisplayPort			
METERLINK®	Yes			
Display	640 × 480 pixels (VGA) Dragontrail® touchscreen			
Drop-testing	2 m (6.6 ft)			
Battery operation time	>2.5 hours, typical use			

*Hot spot to center spot Delta measurement



FLIR AutoCal™ Lenses

FLIR E76, E86, and E96 camera are compatible with all our interchangeable AutoCal lenses. The camera automatically recognizes when a new lens is attached and launches a wizard to begin auto-calibrating the camera with the lens—no need to send the camera in for service. This helps ensure the camera always produces high-quality images and precise thermal measurements.



WHAT LENS DO YOU NEED?

14°, 29 mm lens: this telephoto lens has a narrow field of view for precise focus and crisp imaging of distant targets.

24°, 17 mm lens: often considered the “standard” lens, the 24° x 18° field of view allows users to remain a safe distance from energized equipment (e.g. 3 m/6.6 ft) while still obtaining a crisp focus on smaller targets.

42°, 10 mm lens: this wide-angle lens captures the largest field of view for imaging buildings, roofs, or other areas where it’s important to gather the most information in a single image.

THE Exx-SERIES and FLIR THERMAL STUDIO PRO

EMPOWERED WITH REPORTING SOLUTIONS TO STREAMLINE INSPECTIONS

Exx-Series cameras are the first FLIR models to come with our exclusive Inspection Route Camera Option automatically enabled in the camera.

Designed for thermographers who regularly inspect large numbers of objects over the course of a day, FLIR Inspection Route guides the user along a pre-defined route of inspection points so they can collect images and data in a structured manner.

The route begins in FLIR Thermal Studio Pro software, where users build their plan using the Route Creator plugin. They can include as many inspection targets as needed and organize them for maximum efficiency. Once they export the completed route to the Exx camera, they’re ready to begin the day.

The predefined route guides the user’s on-site movement to each inspection asset, automatically collecting and organizing saved images for a seamless import into FLIR Thermal Studio Pro. By ensuring that nothing is missed and that all inspection results are organized from start, the suite of FLIR inspection software speeds up inspections, improves organization, and simplifies reporting.





PathFindIR II

See Clearly in Total Darkness

PathFindIR II is a powerful thermal night vision system that lets you see road hazards clearly in total darkness, detecting and alerting you to nearby vehicles, people, and animals.

See Farther Than Ever Before

Headlights usually only let you see about 450' straight ahead, but PathFindIR II sees heat not light, so you can see everything in front of you up to four times farther down the road. Now you can see clearly, night and day, in good weather and bad, without being blinded by the glare of oncoming headlights.

And when you can see farther you have more time to react. More time means more options, smoother driving in emergencies and more room to stop. It's the one thing that can help you avoid traffic accidents. With PathFindIR, you can see pedestrians, cars, animals, and virtually any other hazard from farther away, and as they approach the road from either side.

Benefits of PathFindIR II:

- See in total darkness
- Automatic detection and alerts of Pedestrians and Animals
- See pedestrians and vehicles past the glare of oncoming headlights
- See many hazards over four times farther away than with headlights
- See through dust and smoke
- Have more time to react
- Help avoiding accidents and staying safe



Provix Accessories

Ram Mount



Provix Ram mounts are designed to absorb damaging shock and vibration while being ergonomically friendly for multiple viewing and mounting positions.

Quick Disconnect



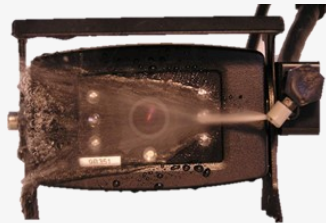
These weatherproof connectors allow for cable route through bulkheads and allows for easy connections for trailer cameras.

Camera Guard



Provides a stable mounting platform and offer rugged impact protection for cameras.

Camera Wash



Cleans the camera of dirt, ice, dust and snow with the push of a button.

Monitor Rock Guard



Provides rugged protection for monitors. Provix supplies waterproof monitors: add the rock guard monitor enclosure for a higher level of protection.

DVR Monitor



Monitor with built in DVR, records to SD Card.

Wireless Option



Enables wireless viewing/eliminate cable routing where line of sight can be maintained between transmitter and receiver.

Provix Vehicle Intercom



- Push to talk unit
- Weatherproof - IP67.
- Epoxy filled for maximum vibration resistance.
- Can be steam & pressure cleaned
- Multi-voltage

The Provix Vehicle intercom is a two way vehicle communication system that allows for communication between the vehicle/equipment operator and workers outside the cab. The system is FULLY waterproof and can be steam and pressure cleaned.

Voltage: 12-24V

Current Draw: 0.4A

Sound Level: 80 - 90 dB(A) @ 1m

Body: AES

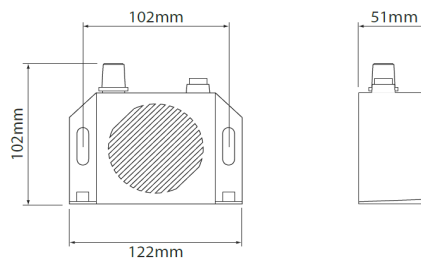
Harness Length: 25m

Weight: Master 0.3Kg Slave 0.27Kg

EMC: CE & 'e' marked

Operating Temp: -40°C to 85°C

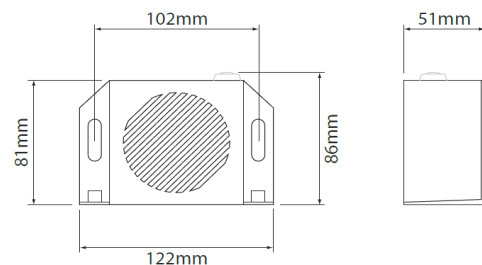
IP Rating: IP67



Cab Unit

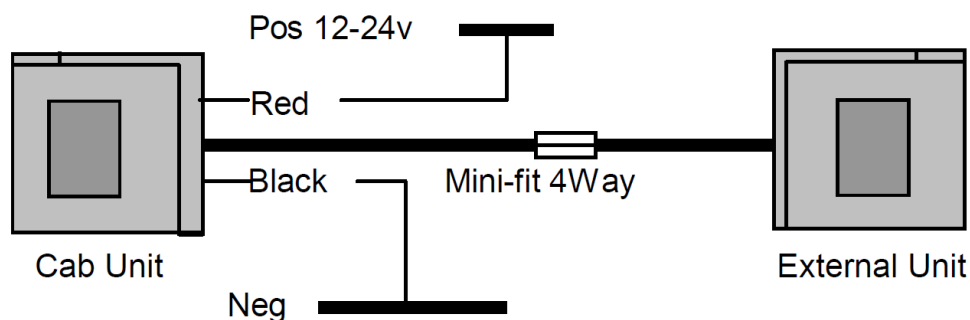


External Unit



Provix Vehicle Intercom

- The Provix Vehicle Intercom comprises of a Cab and External unit, the Cab unit is fitted close to the operator, i.e. in the vehicle cab, the external unit is mounted at a remote position, i.e. externally at the rear of the vehicle.
- To switch on, the Volume-on/off control should be rotated clockwise, the control should be adjusted for a suitable sound level to achieve easy communication.
- To speak to the external unit from the cab unit, the Red pushbutton should be pressed and held in whilst speaking close to cab unit speaker/mic grille. To speak to the cab unit from the external, the Red pushbutton should be pressed and held in whilst speaking close to Slave speaker/mic grille.
- If both intercom buttons are pressed simultaneously, neither unit will transmit or receive.
- The Provix Vehicle Intercom has special circuitry to minimise background noise, however care should be taken to mount units away from machinery and at an appropriate head height, do not obstruct the speaker/mic grille.
- Take care to keep wiring from can and external units away from sources of electrical noise, i.e. ignition, alternators etc. Connect the cab unit as close to the vehicle battery as possible, via a 1A fuse in the Positive line.
- The external unit is connected to the cab unit via a polarised Mini-Fit connector.





Provix Wireless Communication System

Wireless grab & go system that provides clear, **full duplex** group communication for challenging environments.



- CLEAR CONTINUOUS SOUND
- SECURE COMMUNICATION
- INTERFERENCE FREE
- EASY to USE & DEPLOY
- RUGGED CONSTRUCTION
- COMPETITIVELY PRICED
- 5-man group up to 800 ft LINE OF SIGHT
- PORTABLE
- LICENSE FREE
- FCC & IC Approved
- HEADSETS to SUIT your APPLICATION



FEATURES:

Custom configurations & Headset options



System improves **safety, efficiency & productivity** for groups working in challenging environments.

HEADSET OPTIONS



● **DUAL SIDED WATERTIGHT MESH HEAD STRAP HEADSET** with highly sensitive throat mic. Light weight and under helmet or hard hat applications.



● **HEARING PROTECTOR HEADSET** with rear headband, over the head dual straps & noise cancelling boom mic -- electronics in earcup or beltpack version available.



● **SINGLE SIDED LIGHTWEIGHT HEADBAND HEADSET** with Boom Mic - comes with mesh head strap for under helmet wear (throat mic optional)

HEARING PROTECTOR HEADSET Wire-free eliminates the risk of entanglement	CATEGORY	HEADSET + BELTPACK Provides headset options & fast battery change out.
Rechargeable batteries in earcup/detachable charger supplied	BATTERY CHARGER	Comes with 3 Replaceable AA Batteries
10 hours of continuous use	BATTERY LIFE	15+ hours of continuous use
ON/OFF toggle switch earcup mounted	CONTROLS	ON/OFF toggle switch on top of belt pack
Volume control on earcup for receive audio		Volume control for receiving adjustment on belt pack
PAIRING button left earcup mounted		PAIRING button is located inside the belt pack
Power ON/Pairing Indicator LED		Power ON/Pairing Indicator LED
Hearing Protector headband mount with integrated DECT Radio in earcup, One master headset required	HEADSET MODELS	Hearing Protector headband mount Headset
		Single Sided Lightweight Headset
		Single Sided Mesh Head strap with Throat Mic Headset
		Dual sided Watertight Mesh Head strap with throat mic Headset
DECT6 GAP is interference free	RF CLARITY	DECT6 GAP is interference free
Noise Cancelling Water Resistant Boom Mics	MICROPHONE	Choice of Noise Cancelling Boom Mic or Watertight Throat Mic
Full duplex	OPERATIONS	Full duplex
Rechargeable batteries in earcup/detachable charger supplied	POWER SOURCE	3 AA Batteries located in Belt Pack
800 feet line of sight range	RANGE	800 feet line of sight range
24 dB	NRR HEARING PROTECTION	24 dB (headset specific)
Secure Encryption	SECURITY	Secure Encryption
Work group of 2 to 8 users (5+ group requires Cygnus™ LINK A & B)	USER CONFIGURATION	Work group of 2 to 8 users (5+ group requires Cygnus™ LINK A & B)
Low power - < 100 mw	VOLTAGE	Low power - < 100 mw

INTERFACE



● **BELT PACK INTERFACE** -- Houses 3 AA BATTERIES AND VOLUME CONTROL.

LINK



● **LINK BOX** -- PROVIDES ABILITY TO SEPARATE 2 WORK GROUPS OF UP TO 4 WORKERS PER GROUP FOR DISTANCES UP TO 1 MILE.

PROVIX.NET
Now I CAN SEE!

Industrial Grade Cord Reel Station

Get power where you need it!



APPLICATIONS

- Engine block heaters for utility fleets, busses and more.
- Electric pallet jack charging
- Refrigeration vehicle operation
- Electric vehicle charging
- Indoor / outdoor

FEATURES

- Available in a variety of lengths and custom configurations
- Weather resistant system
- Powder coated for durability
- NEMA 4X reels - maximum corrosive resistance
- GFCI protected
- Power indicator light
- Current indicator light
- Fully assembled & delivered to your site
- Lifting hook for easy installation
- 20 Amp rated cord reels

OPTIONS

- Custom configurations
- Breakaway cables
- High amperage panel
- 120V or 240V available
- Power distribution/breaker panel
- Raised foundation/Jersey barrier mounting kit

Durable, tangle free, outdoor
cord management system.

Standard Cord Reel Station Configurations

# of Reels	Pole Height	Pole Configuration	Electrical Box Configuration	Reel - Cord Gauge	Product Payout End
4	6'	4 x 2 (4 reels on 2 tiered elevations)	Load Center w/GFCI (Breaker Panel)	12 AWG	NEMA 5-20R
			Junction Box w/GFCI		
	6'	4 x 1 (4 reels on 1 tiered elevation)	Load Center w/GFCI (Breaker Panel)		
			Junction Box w/GFCI		
	3'	4 x 1 (4 reels on 1 tiered elevation for raised foundation) <i>*Optional Jersey barrier mount kit available</i>	Load Center w/GFCI (Breaker Panel)		
			Junction Box w/GFCI		



Custom built 4 x 2 cord reel station w/optional breakaway cables, load center (breaker panel) box w/GFCI, power & current indicator lights.

3' Cord reel power station mounted with optional Jersey barrier mount kit.



Pallet jack charging

Engine block heaters for utility fleets.



Retractable Cord Reels: **RTB Series**

Commercial and Industrial Grade Retractable Power Cord Reels



FEATURES

NEMA 2 rated - Indoor use

NEMA 4 rated - indoor/outdoor use, including wet locations

- 30 Amp/600 VAC rated slip ring
- Heavy-duty formed steel mounting base: mount to ceiling, floor, or wall
- All steel construction
- Available in yellow, white or black powder-coat finish
- Adjustable ball stop included
- Positive lock ratchet included
- 6' feed cord included
- Made in USA

APPLICATIONS:

Construction
Maintenance/Service
Manufacturing
Vehicle Charging Stations
Retail
Education/Hospitality
Utilities
Medical/Laboratories

OPTIONS

- 2 - 4 Conductors
- 12 - 16 AWG
- SJOW, SOOW, SEOW (black or white cable)
- 25', 35' and 50' standard cord length, custom cord lengths available upon request

ACCESSORIES*

RTB Series Cord Reels are de-rated to NEMA 2 when accessories are added.

GFCI inline with feed cord.

- Options include: outlet boxes, plugs, connectors, or work lights
- Optional Pivot Base rotates up to 345°
- Optional Swivel Base 360° continuous rotation

Specifications

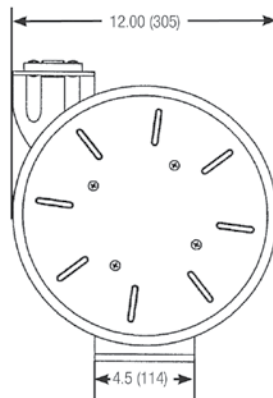
Ask your KH Industries temporary power specialist for a dimensional drawing for complete measurements.

Height: 13.83 in.

Width: 7.75 in.

Depth: 12 in.

Weight: varies based on cord type and length



345° Pivot Base



360° Continuous Swivel Base



Provix... NOW I CAN SEE

TYPES OF LED AND HID LIGHTING

- REMOTE CONTROLLED SEARCHLIGHT
- SPOT
- PORTABLE / BATTERY OPERATED
- GLARE BUSTERS—ANTI GLARE
- FLOOD
- GRILL LIGHTS
- TAIL LIGHTS
- LIGHT BARS
- STROBE LIGHTS
- WARNING LIGHTS
- ROTATING BEACONS
- WARNING LIGHT STICKS / ARROW BOARD

PROVIX.NET
Now I CAN SEE!

LARGE AREA PORTABLE LIGHTING

When the jobsite demands the maximum light output available, PROVIX'S Large Area Lighting is just what is needed. All of these lights offer high-output lighting options and include the durability that you expect from a PROVIX product. From our patented Wobblelight self-righting portable work lights and our Hang-A-Light temporary area work lights, PROVIX has you covered on the ground and overhead.



CALL: 1-888-434-0253 - CONTACT: SALES@PROVIX.NET - VISIT: WWW.PROVIX.NET

PROVIX.NET
Now I CAN SEE!

SMALL AREA PORTABLE LIGHTING

The smaller jobs require portable lighting that is easy to work next to in confined areas, with no hot surfaces but bright enough to get the job done. PROVIX offers several lighting options that meet this criteria while also being energy efficient. Choose from the PROVIX LED Flood Light Series or any of the Defender industrial lighting products for the small jobs. Hang-A-Light offers overhead lighting with those small areas in mind that is cool burning and easy to install. No matter how small or large the area, PROVIX has a light for the job.

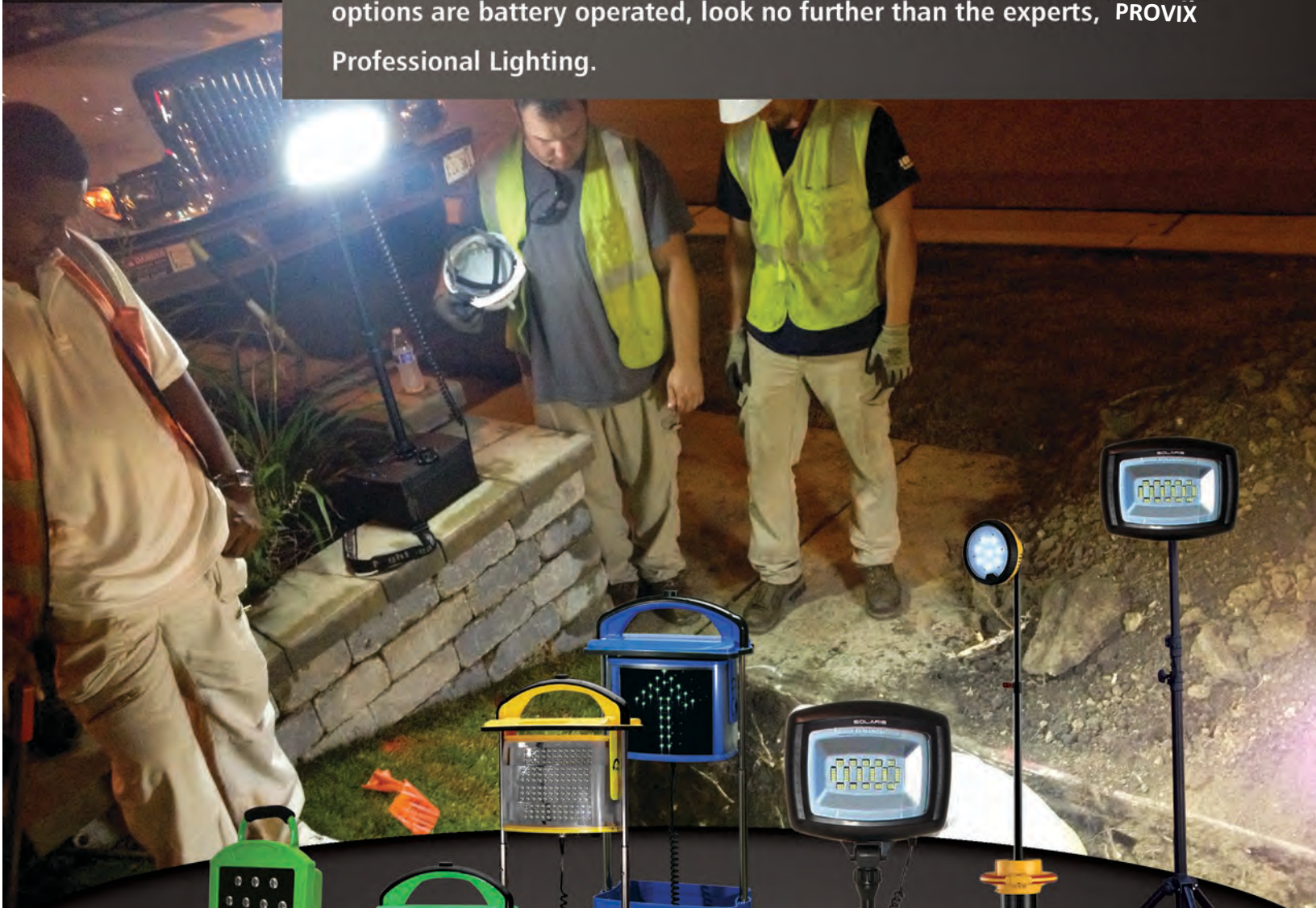


CALL: 1-888-434-0253 - CONTACT: SALES@PROVIX.NET - VISIT: WWW.PROVIX.NET

PROVIX.NET
Now I CAN SEE!

BATTERY OPERATED LED LIGHTING

PROVIX Professional Lighting offers many battery operated LED lighting options. All with superior LEDs that produce a bright white light that is easy to work near and have advanced battery technology that allows for maximum run times. When it is critical to the job that the lighting options are battery operated, look no further than the experts, PROVIX Professional Lighting.



CALL: 1-888-434-0253 - CONTACT: SALES@PROVIX.NET - VIST: WWW.PROVIX.NET

From LED handlamps to high output Torches, PROVIX has a handheld light for your next job! Choose from Defenders rechargeable or replaceable battery operated LED handlamps for those smaller jobs. Or, the PROVIX HID Torches when the job requires military-grade durability and extreme lighting conditions.



PROVIX Professional Lighting realizes that some jobs require a very specialized lighting option and we are committed to bringing that to you. PROVIX' vast network of engineers and manufacturing facilities allows us to customize lighting options for your particular application. Innovation and technology to make your job easier!



PROVIX.NET
Now I Can See!

WARNING LIGHTS AND LIGHT BARS

PROVIX Warning Lights and Light Bars are available in various sizes, colours and models. Adding to the visibility of your work area, PROVIX' lights are perfect for your every need. PROVIX' lighting solutions are ready and able to provide and assist with the safety of your work environment when you need it the most.



CALL: 1-888-434-0253 - CONTACT: SALES@PROVIX.NET - VIST: WWW.PROVIX.NET

No Drill Magnetic Mounting Plate

The Provix magnetic mounting plate offers operators a convenient, sturdy and reliable platform to deploy magnetic mount lights of any type. The plate is installed via the rear cab lights and has a weatherproof seal on the back side for secure and dry installation.

Frame Material: Aluminum

Mounting Plate Material: Stainless Steel

Weight: 8 lbs

Mounting Surface Dimensions: 24" x 8"

Installation: Via Rear Cab Lights

Seal: Weatherproof

Finish: Powder Coated - Black, White, or Grey

Compatible Spotlights: Any Magnetic Mount Light

Ratings/Features:

Durable Construction

Stainless Steel Mounting Plate

Works with Any Magnetic Mount Light

Weatherproof Seal

Compatible Vehicle Brands

Chevrolet, Dodge, Ford, GMC, Nissan, Toyota



Provix Wireless Cap Lamp

PROVIX.NET
Now I CAN SEE!

All in One Multi Purpose Cap Lamp

Explosion-proof, Anti-impact
Fire-resistant, Flame-retardant

NWI-WLAMP3A



Features

Model	NWI-WLAMP3A
Rated capacity	7000 mAh
Rated voltage	3.7 V
Continuous discharging time	13 H(HI) 60 H(LO)
Main light working voltage	3.0 V
Main light working current	80 mA(LO) 570mA(HI)
Main light power	0.24W(LO) 1.71W(HI)
Main light luminous flux	50LM(LO) 265LM(HI)
Lamp lighting degree	1800lx(LO)
(Initial lighting degree in 1 m)	12000lx(HI)
Main light life span	100000 h
Auxiliary light power	0.4 W
Auxiliary light life span	40000 h
Short circuit protection time	< 320 μ s
Life span of the battery	1200 cycles
Charging time	5 h
Dimensions	84 x 69 x 50 mm; 3.3 x 2.7 x 2.0 in
Weight	169 g; 5.96oz



Accessories



NWI-WLOA-HEAD



NWI-PRX-LANYARD



Lens 4

NWI-WLOA-LENSC-C

LED FLARES: A BETTER ALTERNATIVE TO FUSSE FLARES

ELIMINATE
THE RISK POSED
BY FUSSE FLARES

AN ENVIRONMENTALLY SAFE SOLUTION

An eco-friendly solution that eliminates chemical and smoke residue; safer for the environment and your personnel.

ELIMINATE RISK FIRES

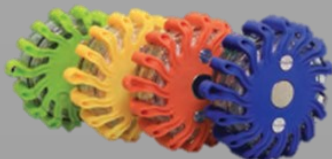
Eliminate dangerous combustible fusee flares that are a risk to vehicles, personnel, and the environment.

IMMEDIATE COST SAVINGS

Self contained led flares last for years. Compared to conventional fusee flares the break even point is after 10 hours of use.

Available in:

Blue, Red, Amber
Blue/Red, White
Green



FEATURES

Rechargeable battery
Hard Case with built in charger
Different Colour LEDs
Environmentally friendly

Stryker® LED



STRYKER LED Remote Control Searchlights

- 10 High Flux LED's
- Wireless or Hardwired Remote Control Options
- Permanent or Portable Mounting Options
- 370° Rotation x 135° Tilt
- 320,000 Candela, Max Beam Distance 3,711 ft
- 2.8 amps at 13.8V
- 8° Beam Angle
- UV Ray and Saltwater Resistant
- Weather Proof for Land and Sea Applications
- Stainless Steel Mounting Brackets for permanent mount units
- 5 Year Limited Warranty

Permanent Mount Models



STRYKER LED
GLI-30004 (White) GLI-30514 (Black)
GLI-30064 (Chrome)

Package Includes:
Wireless Handheld Remote
Stainless Steel Mounting
Bracket



STRYKER LED
GLI-30204 (White) GLI-30214 (Black)
GLI-30264 (Chrome)

Package Includes:
Hard Wired Joystick Dash Mount
Remote Stainless Steel Mounting
Bracket

Portable Mount Models



STRYKER LED
GLI-30005 (White) GLI-30515 (Black)
GLI-30065 (Chrome)

Package Includes:
Wireless Handheld
Remote Attached
Magnetic Base 15' Power
Cord w/ Cig Plug

Stryker LED Accessories



Wireless Hand Held Remote
GLI-30100



Wireless Dash Mount Remote
GLI-30200

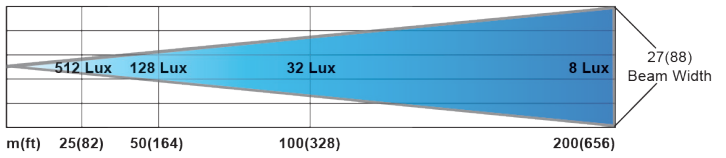


Snap On LED Flood Lens
GLI-15420



Hardwired Joystick Dash
Remote GLI-3020-D

Stryker LED Light Beam Dimensions



Illuminance (Lux) 512 128 32 8

Peak Beam Intensity: 320,000 Candela

Maximum Beam Distance: 1,131 m / 3,711 ft

Beam Angle: 8°



LitFinger® LitLink®

The LitFinger® and LitLink® are the world's first hotstick lights (patent pending). Both products have a built-in, high intensity LED light for safe and efficient operations in dark or low light areas. They connect to any major hotstick with a splined universal slotted connector.

The LitFinger has a machined aluminum pointed head for fuse barrel removal or breaking off ice or debris. The LitLink is extremely versatile and can be used with pigtail disconnects, broken bulb removers, bulb biter, saw, tie head, conductor cleaner brush, etc...



LITLINK FEATURES

- 94 Lumens / 4 Hr.
- Bright, unbreakable 1-watt LED light.
- Light weight aluminum body, only 6.8 oz with batteries.
- Pointed head for breaking off of ice or debris
- HI-LOW switch for increased battery life
- Water resistant battery compartment with sealed silicone rubber push button
- Sealed borosilicate window to resist heat and flash
- Passed 3000 V, 8000 A, 1/2 sec (30 cycles) arc blast test
- Easy access (no tools required) battery compartment door
- Universal splined slotted connector attaches to hot sticks
- Runs on three (3) AAA alkaline or lithium (cold weather use) batteries.
- Waterproof to 1 meter



LITFINGER FEATURES

- 94 Lumens / 4 Hr.
- Bright, unbreakable 1-watt LED light.
- Light weight aluminum body, only 7 oz with batteries
- HI-LOW switch for increased battery life
- Notched straight arm to secure fuse while lowering or raising fuse barrel
- Curved arm for hanging
- Water resistant battery compartment with sealed silicone rubber push button
- Sealed borosilicate window to resist heat and flash
- Passed 3000 V, 8000 A, (10 cycles) arc blast test at 7 inches from the 12 inch arc
- Easy access (no tools required) battery compartment door
- Universal splined slotted connector attaches to hot sticks
- Runs on three (3) AAA alkaline or lithium (cold weather use) batteries
- Waterproof to 1 meter



NightRay Wireless Remote

PROVIX.NET
Now I CAN SEE!

Controlled Spotlight



Key Benefits:

- ✓ Durable polycarbonate exterior resists breakage and is snow, ice, UV, and salt water resistant
- ✓ Base and geared-clutch designed to provide positive tension and resist damage from heavy vibrations
- ✓ Full lamp head rotation: 370° of motion on horizontal axis and 350° vertical tilt
- ✓ Open yolk design allows for trouble-free operation in snow and ice
- ✓ Receiver board included in NightRay models for easy wireless programming
- ✓ Electrical Operation: 12 VDC standard; 24 VDC available
- ✓ 5 year limited warranty

Nightray Wireless Remote Controlled Spotlight

NightRay spotlights with long range remote controller for extended communication. Professional grade vehicle-mounted spotlights made to withstand harsh working environments.



HazRay™ LED Hazardous Location Light **SINGLE**

Lightweight & versatile Class 1, Div 1 & 2 LED lighting solutions



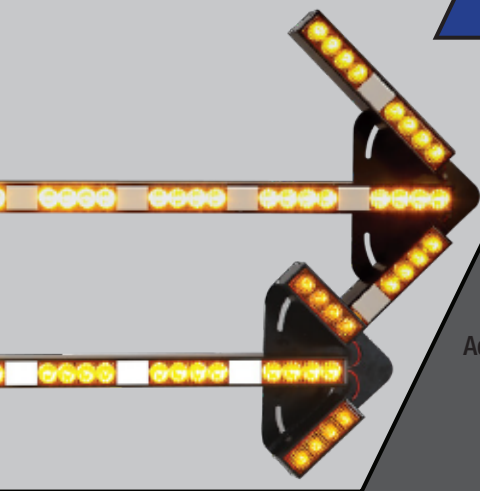
FEATURES

- CSA certified in the US and Canada
- Lightweight body constructed of durable, impact-modified ESD engineered thermoplastic
- LED module constructed with shatter resistant glass lens
- Beam angle: 120° - wide area illumination
- Suitable for wet locations
- NEMA 4X and IP66 rated
- 120 VAC
- Standard Cord Lengths: 25', 50' & 100'
- Standard Cord Gauge: 16 AWG, 14 AWG
- Cord Type: Black SOOW
- Light comes with replaceable, protective diffused lens cover as standard
- Lamp Head Power: 17 Watts
- LED Color: Cool White, 5,000K
- ISO-Lux illuminance graphs available
- Temperature Rating: T5 (0°-40°C)
- Max Ambient Operating Temperature: 40°C
- 1 Year limited warranty
- Made in USA
- HazRay™ patent pending

HazRay™ Single with optional replaceable clear glass lens cover



Image	Model #	Cord Gauge	Cord Length	# of Lamps	Lumens	Feed Cord
	HRD117C-SAAA01-B16F	16	25'	45	1,700	Blunt Cut
	HRD117C-SAAA01-B16K		50'			
	HRD117C-SAAA01-B16U		100'			
	HRD117C-SAAA01-B14F	14	25'			
	HRD117C-SAAA01-B14K		50'			
	HRD117C-SAAA01-B14U		100'			



LED Colour	Flash Patterns	Voltage	Pkg
------------	----------------	---------	-----

Amber 8 Patterns 12V - 24V Box

- 8 Flash Patterns - **SAE J595 Class 1** on 2 Flashes
- Aluminum Housing & Polycarbonate Lens
- Control Box with Lamp Activation & Flash Selection Switch
- 12-3/4 ft Wire from the Light Bar & 10" Wire from the Control Box
- Mounts with "L" or "T" Brackets (Included)

EMC IP65

Accessories

- PRXE-F291-1 Replacement Control Box
- PRXE-F292 Replacement "L" Bracket (sold in pairs)
- PRXE-F293 Replacement "T" Bracket (sold in pairs)
- PRXE-F297 13 ft Extension Wire w/ Connectors
- PRXE-F298 33 ft Extension Wire w/ Connectors



Extension Wires
PRXE-F297 / PXE-F298



PRXE-F291-1 Control Box

41" LED Light Stick Multiple Pattern

Lamp Dimension	LED	Amps
----------------	-----	------

41" L x 2-1/2" D [3" Mounted] x 2" H 32 x 1W 4.1 @ 12V



Part No. **PRXE-2940A**



Part No. **PRXE-2940AC**

45" LED Small Arrow Light Set Multiple Pattern

Lamp Dimension	LED	Amps
----------------	-----	------

45-1/4" L x 2-1/2" D [3" Mounted] x 10" H 48 x 1W 4.7 @ 12V



Part No. **PRXE-2980A**



Part No. **PRXE-2980AC**

45" LED Big Arrow Light Set Multiple Pattern

Lamp Dimension	LED	Amps
----------------	-----	------

45-1/4" L x 2-1/2" D [3" Mounted] x 17-1/2" H 64 x 1W 5.0 @ 12V



Part No. **PRXE-2990A**



Part No. **PRXE-2990AC**

PRXE-2900 Series

Traffic directing made easy with the PRXE-2900 series LED traffic warning light stick and arrow sets. PRXE-2900 series are perfect for use at construction sites, road work and hazardous areas. High power LED diodes ensure greater visibility and increases safety. Made of sturdy aluminum. They are light weight but will not bend. *Foldable arrows for easy storage and transport.*



8"

LED Colour	LED	Flash Patterns	Voltage	Amps	Pkg
Amber	72 x 0.5W	6 Patterns	12V - 36V	0.7 @ 12V	Box

- **SAE J845 Class 1** on 1 Flash
- Lamp Dimensions: 7-7/8" H x 8-5/8" Base Dia.
- Aluminum Base & Polycarbonate Dome

EMC IP65

Mount Type: [Surface Mount with Lead Wires.](#)

Mount Options: [3-1/2" centre](#) or [7" centre.](#)

Accessories

PRXF-S955	<i>Fuse/Switch Kit for PRXE-890A</i>
PRXE-F680	<i>Plate & Bracket Set for Pole Mount or Mirror Arm Mount</i>



SAE Class 1

LED Colour	LED	Flash Patterns	Voltage	Amps	Pkg
Amber	8 x 1W	Quad	12V - 40V	1.3 @ 12V	Box

- **SAE J845 Class 1**
- Lamp Dimensions: 7-7/8" H x 8-5/8" Base Dia.
- Aluminum Base with Polycarbonate Amber Lens & Clear Dome

IP65

Mount Type: [Surface Mount with Lead Wires.](#)

Mount Options: [3-1/2" centre](#) or [7" centre.](#)

Accessories

PRXF-S950	<i>Fuse/Switch Kit for E-888AC</i>
PRXE-F680	<i>Plate & Bracket Set for Pole Mount or Mirror Arm Mount</i>



SAE Class 1

LED Colour	LED	Flash Patterns	Voltage	Amps	Pkg
Amber	4 x 1W	Quint	12V - 40V	0.9 @ 12V	Box

- **SAE J845 Class 2**
- Lamp Dimensions: 7-7/8" H x 8-5/8" Base Dia.
- Aluminum Base with Polycarbonate Amber Lens & Clear Dome

IP65

Mount Type: [Surface Mount with Lead Wires.](#)

Mount Options: [3-1/2" centre](#) or [7" centre.](#)

Accessories

PRXF-S950	<i>Fuse/Switch Kit for E-888AC</i>
PRXE-F680	<i>Plate & Bracket Set for Pole Mount or Mirror Arm Mount</i>



SAE Class 2

6"

LED Colour	LED	Flash Patterns	Voltage	Amps	Pkg
Amber	3 x 1W	Quad	12V - 110V DC	0.3 @ 12V	Box

- **SAE J845 Class 2**
- Lamp Dimensions: 6-1/4" H x 6-5/8" Base Dia.
- Polycarbonate Base & Lens

EMC IPX5 RoHS

Mount Type: **Surface Mount or Pole Mount (1" NPT) with Lead Wires.**
3 mounting holes @ 6" diameter.

Accessories

PRXF-S950	<i>Fuse/Switch Kit for E-661A</i>
PRXE-F680	<i>Plate & Bracket Set for Pole Mount or Mirror Arm Mount</i>
PRXE-FM600	<i>Magnet Mount Kit with Coiled Wire & Cigarette Power Adaptor</i>
PRXE-F560K	<i>Vacuum Suction Mount Kit</i>

PRXE-661A



SAE
Class 2

5"

LED Colour	LED	Flash Patterns	Voltage	Amps	Pkg
Amber	1 x 15W	Rotating	12V - 24V	1.6 @ 12V	Box

- **SAE J845 Class 2**
- Lamp Dimensions: 5-1/4" H x 6-1/2" Base Dia.
- Aluminum Base & Polycarbonate Lens

EMC IP67 RoHS

Mount Type: **Surface Mount with Lead Wires.** 3 mounting holes @ 6" diameter.

Accessories

PRXF-S950	<i>Fuse/Switch Kit for PRXE-655A</i>
PRXE-F680	<i>Plate & Bracket Set for Pole Mount or Mirror Arm Mount</i>
PRXE-FM600	<i>Magnet Mount Kit with Coiled Wire & Cigarette Power Adaptor</i>
PRXE-F560K	<i>Vacuum Suction Mount Kit</i>

PRXE-655A



SAE
Class 2 

LED Colour	LED	Flash Patterns	Voltage	Amps	Pkg
Amber	8 x 2W	Rotating	12V - 40V	0.6 @ 12V	Box

- **SAE J845 Class 2**
- Lamp Dimensions: 5" H x 6-1/2" Base Dia.
- ABS Base & Polycarbonate Lens

IP65

Mount Type: **Surface Mount with Lead Wires.** 3 mounting holes @ 6" diameter.

Accessories

PRXF-S950	<i>Fuse/Switch Kit for E-650A</i>
PRXE-F680	<i>Plate & Bracket Set for Pole Mount or Mirror Arm Mount</i>
PRXE-FM600	<i>Magnet Mount Kit with Coiled Wire & Cigarette Power Adaptor</i>
PRXE-F560K	<i>Vacuum Suction Mount Kit</i>

PRXE-650A



SAE
Class 2 

5"

PRXE-553A



SAE Class 2

LED Colour	LED	Flash Patterns	Voltage	Amps	Pkg
Amber	8 x 1W	Quad	12V - 40V	1.0 @ 12V	Box

- **SAE J845 Class 2**
- Lamp Dimensions: 5" H x 6-1/2" Base Dia.
- ABS Base & Polycarbonate Lens

IP66

Mount Type: **Surface Mount with Lead Wires.**
3 mounting holes @ 6" diameter.

Accessories

- PRXF-S950 *Fuse/Switch Kit for E-553A*
- PRXE-F680 *Plate & Bracket Set for Pole Mount or Mirror Arm Mount*
- PRXE-FM600 *Magnet Mount Kit with Coiled Wire & Cigarette Power Adaptor*
- PRXE-F560K *Vacuum Suction Mount Kit*

PRXE-551A



SAE Class 2

LED Colour	LED	Flash Patterns	Voltage	Amps	Pkg
Amber	3 x 1W	Quad	12V - 110V DC	0.3 @ 12V	Box

- **SAE J845 Class 2**
- Lamp Dimensions: 5" H x 6-5/8" Base Dia.
- Polycarbonate Base & Lens

EMC IP65 RoHS

Mount Type: **Surface Mount or Pole Mount (1" NPT) with Lead Wires.**
3 mounting holes @ 6" diameter.

Accessories

- PRXF-S950 *Fuse/Switch Kit for E-551A*
- PRXE-F680 *Plate & Bracket Set for Pole Mount or Mirror Arm Mount*
- PRXE-FM600 *Magnet Mount Kit with Coiled Wire & Cigarette Power Adaptor*
- PRXE-F560K *Vacuum Suction Mount Kit*

PRXE-250 Series



SAE Class 2

LED Colour	LED	Flash Patterns	Voltage	Amps	Pkg
Amber	3 x 1W	1 Pattern (8-Flash)	12V - 110V DC	0.5 @ 12V	Box

- **SAE J845 Class 2**
- Polycarbonate Base & Lens

EMC IPX7



Part No. **PRXE-250A**
2-Bolt Surface Mount
2 mounting holes @ 3-3/8" centre
5-1/8" H x (2-7/8" x 3-7/8") Base



Part No. **PRXE-250AM**
Magnetic Mount with Cigarette Power Adaptor
5-3/8" H x 2-7/8" Base Dia.

Accessories

- PRXF-S950 *Fuse/Switch Kit for PRXE-250A*

4.5" - 4"

LED Colour	LED	Flash Patterns	Voltage	Amps	Pkg
Amber	8 x 2W	Quad	12V - 40V	1.2 @ 12V	Box

- **SAE J845 Class 1**
- Lamp Dimensions: 4-5/8" H x 5-7/8" Base Dia.
- Rubber Base & Polycarbonate Lens

IP65



Part No. **PRXE-450AD**
Surface Mount
2 Mounting Studs (#8) on 4" diameter



Part No. **PRXE-450ADM**
Magnetic Mount with Cigarette Power Adaptor

PRXE-450 Series



SAE Class 1

Accessories

- PRXF-S950 *Fuse/Switch Kit for PRXE-450AD*
- PRXE-F680 *Plate & Bracket Set for Pole Mount or Mirror Arm Mount*
- PRXE-F560K *Vacuum Suction Mount Kit*

LED Colour	LED	Flash Patterns	Voltage	Amps	Pkg
Amber	8 x 2W	5 Patterns	12V - 50V	1.5 @ 12V	Box

- **SAE J845 Class 1** on Quad Flash
- **SAE J845 Class 2** on Rotating Flash
- Switch (ST109) Included for Flash Pattern Selection
- Lamp Dimensions: 4-1/2" H x 6-1/2" Base Dia.
- Aluminum Base & Polycarbonate Lens

IP65

Mount Type: **Surface Mount with Lead Wires.**
3 mounting holes @ 6" diameter

Accessories

- PRXF-S950 *Fuse/Switch Kit for PRXE-450AD*
- PRXE-F680 *Plate & Bracket Set for Pole Mount or Mirror Arm Mount*
- PRXE-FM600 *Magnet Mount Kit with Coiled Wire & Cigarette Power Adaptor*
- PRXE-F560K *Vacuum Suction Mount Kit*

PRXE-658A



SAE Class 1 

LED Colour	LED	Flash Patterns	Voltage	Amps	Pkg
Amber	30	Rotating	12V	0.1 @ 12V	Box

- Lamp Dimensions: 4" H x 5" Base Dia.
- ABS Base & Polycarbonate Lens

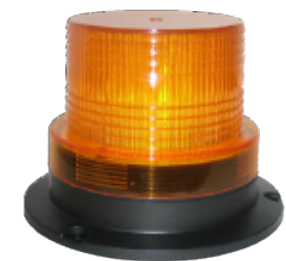
IP66

Mount Type: **Surface Mount with Lead Wires.** 3 mounting holes @ 4-5/8" diameter

Accessories

- PRXF-S950 *Fuse/Switch Kit for PRXE-350A*
- PRXE-F680 *Plate & Bracket Set for Pole Mount or Mirror Arm Mount*
- PRXE-FM600 *Magnet Mount Kit with Coiled Wire & Fused Cigarette Power Adaptor*
- PRXE-F560K *Vacuum Suction Mount Kit*

PRXE-350A





3.75"

PRXE-330 Series



Flash Patterns	Voltage	Amps	Pkg
----------------	---------	------	-----

Quad 12V - 40V 0.2 @ 12V Box

- Lamp Dimensions: 3-3/4" H x 5" Base Dia.
- ABS Base & Polycarbonate Lens

IP66



Part No. **PRXE-330A**
 Colour **Amber**
 LED **3 x 1W**
 Surface Mount with Lead Wires,
 3 Mounting Holes @ 4-3/4" diameter



Part No. **PRXE-330W**
 Colour **White**
 LED **30 diodes**
 Surface Mount with Lead Wires,
 3 Mounting Holes @ 4-3/4" diameter



Part No. **PRXE-330AM**
 Colour **Amber**
 LED **3 x 1W**
 Magnetic Base with Fused Cigarette
 Power Adaptor



Part No. **PRXE-332AM**
 Colour **Amber**
 LED **3 x 1W**
 Magnetic Base with Fused Cigarette
 Power Adaptor, ON/OFF Switch



Part No. **PRXE-330BM**
 Colour **Blue**
 LED **3 x 1W**
 Magnetic Base with Fused Cigarette
 Power Adaptor

Accessories

- PRXF-S950 Fuse/Switch Kit for PRXE-330A & PRXE-330W
- PRXE-F680 Plate & Bracket Set for Pole Mount or Mirror Arm Mount

PRXE-336 Series



**SAE
Class 2**

LED Colour	LED	Flash Patterns	Voltage	Amps	Pkg
------------	-----	----------------	---------	------	-----

Amber 3 x 1W 5 Patterns 12V - 110V DC 0.3 @ 12V Box

- SAE J845 Class 2 on all Flashes
- Lamp Dimensions: 3-3/4" H x 5-1/8" Base Dia.
- Polycarbonate Base & Lens

EMC IP66 RoHS



Part No. **PRXE-336A**
 Surface Mount with Lead Wires
 3 holes @ 4-9/16" diameter



Part No. **PRXE-336AM**
 Magnetic Mount with Cigarette
 Power Adaptor



Accessories

- PRXF-S950 Fuse/Switch Kit for PRXE-336A
- PRXE-F680 Plate & Bracket Set for Pole Mount or Mirror Arm Mount

4" Round Series

Uses regular open or closed back grommets and double contact pigtails. Convenient and easy to install. Lamp kits with grommet, pigtail & mounting bracket available for instant installation. Also available in rubber housing just like a work lamp for permanent mount or magnetic mount.

PRXE-940 Series



SAE
Class 2

LED	Flash Patterns	Voltage	Amps	Pkg
24	Quad	9V - 36V	0.4 @ 12V	Retail Bag

- SAE J595 Class 2
- Lamp Dimensions: 4-1/4" Dia. x 1-3/4" H
- Polycarbonate Body & Lens

EMC IP67

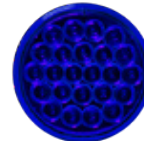
Accessories: PRXF-S950 Fuse/Switch Kit for PRXE-940 Series



Part No. **PRXE-940A**
Colour **Amber**



Part No. **PRXE-940CA**
Colour **Amber**



Part No. **PRXE-940B**
Colour **Blue**



Part No. **PRXE-940R**
Colour **Red**

Lamp Kits with Open Back Grommet & Double Contact Pigtail



Part No. **PRXE-940A-K**
Colour **Amber**



Part No. **PRXE-940CA-K**
Colour **Amber**



Part No. **PRXE-940B-K**
Colour **Blue**



Part No. **PRXE-940R-K**
Colour **Red**

Lamp Kits with Black Steel Mounting Bracket, Open Back Grommet & Double Contact Pigtail



Part No. **PRXE-940A-KM**
Colour **Amber**



Part No. **PRXE-940CA-KM**
Colour **Amber**



Part No. **PRXE-940B-KM**
Colour **Blue**



Part No. **PRXE-940R-KM**
Colour **Red**

Rubber Assembly



Part No. **PRXE-940A**
Colour **Amber**



Part No. **PRXE-940CA**
Colour **Amber**



Part No. **PRXE-940B**
Colour **Blue**



Part No. **PRXE-940R**
Colour **Red**



Part No. **PRX-EHM-940A**
Colour **Amber**



Part No. **PRX-EHM-940CA**
Colour **Amber**



Part No. **PRX-EHM-940B**
Colour **Blue**



Part No. **PRX-EHM-940R**
Colour **Red**

PRXE-920 & PRXE-921 are the same dimensions as an oval tail lamp. Uses regular open or closed back grommets and double contact pigtailed. Convenient and easy to install. Lamp kits with grommet, pigtail & mounting bracket available for instant installation.

6.5" Oval Series

LED	Flash Patterns	Voltage	Amps	Pkg
24	Quad	9V - 36V	0.4 @ 12V	Retail Bag

- SAE J595 Class 2
- Lamp Dimensions: 6-1/2" L x 2-1/4" W x 1-3/4" H
- Polycarbonate Body & Lens

EMC IP67

Accessories: PRXF-S950 Fuse/Switch Kit for PRXE-920 Series

PRXE-920 Series



Part No. **PRXE-920A**
Colour **Amber**



Part No. **PRXE-920CA**
Colour **Amber**



Part No. **PRXE-920B**
Colour **Blue**



Part No. **PRXE-920R**
Colour **Red**



SAE Class 2

Lamp Kits with Open Back Grommet & Double Contact Pigtail



Part No. **PRXE-920A-K**
Colour **Amber**



Part No. **PRXE-920CA-K**
Colour **Amber**



Part No. **PRXE-920B-K**
Colour **Blue**



Part No. **PRXE-920R-K**
Colour **Red**

Lamp Kits with Black Steel Mounting Bracket, Open Back Grommet & Double Contact Pigtail



Part No. **PRXE-920A-KM**
Colour **Amber**



Part No. **PRXE-920CA-KM**
Colour **Amber**



Part No. **PRXE-920B-KM**
Colour **Blue**



Part No. **PRXE-920R-KM**
Colour **Red**

LED Colour	LED	Flash Patterns	Voltage	Amps	Pkg
Amber	35	Sequential Arrows	9V - 36V	0.4 @ 12V	Retail Bag

- Lamp Dimensions: 6-1/2" L x 2-1/4" W x 2" H
- Polycarbonate Body & Lens
- Sequential Flash Fills Lamp & Repeats

IP67

Accessories: PRXF-S950 Fuse/Switch Kit for PRXE-921A

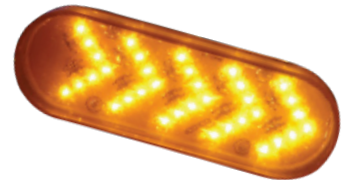
PRXE-921A



Part No. **PRXE-921A-K**
Kit with Grommet & Pigtail



Part No. **PRXE-921A-KM**
Kit with Mounting Bracket,
Grommet & Pigtail





DETECT - ALERT - REACT with PROVIX!

PROVIX is a leading supplier of Proximity Detection and Collision Avoidance systems that increase safety, prevent accidents and increase productivity.

PROVIX Proximity detection systems and Equipment Blind Spot Cameras serve to enhance safety by increasing operators' situational awareness of surrounding vehicles and personnel.

PROVIX supplies Backsense object detection that utilises Radar technology to alert vehicle and equipment operators of the presence of any object within the desired detection zone of a vehicle.

PROVIX supplies Self-adjusting, broadband/ white noise reversing alarms that are safer for workers. These intelligent back up alarms reduce noise complaints and eliminate worker acclimatization associated with conventional tonal alarms as they are only heard within the danger area of the reversing vehicle.

PROVIX Safety systems keep workers safe and reduce equipment damage costs.

Contact your PROVIX tech rep to discuss how to best protect your personnel and equipment.

Proactive Combination Safety System

DETECT, ALERT, REACT *Before accidents can occur*

- ◆ Provides driver with audible and visual in-cab warning
- ◆ Integrates powerful object detection radar with safety cameras to notify drivers of surrounding objects
- ◆ Robust Radar detects objects even when the camera view is hindered
- ◆ Broadband alarm notifies people around vehicle
- ◆ Enhances Safety all around the vehicle!



1) Equipment Cameras

2) Proximity Detection

3) Broadband White noise-
Back-up Alarm

Provox integrates the consistency of our Radar Sensors with the quality of our cameras to provide drivers with a comprehensive object detection solution that meets the rugged conditions common in the heavy equipment industry.

1



Equipment Cameras

Visual Warning

1 for reversing

- add up to 3 more

2



Proximity Detection

Detect and Alert with
Audible Warning

3



Broadband Back-up Alarm

Alert people around vehicle

Provix Radar Detection System

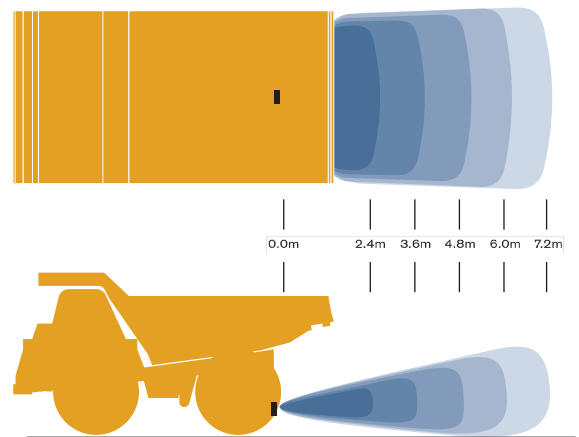
PROVIX.NET
Now I CAN SEE!



Features:

- Close detection zone combined with targeted beam pattern
- Controlled beam pattern to minimise false warnings
- Excellent close-in detection
- Frequency modulated continuous wave radar technology
- Can trigger other vehicle safety devices such as camera monitor systems or reversing alarms
- Eliminates possibility of driver interference. The audible warning buzzer cannot be switched off, providing fleet operators with peace of mind
- Clear, easy-to-read display and wide volume range of audible alert
- Suitable for both on- and off-road applications
- Extremely rugged design for severe weather conditions and all terrains
- Effective through non-metallic objects - can fit behind plastic or glass fibre body work
- Self-diagnostics alert operator to system errors
- Choice of detection ranges
- 5 stage audible and visual display
- Comprehensive certification

Every System has an in-cab audio alert and LED display to alert the operator to hazards and their proximity.





Eliminate Noise Complaints NOW!

Increase Worker Safety

Keep Your Neighbors Happy!



BROADBAND WHITE SOUND BACK-UP ALARMS

INTRODUCING THE SMART, SELF-ADJUSTING BBS-TEK® BACK-UP ALARMS

WITH VOLUME RANGES FROM 77-97DB(A) AND 87-107DB(A)



MAKING THEM IDEAL FOR TRUCKS, BUSES, COACHES, FORKLIFTS, AIRPORT VEHICLES,

CONSTRUCTION & MINING MACHINERY, AS WELL AS WORKING IN AREAS WHERE THE AMBIENT NOISE LEVEL MAY VARY SIGNIFICANTLY.



77-97db



87-107db

PROVIDES GREATER SAFETY & LESS NOISE NUISANCE THAN ANY OTHER ALARM!

KEY BENEFITS:

- 'Smart' self-adjusting sound level
- Ambient noise is monitored once every second
- Automatically adjusts the alarm volume 5-10dB above the sampled noise level
- Sound is instantly locatable so you can tell which vehicle is reversing
- Focuses warning sound in the danger zone behind the vehicle, so it doesn't annoy site neighbors or other people
- Unlike conventional alarms, the 'shh... shh...' sound of broadband sound (white sound) is easy on the ear and dissipates fast outside the danger area
- Tough, Durable, Waterproof (IP68)
- Conforms to SAE J994 environmental standards
- Solid state, spark-free electronics
- Epoxy sealed for protection against vibration, dust and moisture

*This is particularly important for vehicles maneuvering in close proximity to each

other or going from a noisy environment, such as a factory floor, to a quieter external

location, such as a work yard, ensuring the warning is always heard.



<u>SPECIFICATION:</u>	<u>97:</u>	<u>107:</u>
POWER INPUT	12-24Vdc	12-24Vdc
POWER CONSUMPTION	0.5	1.0
SOUND LEVEL (DB(A)@1M)	77-97	87-107
SOUNDER UNIT	Speaker	Speaker
FREQUENCY	Multi	Multi
DIMENSIONS (IN.)	5 x 2.5 x 3.6	7 x 3.7 x 3.1

CALL TOLL FREE: 1-888-434-0253 — CONTACT: SALES@PROVIX.NET — VISIT: WWW.PROVIX.NET

Provix Broadband Alarms– The Benefits

SAFETY – Much Greater Safety

- **Their sound is locatable**
The location of a broadband sound source is instantly and unambiguously recognisable and reveals immediately which vehicle or machine is backing-up. Narrowband sound is liable to give false directional clues due to reflection off surfaces such as buildings, quarry faces etc. sometimes with fatal results
- **Sound is localised within hazard area**
Familiarity with unneeded warning alarms heard *outside* the hazard area breeds general contempt for them – very dangerous when real need is.
- **Audible through Ear Defenders**
The lower frequencies of their broad frequency spectrum penetrate ear defenders more readily than the higher frequencies of narrowband alarms
- **End to intentional disconnects**
Operators and site workers, driven mad by old narrowband alarms, are very happy to work with broadband and appreciate its safety value

ENVIRONMENT – End To Noise Complaints

- **Rapid Sound Dissipation**
Broadband sound dissipates much faster than narrowband. This results in its warning sound being confined to the hazard area.
- **Less Irritating**
Psychoacoustically, broadband sound is tolerable whereas pulsed narrowband sound disturbs and irritate workers and householders far from the hazard area.
- **Less decibels**
Broadband sound is *equally audible at lower Sound Pressure Levels* than narrowband.

HEALTH – Reduce Hearing Damage & “Startle”

- **Reduced risk of Hearing Damage**
Lower sound-pressure levels spread across a broad frequency-band diminish the hearing-damage hazard of high narrowband frequencies (the stiletto heel effect)
- **Heart risk due to “startle”**
Sudden burst of loud narrowband sound nearby can cause severe heart stress due to the “startle” factor

NOISE - The 21ST Century Pollutant

”Calling noise a nuisance is like calling smog an inconvenience”,

Dr William H. Stewart, former Surgeon General of USA

“Noise is any loud, discordant or disagreeable sound or sounds”

Webster’s New Woropld Dictionary

Broadband back-up alarms are “noiseless” – their sound is neither loud, discordant nor disagreeable. Traditional, old narrowband alarms are intrinsically unsafe, noisy, irritating, disagreeable, injurious to health, cause stress and are frequently sabotaged. They are now obsolete.

PROVIX.NET
Now I CAN SEE!

CALL TOLL FREE: 1-888-434-0253

CONTACT: SALES@PROVIX.NET

VISIT: WWW.PROVIX.NET

ISO 9001: 2015 Certified