

PROVIX.NET
Now I CAN SEE!

PROVIX IN YOUR OPERATION?

Safety and Remote Video Systems for Mining Operations.



Vehicle Mounted Thermal Imaging and Gas Detection System



Options/ Add On's:



Remote Access



Wi-Fi Modem

Lighting



Detectable Gasses

Carbon Monoxide CO

Methane CH4

Hydrogen H2

Hydrogen Sulfide H2S

Nitrogen Dioxide NO2

Carbon Dioxide CO2

Oxygen O2

Chlorine CL2

Ammonia NH3

Ozone O3

Nitric Oxide NO

Propane C3H8

Hydrogen Cyanide HCN

Hydrogen Chloride HCL

VOC

Sulfur Dioxide SO2

Technical Specifications

SENSORS

- 2
- 2
- 4
- 2

ALARMS

-
-
-

COMMUNICATION INTERFACES

-
-

MENU & DISPLAY

-
-
-
-
-
-
-

USER INTERFACE

-
-

INPUT POWER OPTIONS

-
-

POWER CONSUMPTION

-
-

TEMPERATURE & HUMIDITY RANGE

-

CONFIGURATION

-
-

APPROVALS

-
-
-
-
-

IO CAPABILITIES

-
-

WIRELESS FEATURES

-
-
-
-
-

WARRANTY

-



PTZ THERMAL CAMERA



Part # PRX-70WPQ-110HTX4

PROVIX.NET
Now I CAN SEE!



Mining Quad Camera System

- Enables a 360° view around vehicle
- Perfect for LHD's, Scoops, Haul Trucks, and more
- Quad monitor allows for display of all cameras simultaneously or individually





Haul Truck Dual Camera System

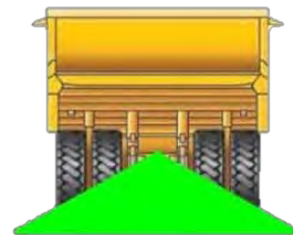
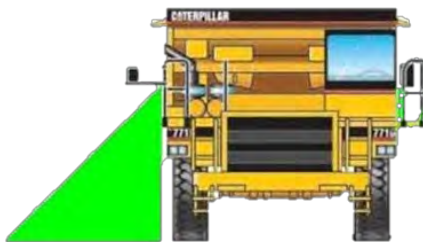


- One Reversing Camera with steel camera guard
- One Blind side Camera to enhance the operators vision on the blind side of the vehicle.
- Both rugged, heated cameras are reverse triggered shown split screen on a quad monitor

Waterproof Monitor



Two Heated Cameras in Steel Guards



Eliminates Blind Spots Behind and Beside Haul Trucks

CALL TOLL FREE: 1-888-434-0253 — CONTACT: SALES@PROVIX.NET — VISIT: WWW.PROVIX.NET

Mining Camera System

R v R



System Includes:

- One Reversing Camera with steel camera guard
- Rugged, heated camera shown on a waterproof/dustproof monitor when vehicle is put into reverse.



Heated Camera



Waterproof Monitor

Additional Options



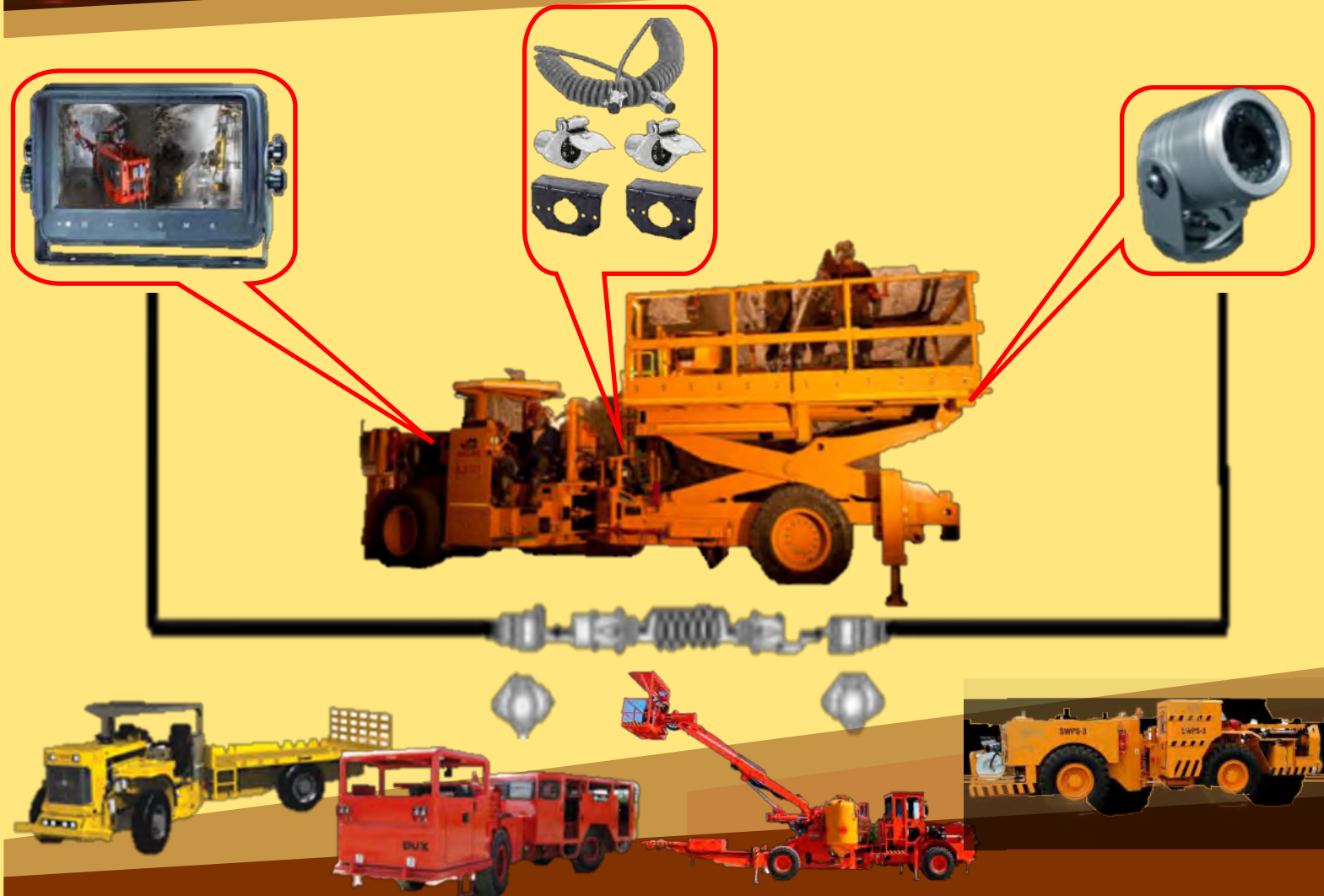
- Wireless camera transmits real time video to the monitor in the truck as well as to control room operator of the loading station.

PROVIX.NET

- Uses washer fluid for year round operation
- Easy to install
- 12 Volt High Pressure Pump
- 1 Gallon Reservoir with Mounting hardware
- Momentary Rocker Switch



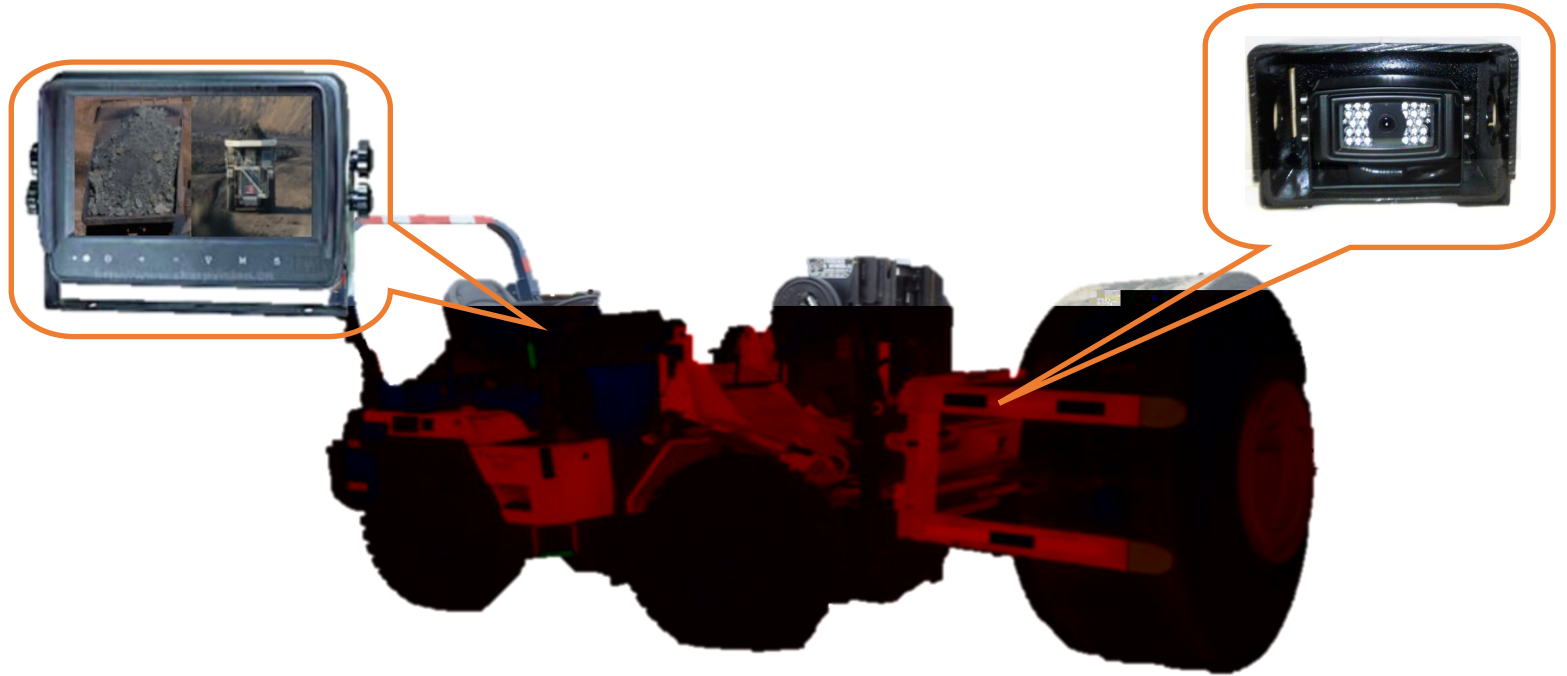
Cassette Camera System with Quick Disconnect



Available for any application

- Enables the operator to see properly when reversing, providing the driver with a view of the area that is in proximity to the basket and boom.
- Accurate depth perception that enables the positioning of the basket to be adjacent to the desired work area.
- Protects the boom and basket from being damaged.
- Quick disconnect cable allows for simple switching of cassettes
- Universal truck side monitor mates with any cassette camera system
- Add up to 4 cameras
- 60' extendable cable for boom
- See the safety personnel while reversing

Tire Manipulator Camera System



PROVIX Tire Manipulator Camera System allows operator to align and fit tires accurately without damaging the tire/studs/valve and eliminates the need for a fitter between the Tire Handlers' arms.

System includes:

- Heated waterproof camera equipped with LED infrared lighting
- Waterproof and dustproof monitor
- Rugged Camera Guard

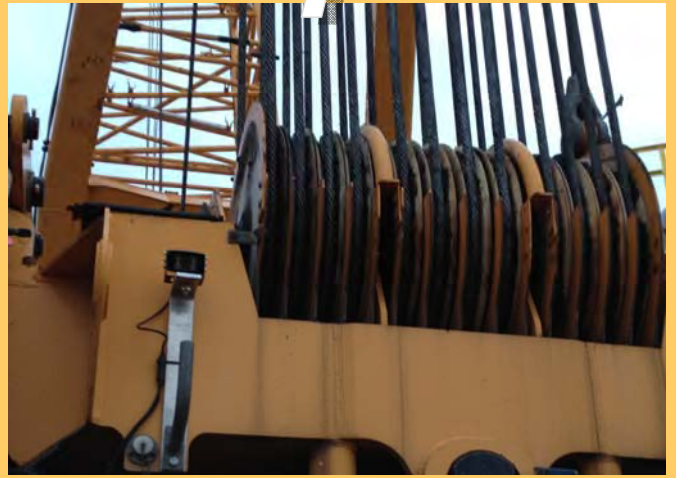
Additional Options:

Add up to as many cameras as needed



PROVIX.NET
NOW I CAN SEE!

Crane Camera System



- Vision Enhancement
- Increased Productivity
- Overhead Safety
- Less Material Damage



CALL TOLL FREE: 1-888-434-0253 — CONTACT: SALES@PROVIX.NET — VISIT: WWW.PROVIX.NET



Feller Buncher GPS Harvest Tracking Camera System



PROVIX.NET
Now I CAN SEE!

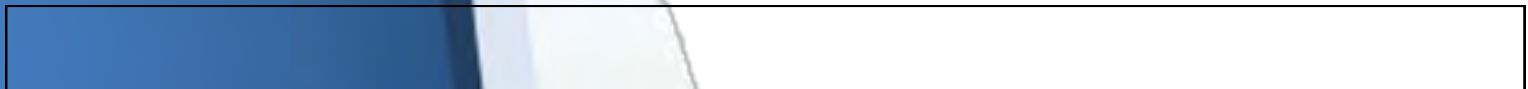
“FORKVIEW” WIRELESS CAMERA SYSTEM

-
-
-
-
-
-
-



“ ”

w/ PACK



PORTABLE REMOTE VIDEO SYSTEM



Industry Canada and FCC Certified Wireless Video System for Remote Operation

- Two Fixed Wireless Equipment mounted cameras on Detachable Pedestal mounts.
- 75m cabled receiver range extender provides non line of sight viewing.
- 15" Metal Monitor in Pelican style case with camera control and battery.
- 24v machine connections or Lithium Ion battery packs for cameras.
- Optional Wireless PTZ (Pan/Tilt/Zoom) Camera can be used for stope/brow Inspection or can be deployed on Equipment, Tripod, or back allowing for Birdseye view.
- Remote Mucking Wireless Video system can provide both overhead and operator point of view.



PTZ Rugged Robotic Camera For Bolting Operations



Display Options:

- Network/IP Viewable at surface
- Tethered Remote Viewing at Safe Operator Station
- In Cab monitors for manned operation
- Vibration Resistant
- Waterproof
- 360°/ 300° Pan and Tilt
- 26x Zoom



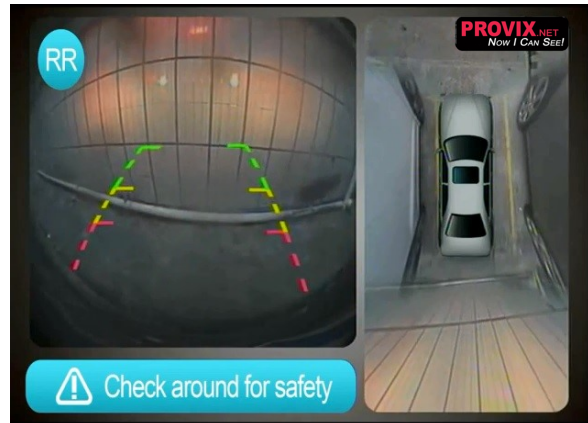
Two PTZ Cameras in operation on a remotely operated Bolter at Diavik Diamond Mines



***Operator Uses Bolter Cameras Displayed on Three Monitors to Remote Control Bolting, Drilling and Screening Operations.**

Applications

The PTZ Camera is a shock-proof high speed camera with integrated pan, tilt and 26x optical zoom. The reinforced metal camera housing is literally bullet proof and has been constructed to be resistant to flying rocks and debris. This camera has been designed for mining, construction, petroleum processing and oil field applications: It is well suited for hazardous environments and its functionality makes it ideal for vehicle and equipment mounting for remote operation, process monitoring and surveillance.



- Split Screen view captures both Aerial view of vehicle and camera display from direction of travel.
- Camera views are triggered automatically by vehicle direction of travel.
- 180° Camera lens eliminates blind spots
- Split Screen Viewing eliminates Screen clutter and offers rapid identification of obstacles or people.
- An aerial, front, side, and rear view of a vehicle equipped with the 360° Panoramic camera system