

PROVIX.NET
Now I CAN SEE!

Camera Systems for Mobile Equipment



PROVIX.NET
Now I CAN SEE!

PROVIX IN YOUR OPERATION?

Safety and Remote Video Systems for Mining Operations.



Mining Camera System

Part # SHv-70M3AVWPHT20MRG



System Includes:

- One Reversing Camera with steel camera guard
- Rugged, heated camera shown on a waterproof/dustproof monitor when vehicle is put into reverse.



Heated Camera



Waterproof Monitor

Additional Options

Wireless Loading Chute Camera

Part # RMG-HS7131TX9-120

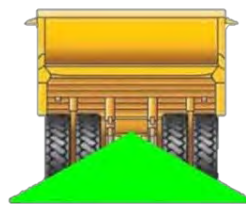
- Wireless camera transmits real time video to the monitor in the truck as well as to control room operator of the loading station.



Camera Wash System

Part # PRX-EWASH-086

- Uses washer fluid for year round operation
- Easy to install
- 12 Volt High Pressure Pump
- 1 Gallon Reservoir with Mounting hardware
- Momentary Rocker Switch



Haul Truck Dual Camera System

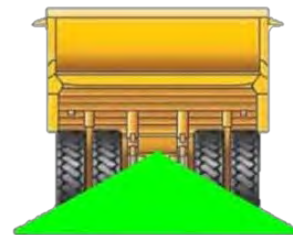
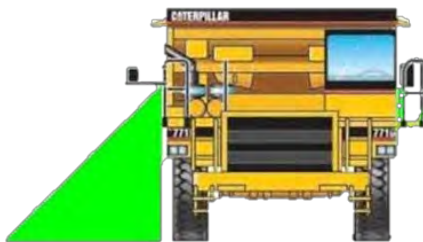


- One Reversing Camera with steel camera guard
- One Blind side Camera to enhance the operators vision on the blind side of the vehicle.
- Both rugged, heated cameras are reverse triggered shown split screen on a quad monitor

Waterproof Monitor



Two Heated Cameras in Steel Guards



Eliminates Blind Spots Behind and Beside Haul Trucks

Cassette Camera System with Quick Disconnect



Available for any application

- Enables the operator to see properly when reversing, providing the driver with a view of the area that is in proximity to the basket and boom.
- Accurate depth perception that enables the positioning of the basket to be adjacent to the desired work area.
- Protects the boom and basket from being damaged.
- Quick disconnect cable allows for simple switching of cassettes
- Universal truck side monitor mates with any cassette camera system
- Add up to 4 cameras
- 60' extendable cable for boom
- See the safety personnel while reversing

Tire Manipulator Camera System



PROVIX Tire Manipulator Camera System allows operator to align and fit tires accurately without damaging the tire/studs/valve and eliminates the need for a fitter between the Tire Handlers' arms.

System includes:

- Heated waterproof camera equipped with LED infrared lighting
- Waterproof and dustproof monitor
- Rugged Camera Guard

Additional Options:

Add up to as many cameras as needed



Excavator Camera System



7" Digital Screen TFT LCD
Color Quad Monitor with
Removable Sun Visor



Heavy Duty
Industrial
Boom/Stick
Camera



Heated Rear view
Counterweight Camera with
steel camera guard

- System is designed to eliminate blind spots, increase safety and improve productivity for the excavator operator.
- Reversing camera to enhance operators view of swing area
- Boom camera to view the operation of the excavator attachment; boring, ripping, crushing, cutting, lifting, etc.

Optional: Vibration mount

Rail Excavator Camera System



PROVIX provides camera systems for multi-purpose railcar movers, specialized in on-track cranes and road tools.

PROVIX supplies top quality, industry leading camera systems for a variety of material handling and rail equipment for the rail industry.

Benefits:

- Increases Speed and Productivity of Railway Maintenance Services
- Increases Speed and Distribution of Rail Ties and Tie Plates
- Cameras are Applicable for ALL Rail Equipment Services



7" Digital Screen TFT LCD Color Quad Monitor with Removable Sun Visor

Boom Camera with Photo-Chromatic Lens gives your camera it's own set of sunglasses



Heated Rear view Counterweight Camera with steel camera guard

Skid Steer Camera System



Heavy Equipment Camera System

PART NUMBER:SHV-70M3AV-HT



WITH DISTANCE GRID LINES

7" TFT- LCD color monitor with digital screen

Product: 7" TFT- LCD color monitor digital screen

Audio output: 1W.

Loudspeaker: one 15x24mm round loudspeaker.

Power supply: Automobile storage battery (10-32V).

Power consumption: about 6W .

Outer dimension: 1946.6mm (W) x 128mm (H) x 39.3mm (T)

Dot pitch: 0.192 (H) x 0.1805 (V).

Resolution: 800x3 (RGB) x 480.

Contrast: 500:1.

Brightness: 400 cd/ m².

Viewing angle: U: 50° / D: 60°, R/L: 70° /70°

Operating temperature: -20°C—+70°C, RH90%.

Storage temperature: -30°C—+80°C, RH90%

15 G-force rated shock resistant for the monitor



INTERNAL HEATER

1/3" COLOR CCD SENSOR SPECIFICATIONS

With Audio and IR

Image Device: SHARP

TV System: PAL/NTSC

Effective Pixels: 512x582 pixels / 512x492 pixels

Scanning System:2:1 Interlace

Resolution: 420TV lines

Minimum Illumination: 0 Lux/F1.2 with IR

Microphone: Included

Video Output: 1.0vp-p, 750hm

S/N Ratio: Better than 48dB

Current Consumption: Max. 300mA

Operating Temperature: -30°C-70°C, RH95% MAX

Storage Temperature: -40°C-80°C, RH95% MAX

Lens: f=3.6mm / 2.8mm F=2.0

Lens Angle 120°

15G-force rated shock resistant for the camera



CALL TOLL FREE: 1-888-434-0253 — CONTACT: SALES@PROVIX.NET — VISIT: WWW.PROVIX.NET

PROVIX.NET
Now I CAN SEE!

Crane Camera System



- Vision Enhancement
- Increased Productivity
- Overhead Safety
- Less Material Damage



CALL TOLL FREE: 1-888-434-0253 — CONTACT: SALES@PROVIX.NET — VISIT: WWW.PROVIX.NET

PROVIX.NET
Now I CAN SEE!

“FORKVIEW” WIRELESS CAMERA SYSTEM

Wireless Mast Cam:

- Allows Operator to see in front of the forks and eliminate load damage
- Powered by interchangeable 3AH Li-Ion battery packs [runs for an 8 hour shift]

Optional :

- Rear View Cam:
- Allows Operator to reverse safely and more efficiently
- Camera guards
- Waterproof monitor
- Broadband backup alarms

Wireless “ForkView” Camera w/ Battery PACK



7 Inch Monitor Display



Wireless Mast Cam





Feller Buncher GPS Harvest Tracking Camera System

PRX-FOHV-10GPS90WP



(Waterproof GPS Camera Monitor with 10" Display , High Endurance Camera, Cables, Camera Guard)
* Note: The camera is enclosed in a supplied rigid steel camera guard that would be welded onto the buncher arm. This would protect the camera from falling branches & debris.



Key Features:

GARMIN® GPS:

- ⇒ Features a worldwide base map with high-quality satellite-enhanced images
 - * Ability to record waypoints on Canadian topographical maps
- ⇒ Draws maps quickly, simple interface makes navigating easy
- ⇒ Waterproof 10" Monitor: view high-resolution video/graphics
 - * High-resolution satellite images and aerial photographs help you orient yourself in unfamiliar areas
- ⇒ Removable SD card for recording tracks & transferring mapping data to a compatible Garmin® GPS— installed in skidder
- ⇒ Can connect live video feed with the video input/output options
- ⇒ By connecting to the Garmin® Marine Network, sonar & radar can be added

CAMERA:

- ⇒ Solid billeted aluminum camera body; anodized camera body resists corrosion
- ⇒ Automatic IR night vision gives 45'+ of viewing in complete darkness
- ⇒ Standard lens features 92 degree field of view (3.6MM) Optional lenses available include: 4.3MM, 6MM, 12MM or 16MM
- ⇒ Waterproof to 300' depth: Triple O-ring sealed
- ⇒ Lab certified to 100G shock & vibration
- ⇒ Photo chromatic lens gives camera it's own set of sunglasses
- ⇒ Triple hardened glass lens resist scratch, scuffing & static buildup
- ⇒ System includes one camera— additional cameras can be added as required.
- ⇒ 3 Year Warranty on Camera

PROVIX.NET
Now I CAN SEE!



HEATED WATERPROOF CAMERA (IP69)



Snowplow Camera System

CALL TOLL FREE: 1-888-434-0253 — CONTACT: SALES@PROVIX.NET — VISIT: WWW.PROVIX.NET

PROVIX.NET
Now I CAN SEE!



Camera Specifications:

- Waterproof IP69
- Image Device: SHARP
- TV System: PAL / NTSC
- Effective Pixels: 512 x 582 Pixels / 512 x 492 Pixels
- Sensing Area: 4.9mm x 3.7mm
- Scanning System: 2:1Interlace
- Sync. System: Internal
- Resolution: 420TV lines
- Horizontal Sync.: 15.625KHz / 15.734KHz
- Vertical Sync. Frequency: 50Hz / 60Hz
- Minimum Illumination: 0 Lux/F1.2 with IR
- Microphone: Built in Condenser Mic
- Operating temperature: -30°C—+ 75°C
- Video Output: 1.0vp-p, 75Ohm
- Gamma Consumption: 0.45
- AGC: Auto
- S/N Ratio: Better than 48dB
- White Balance: Auto
- Electronic Shutter: 1/60~1/10,000 Seconds
- Vibration 5.0G
- Internal Heater activates at 4°C
- View Angle: 110°C
- Includes 20m Cable and Mounting Bracket

Monitor Specifications:

- 7" Digital Screen TFT LCD Monitor
- Color System: PAL/NTSC (AUTO)
- Display Resolution: 2400(H) X 480(V) dot
- Wide view angle(CR>10):(up/ down): 45/65 (left/right): 65/65
- Brightness (cd/m2): 400 (Automatic)
- Contrast ratio: 500:1
- Back-light: Single LED
- Operating temperature: -25°C to +70°C
- Storage temperature: -30°C to +80°C
- Free Operating Voltage: DC8-32V
- 4-Pin Mini Jack (1)NC (2) Green: Reverse Gear Input (3) DC 12 Volt, 0.2A DC (output) (4) Ground
- External dimensions: L*W*T(185X124X48) mm
- Weight Approx.: 379g
- Vibration 5.0G

Product Accessories:

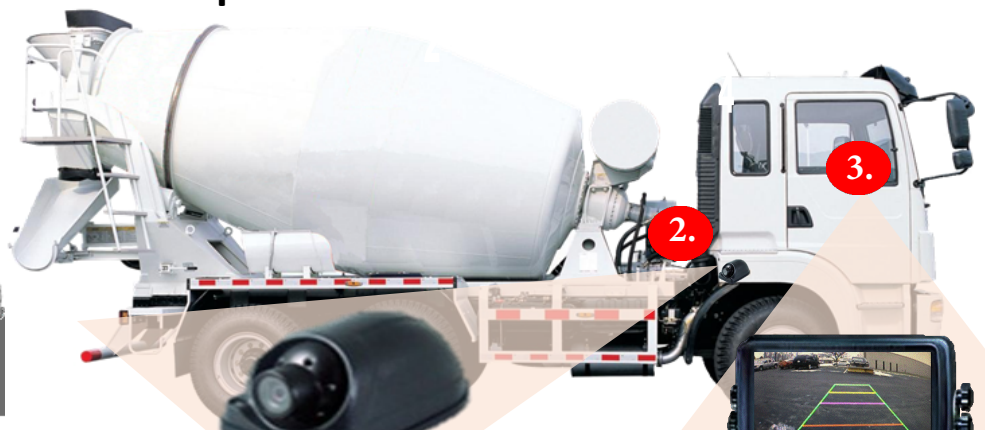
- Monitor bracket
- Electrical connecting cable solution
- Auto cigarette lighter.



CALL TOLL FREE: 1-888-434-0253 — CONTACT: SALES@PROVIX.NET — VISIT: WWW.PROVIX.NET

Redi-Mix Camera System

Eliminate Blind Spots - Beside and Behind Your Vehicle!



2. Side Camera

Image Device: SHARP
TV System: PAL/ NTSC
Effective Pixels: 512 x 582 pixels / 512 x 492 pixels
IP69 Waterproof Camera
Sensing Area: 4.9mm x 3.7mm
Scanning System: 2:1 Interlace
Sync. System: Internal
Resolution: 420TV lines
Horizontal Sync. Frequency: 15.625KHz / 15.734KHz
Vertical Sync. Frequency: 50Hz / 60Hz
Minimum Illumination: 0Lux (Infrared lamps on) 0.1Lux(day) / F1.2 Video Output: 1.0vp-p, 75Ohm
Gamma Consumption: 0.45
AGC: Auto
S/N Ratio: Better than 48dB
White Balance: Auto
Electronic Shutter: 1/60(NTSC) / 1/50(PAL) ~ 1/10,000 Seconds BLC: Auto
Current Consumption: Max. 150mA
Power Supply: DC12V
Operating Temperature: -20°C~70°C, RH95% MAX
Storage Temperature: -40°C~80°C, RH95% MAX
Lens: 2.8mm, 3.6mm Optional
Lens Angle: 120°, 92°

3. Monitor with reversing grid lines

7" Digital Screen TFT LCD Reversing Monitor
Color System: PAL/NTSC (AUTO)
Display Resolution: 2400(H) X 480(V) dot
Wide view angle(CR>10):(up/ down): 45/65 (left/right): 65/65
Brightness (cd/m2): 400 (Automatically Adjust Environment by According)
Contrast ratio: 500:1
Back-light: Single LED
Operating temperature: -20°C to +70°C
Storage temperature: -30°C to +80°C
Free Operating Voltage DC8-32V
4-Pin Mini Jack (1)NC (2) Green: Reverse Gear Input (3) DC 12 Volt, 0.2A DC (output) (4) Ground
External dimensions:L*W*T(185X124X48) mm(without mounting)
Weight Approx: 379g

1. Heated Reversing Camera

1/3" COLOR CCD SENSOR SPECIFICATIONS
With Audio and IR
IP69 Waterproof Camera
Image Device: SHARP
TV System: PAL/NTSC
Effective Pixels: 512x582 pixels / 512x492 pixels Scanning System:2:1 Interlace
Resolution: 420TV lines
Minimum Illumination: 0 Lux/F1.2 with IR
Microphone: Included
Video Output: 1.0vp-p, 75ohm
S/N Ratio: Better than 48dB
Current Consumption: Max. 300mA
Operating Temperature: -30°C-70°C, RH95% MAX
Storage Temperature: -40°C-80°C, RH95% MAX Lens: f=3.6mm / 2.8mm F=2.0
Lens Angle 120°
15G-force rated shock resistant for the camera

Waterproof Shuttle Buggy Camera System



- Blind side Cameras allow operator to be aware of equipment positioning and location of adjacent personnel.

-Waterproof Quad monitor allows for display of multiple camera views simultaneously for optimal situational awareness

-Camera views of the hopper, feeder and asphalt dispersion ensure accurate material transfer, while ensuring safer operations.

PROVIX.NET
Now I CAN SEE!

Waterproof Compactor Camera System



CALL TOLL FREE: 1-888-434-0253 — CONTACT: SALES@PROVIX.NET — VISIT: WWW.PROVIX.NET

PROVIX.NET
Now I CAN SEE!

Street Sweeper Camera System

Shutter keeps lens clean when not in use



CALL TOLL FREE: 1-888-434-0253 — CONTACT: SALES@PROVIX.NET — VISIT: WWW.PROVIX.NET

Grader Camera System

Shutter keeps lens clean when not in use



ffhC ffhC ffh C

ffhC ffhC C

L ffh ffh R C C C

ffh C C ffhC

ffhC ffhC ffhC ffhC

Vffh ffh ffh ffh C C C C

L C C C C

ffhC C C C C C C

C ffhC

A ffh C e ffhC C ffhC C C

CL C ffhC C

C ffh C

C ffhC C C C C

ffhC fb C

C C C

ffh C CC CC C C

ffh CCCCCC C

ffh C ffhC C C CC C

ffhC C A C C

Vffh ffh ffh ffh C C C C

C C ffhC ffh C LC

CC ffhC C

PROVIX.NET
Now I CAN SEE!

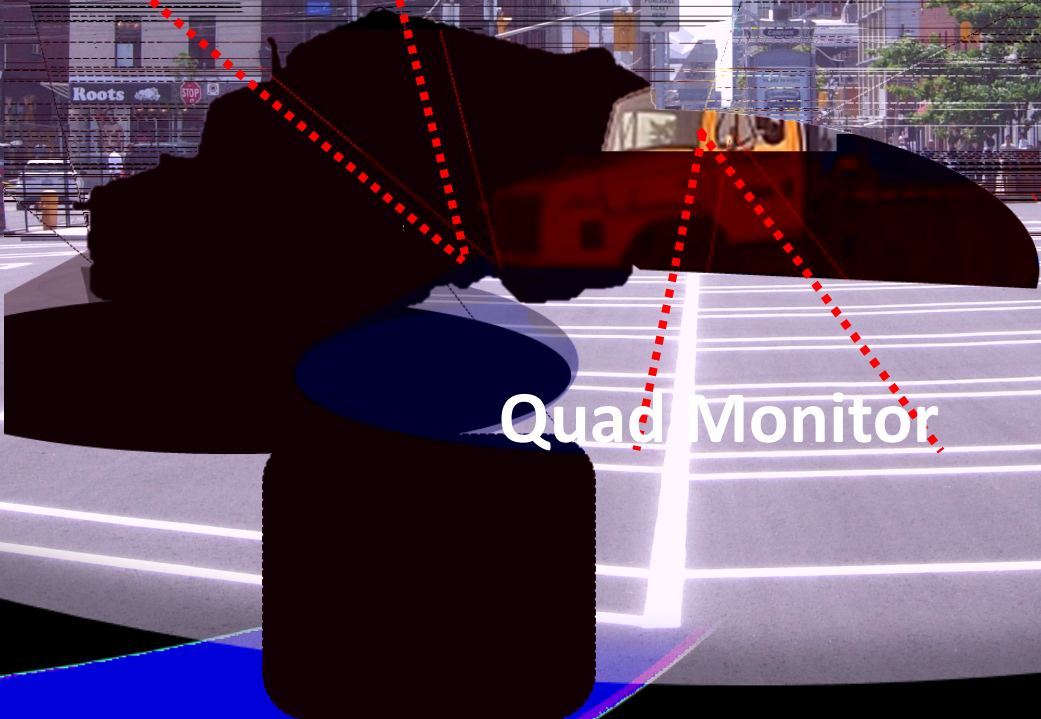
Dual Camera System with Recording



Blindspot Camera



Shutter Camera



Quad Monitor

PROVIX.NET
Now I CAN SEE!

Part # VEC-70MQSH180-32GB

This system is purpose built for waste haulers. The camera system includes an automatic reverse activated or "switch on when required" heated rear shutter camera, and a forward facing bullet style camera with 180 degree field of view. Operators can see everything behind and in front of their vehicle, regardless of seating position. The 7" LCD TFT monitor includes a DVR that records both cameras all the time, and with a 32 GB SD card, an entire shift can be recorded. Cameras are waterproof and the vehicle mounted DVR monitor offers auto brightness control as well as intuitive menus and high resolution viewing. Monitor will display camera based on the direction of travel, or both cameras sim-



CALL TOLL FREE: 1-888-434-0253 — CONTACT: SALES@PROVIX.NET — VISIT:

WWW.PROVIX.NET

Part# VEC-SP70C3-HT-R

Tanker/Pumper Camera System

A Beneficial Addition To Any
Fire Department Tanker Or Pumper Truck



VEC-70M3AV

SHV-B086MSH-110C



Part# VEC-SP70C3-HT-R



Specifications

Monitor Specifications:

- LCD size:** 7.0 inch (178 mm)
- Brightness:** 400cd/M²
- Contrast Ratio:** 500:1
- Dimensions:** 185 x 124 x 48 mm
- Dimensions:** 7 x 5 x 1 inch
- Viewing Angle:** Up/45°, Dwn/65°, R/65°, L/65°
- Power Consumption:** 12W (12V/1A)
- Temperature Range:** -20° C to 70° C
- 24/12 Volt Power Regulator Built-In
- Supports 3 Camera Inputs



VEC-70M3AV

1/3" SHARP CCD:

- Image Device:** 1/3" SHARP CCD
- TV System:** PAL:25f/s NTSC: 30f/s
- Effective Pixels:** 512 x 582 pixels / 512 x 492 pixels
- Sensing Area:** 4.9mm x 3.7mm
- Scanning System:** Interlace
- Sync. System:** Internal
- Resolution:** 420 TV Lines
- Horizontal Sync. Frequency:** 15.625KHz/15.734KHz
- Vertical Sync. Frequency:** 50Hz/60Hz
- Minimum Illumination:** 0.1 Lux (day), 0 Lux (with IR)
- Microphone:** optional
- Video output:** 1.0Vp-p, 75Ohm
- Gamma Consumption:** 0.45
- AGC:** auto
- S/N Ratio:** Better than 48dB
- White Balance:** Auto
- Electronic Shutter:** Auto:1/50 (PAL), 1/60 (NTSC) ~1/100,000
- BLC:** Auto
- Current Consumption:** day: 12V/70mA、24V/45mA night: 12V/245mA、24V/145mA
- Power Supply:** 8~32V
- Operating Temperature:** -30°C~+70 ,°C RH95% MAX
- Storage Temperature:** -40°C~+80 ,°C RH95% MAX
- lens:**f=2.8mm/3.6mm,F=2.0
- lens angle:** 120°/92°



SHV-B086MSH-110C

Provix Inc.
6436 Highway 89
Alliston, Ontario

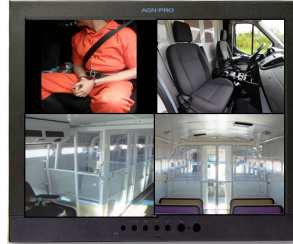


PRISONER TRANSPORT VIDEO MONITORING SYSTEM

Choose between 4, 6 or 8 cell cameras with recorded audio and video

Up to 300 hours of Recorded Video

Optional Wireless Upload to HQ Server



Up to 8 channel digital recorder, D1 Hi-definition H.264 "AVI", up to 8 channel audio, 16 GB SD card or 500GB HardDrive, 300 recording hours, view all cells all the time on the colour monitor, up to 8 wall mount IR cameras (180 degrees), 4, 6 or 8 internal microphones, "windows readable file type", no conversion required.

TRANSPORT WITH CONFIDENCE



888 434 0253
sales@provix.net
www.PROVIX.net

PathFindIR II

See Clearly in Total Darkness

PathFindIR II is a powerful thermal night vision system that lets you see road hazards clearly in total darkness, detecting and alerting you to nearby vehicles, people, and animals.

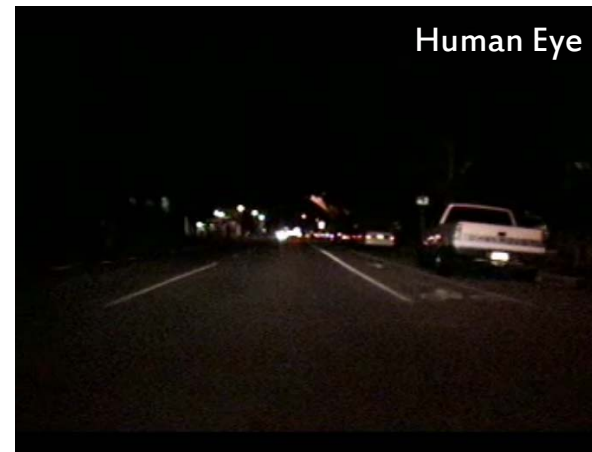
See Farther Than Ever Before

Headlights usually only let you see about 450' straight ahead, but PathFindIR II sees heat not light, so you can see everything in front of you up to four times farther down the road. Now you can see clearly, night and day, in good weather and bad, without being blinded by the glare of oncoming headlights.

And when you can see farther you have more time to react. More time means more options, smoother driving in emergencies and more room to stop. It's the one thing that can help you avoid traffic accidents. With PathFindIR, you can see pedestrians, cars, animals, and virtually any other hazard from farther away, and as they approach the road from either side.

Benefits of PathFindIR II:

- See in total darkness
- Automatic detection and alerts of Pedestrians and Animals
- See pedestrians and vehicles past the glare of oncoming headlights
- See many hazards over four times farther away than with headlights
- See through dust and smoke
- Have more time to react
- Help avoiding accidents and staying safe



Specifications



PathFindIR II

KEY PERFORMANCE CHARACTERISTICS

Thermal Imager

Sensor Type	320 x 240 Uncooled Microbolometer
Field-of-View	24° (h) x 18° (v)
Spectral Band	8-14 microns (LWIR)
Outputs	NTSC

Power

Power Requirements	12 VDC
Power Consumption	2 W (6 W w/heater on) 1.8 A max. system current

Environmental

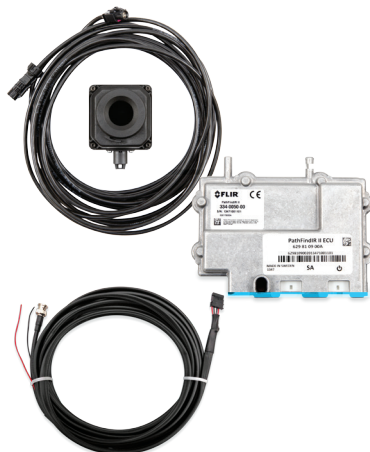
Operating Temperature	-40°C to 80°C
Weather Resistance (Camera)	Hermetically Sealed, Automotive Qualified
Weather Resistance (ECU)	Non-Hermetic; Passenger Compartment mount required
Window	High-Impact Resistant Optic w/ Built-in Automatic Heating Element Replaceable Window

Physical

Camera Dimensions	2.6" x 3.4" x 3.2" (60 x 86 x 82 mm)
Camera Weight	0.6 lb (300 g)
ECU Dimensions	5.8" x 4.3" x 0.9" (148 x 110 x 24 mm)
ECU Weight	0.7 lb (350 g)

COMPACT, EASY TO INSTALL

PathFindIR II is compact and installs easily into almost any vehicle. All you need is a display with an auxiliary NTSC video input.



ADDITIONAL OPTIONS

An optional Installation Kit is also available, which includes mounting brackets and a compatible monitor.



SANTA BARBARA

FLIR Systems Inc
70 Castilian Drive
Goleta, CA 93117
PH: +1 805.964.9797
FAX: +1 805.685.2711

PORTLAND

Corporate Headquarters
FLIR Systems, Inc.
27700 SW Parkway Ave.
Wilsonville, OR 97070
PH: +1 866.477.3687
FAX: +1.503.498.3153

www.flir.com/cvs



PROVIX.NET
Now I CAN SEE!

PATROLIR PRO TACTICAL VEHICLE CAMERA

PAN TILT AND ZOOM

- STATE OF THE ART THERMAL IMAGING TECHNOLOGY
- REQUIRES NO ILLUMINATION
- HIGH SENSITIVITY DETECTOR
- 320 X 240 RESOLUTION
- COMPACT PANNING ENCLOSURE
- IT'S ALL FLIR INSIDE
- FULLY AUTOMATIC IMAGE OPTIMIZATION



FLIR's PATROLIR IS A NEW, LOW COST, THERMAL IMAGER ENGINEERED FOR LAW ENFORCEMENT VEHICLE APPLICATIONS. THERMAL IMAGING IS A POWERFUL TOOL IN LAW ENFORCEMENT BECAUSE SUSPECTS CAN'T HIDE THEIR HEAT, AND SINCE IT'S PASSIVE, SUSPECTS DON'T KNOW THEY ARE BEING WATCHED. THE PRO VERSION INCLUDES A POWERFUL LOWLIGHT CAMERA FOR LONG RANGE SURVEILLANCE WHEN LIGHTING CONDITIONS PERMIT.

You CAN RUN BUT YOU CANT HIDE FROM FLIR

888 434 0253
sales@provix.net
www.PROVIX.net

PROVIX
6436 Hwy 89
ALLISTON, ON
1-866-542-1343

PROVIX

TACTICAL COMMAND CENTER REMOTE VIDEO SYSTEMS

HPSee: 26x Optical Zoom
Advanced LOOK Controller



Manual Controls:
Simple and Effective
Interfaces



Multiple DVR Options:
Physical and Network Drives



Tactical Camera Systems with Long Range Zoom and Thermal Imaging enable Command Center Video Viewing at the scene, in the truck or at Headquarters, while recording in HD for Consultation, Evidentiary, Training or Review Purposes.

**VIEW EVENTS
REMOTELY OFF SITE**

PROVIX COMMAND SOLUTIONS



WWW.PROVIX.NET
WWW.EQUIPMENTCAMERA.COM
SALES@PROVIX.NET

6436 HWY 89 EAST,
ALLISTON, ON. L9R 1V2

PROVIX.NET
Now I CAN SEE!

ARMORED CAR MULTI CAMERA SYSTEM



Hook up one to Four Cameras!

Camera Specifications:

Image Device: SHARP

TV System: PAL / NTSC

Effective Pixels: 512 x 582 Pixels / 512 x 492 Pixels

Resolution: 420TV lines

Minimum Illumination: 0 Lux/F1.2 with IR

Microphone: Yes

Video Output: 1.0vp-p, 75Ohm

AGC: Auto

S/N Ratio: Better than 48dB

White Balance: Auto

Current Consumption: Max. 300mA

Power Supply: DC12V

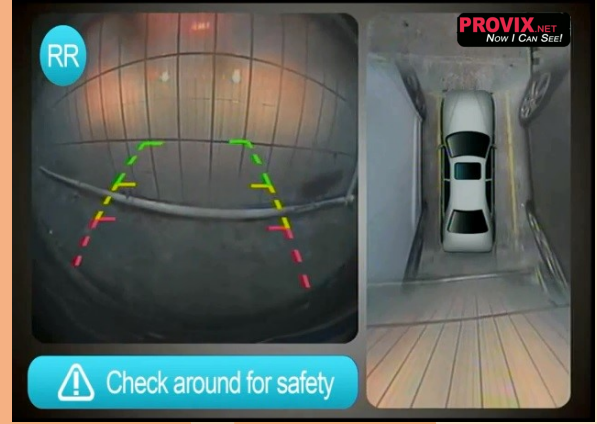
Operating Temperature: -20°C~70°C , RH95%
MAX



CALL TOLL FREE: 1-888-434-0253 — CONTACT: SALES@PROVIX.NET — VISIT: WWW.PROVIX.NET

360° Panoramic Camera System

Applicable for ALL Vehicles and Equipment



• r r i
ff i r ff
ff

• i ff

• r

• r fi r ff
r r

• ff ff
i rr i i R

REARVIEW CAMERA SYSTEM

ADD A REARVIEW CAMERA SYSTEM TO ANY VEHICLE

PARKING GRIDLINE MIRROR SPECIFICATIONS:

4.3-INCH TFT LCD MIRROR MONITOR

480 X 272 RESOLUTION DISPLAY

ANTI-GLARE COATED GLASS

TWO VIDEO INPUTS

REVERSE TRIGGER OVERRIDE

ADJUSTABLE LCD BRIGHTNESS AND CONTRAST



ONSTAR AUTO DIM MIRROR SPECIFICATIONS:

ONSTAR READY MIRROR MONITOR

3.5-INCH TFT LCD MIRROR MONITOR

LCD DIMS AUTOMATICALLY AT NIGHT

4:3 ASPECT RATIO

REVERSE OVERRIDE

HIGH RESOLUTION DISPLAY

EM APPROVED



1/4 INCH CCD COLOUR CAMERA SPECIFICATIONS:

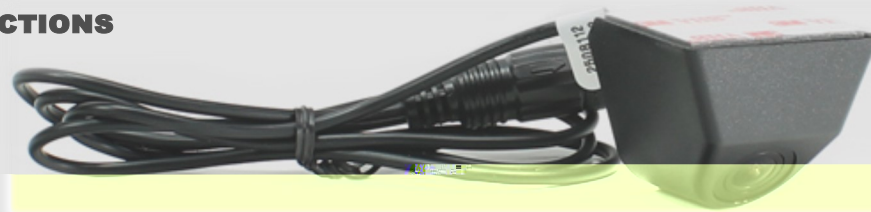
1/4 INCH CCD COLOUR CAMERA

160—DEGREE PERIPHERAL VIEW

WATERPROOF CASE WITH ANTI-FOG LENS

0.5 LUX LIGHT SENSITIVITY

RCA VIDEO CONNECTIONS



ACTUAL SIZE



PROVIX.NET
Now I CAN SEE!



DODGE

Tailgate Camera Systems

For All Your Pickup Truck Needs



Navigation Mirror

BLUECONNECT



6 colors to choose from to color match the vehicle

- Rear Camera Display Mirror with available Bluetooth & Navigation

- Factory OEM stand-alone Bluetooth system

OnStar FMV

Additional Products



- Universal OnStar Mirror kit for any vehicle – Navigation, Bluetooth, Crash Response and Emergency Roadside Assistance

Double Din Mult source Head Unit with Navigation

Tablet



Single Din Mult source Head Unit

Mini

MKI Series kits

CK Series kits

CALL TOLL FREE: 1-888-434-0253 — CONTACT: SALES@PROVIX.NET — VISIT: WWW.PROVIX.NET

Sprinter Van GPS/Camera System

TOR-GPS1700-VAN



Switch from GPS to Rearview Camera instantly



Navigate in style with the new Magellan®RoadMate® 1700GPS device.

1 Year Warranty

Premium features includes:

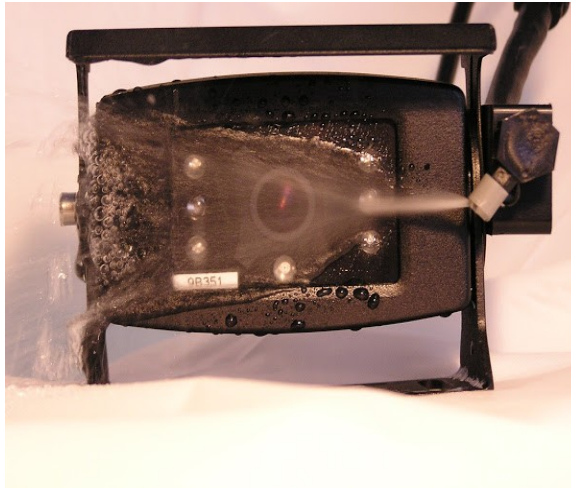
- 7-inch wide color touchscreen
- QuickSpell® with SmartCity search; highway exit POI search and spoken street name guidance.
- Free product lifetime map updates

Features:

- 7-in. touch screen, WVGA display with Lifetime map updates with RearView Camera Display
- CAA/AAA TourBook® Guide - provides ratings and descriptions on CAA/AAA approved places to stay, play, dine, and more
- 6 million points of interest (POI) OneTouch™ favourites menu - bookmarks your favourite destinations and searches so you can find them anywhere you travel and find with a single touch. Highway lane assist - shows realistic highway signs to guide you and ensure that you'll choose the correct lane while navigating or exiting. Speaks street names and directions / SmartDetour™ Highway exit points of interest (POI) - finds gas stations, restaurants, hotels, and more near upcoming highway exits
- QuickSpell® narrows address and city searches, while typing to make destination entry easy
- Multi-destination routing - automatic or user defined -Preloaded premium maps - United States, Canada and Puerto Rico
- External audio/video input and Rear View Camera, Connecting Cable. MicroSD Card slot
- **What's Included:** Magellan® 1700- GPS & PROVIX Rearview Camera with IR LEDs and Custom Camera Cable, Mounting Brackets and Power Harness
- Lifetime map upgrades Dimensions (W x D x H): 19.1 cm x 1.6 cm x 10.6 cm; (7.5 in. x 0.6 in. x 4.1 in.)
- Weight: 297 g (10.5 oz.)
- Data cable and Camera Power Video Cable.

PROVIX CAMERA-WASH SYSTEM

PROVIX.NET
Now I CAN SEE!



Cleans the Camera lens of Dirt, Ice, Dust and Snow with the push of a button!

KEEP CAMERA LENS CLEAR TO ENHANCE MOBILE SAFETY

- USES WASHER FLUID FOR YEAR ROUND OPERATION.
- 12 VOLT HIGH PRESSURE PUMP
- 1 GALLON RESERVOIR WITH MOUNTING HARDWARE
- MOMENTARY ROCKER SWITCH
- 30 FOOT ELECTRIC HARNESS AND FLUID TUBING KIT. CUSTOM LENGTHS AVAILABLE.
- EASY TO INSTALL
- COMES AS A KIT WITH 30' HARNESS OR CUSTOM LENGTHS ARE AVAILABLE
- OPTIONAL NEMA BOX FOR EASE OF MOUNTING
- ADD UP TO FOUR OPTIONAL NOZZLES PER KIT
- ADD AN OPTIONAL TIMER FOR AUTOMATIC CLEANING.
- ADD A STAINLESS STEEL BOX FOR MOUNTING ON THE SIDE OF OR UNDER SIDE OF PLOW/DUMP TRUCKS.
- CUSTOM KITS AVAILABLE

1-888-434-0253

SALES@PROVIX.NET

WWW.PROVIX.NET

Real Time GPS Fleet Tracking and Asset Recovery Solutions



GSM-TAG

Battery Operated GSM Asset Tracking Tag



GSM-FLEET

Wire-In Advanced Featured Vehicle Tracking Device



GSM-OBD

Plug-n-Play Advanced Featured Vehicle Tracking Device

-
-
-
-
-
-

-
-
-
-
-

-
-
-
-
-

All Satellite and GSM tracking devices require an active service plan to work.

