

PROVIX.NET
Now I CAN SEE!



Camera Systems & Lighting

SAFETY SYSTEMS FOR THE FIRE SERVICE

sales@provix.net • www.PROVIX.net • (888)434-0253



Camera Systems, Lighting & Alarms

SAFETY SYSTEMS FOR THE FIRE SERVICE

PROVIX is Vision Enhancement

PROVIX is a proud provider of a variety of fire safety products. From camera systems to lighting products; trust Provix for all your mobile safety and vision enhancement requirements.

We supply a variety of safety and video systems such as :

- FLIR Thermal imaging Cameras
- Cameras for Tankers/Pumpers
- Command Center Video Solutions
- HQ Remote Fire Scene Viewing
- PTZ Cameras
- Inspection Cameras
- Confined Space Communication System
- Explosion Proof Cameras and Lights
- Portable Work Lights
- Mobile
- Equipment Lights
- LED Flares



PROVIX IN

PROVIX.NET

Now I CAN SEE!

YOUR FIRE SERVICE?



Reveal FirePRO™

PERSONAL TIC FOR FIREFIGHTING.
AFFORDABLE, HIGH-RESOLUTION
THERMAL IMAGING CAMERA.

KEY CAMERA SPECS

- 320 x 240 Thermal Sensor
- 32° Field of View
- 4 to 1,022F Temperature Detection
- IP67 Rating
- Works Day or Night
- 300 Lumen LED Flashlight

PROVIX.NET
NOW I CAN SEE!



Reveal FirePRO is our most advanced handheld thermal imaging camera yet. Highly durable and easy to use, Reveal FirePRO combines a high-performance 320 x 240 thermal sensor with intuitive software to help you fight fires smarter and safer. And, when you need it, a powerful 300-lumen LED light is available at the touch of a button. The Reveal FirePRO delivers unprecedented high-resolution thermal imaging available at this price.

Find hot spots and heartbeats faster when every second counts. See through smoke, visualize your plan, and execute.



KEY FEATURES

- 320 x 240 High-Resolution Thermal Sensor**
76,800 temperature pixels for maximum image clarity and sensitivity
- Waterproof Design**
Durable and reliable design built with IP67 rating
- Wide, 32-Degree Field of View**
Easily scan a large area to identify hazards and heartbeats in seconds
- Long-Lasting Rechargeable Battery**
Up to 3.5 hours of continuous thermal imaging
- 3 Modes. Purpose-Built for First Responders**
Enhance your vision and situational awareness with a variety of color modes

BENEFITS

- Situational Awareness**
Visualize hazards invisible to the human eye and navigate safely
- Affordable Personal TIC**
Equip the entire department with the first affordable personal TIC
- See Through Smoke. Flashlight Optional.**
300 lumen LED flashlight available at the touch of a button
- Search and Rescue**
Find victims and self-rescue faster with a reliable personal TIC
- Execute 360 Size-ups & Overhaul Faster**
When seconds count, a Seek personal TIC saves time and lives



K-SERIES



Like the vital protective gear you wear and tools you carry, a thermal imaging camera has become essential firefighting equipment.

Imagine if everyone on the crew could pack a TIC to help them maneuver more safely, attack fires more strategically, and save lives. With FLIR K-Series and the new K2, a TIC for every firefighter is now more feasible than ever before.

Model	FLIR K2	FLIR K45	FLIR K55	FLIR K65
IR Resolution	160 x 120 pixels	240 x 180 pixels	320 x 240 pixels	
Contrast optimization	MSX	Digital image enhancement using FSX		
Sensitivity (NETD)	< 100 mK @ +86°F	< 40 mK @ +86°F	< 30 mK @ +86°F	
NFPA Compliant		—	✓	

FLIR K-SERIES FEATURES

So affordable, now more fire trucks and firefighters can carry one

FLIR develops and manufactures more thermal imaging cameras than any other company. This integrated capability allows us to offer the K-Series at an extremely affordable price to help you stretch your department's budget.

Clear and crisp thermal images

The maintenance-free uncooled IR sensor and FSX enhancement produces detail-rich thermal images at 320 x 240 pixels (K65 and K55) or 240 x 180 pixels (K45), brightly displayed on the large 4" K-Series LCD, helping you navigate better and expedite critical decisions.

Rugged & reliable

K-Series TICs are designed to withstand the toughest firefighting conditions. They can take a 2-meter drop onto a concrete floor, are water resistant (IP67), and remain fully operational up to +500°F (5 minute duration). The K65 complies fully with the NFPA 1801 2013 standard for firefighting thermal imaging cameras.

Produce simple reports

Save up to 200 thermal images to the internal memory of the K45, K55, and K65. Review them later from the camera or export them and create a report to recap what happened at the scene.

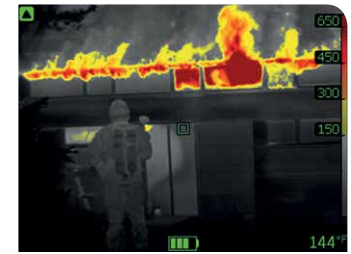
Easy to use, even with gloves on

3 large buttons on the K45, K55, and K65 provide quick access to the intuitive and simple K-Series user interface so you can stay focused on the challenging and fast-changing job at hand.

In-Camera video storage (K55 & K65)

The K55 and K65 can record 200 thermal video clips (up to 5 minutes each) that you can replay on the camera LCD or export for future reference – ideal for onsite review and for training purposes.

TI BASIC



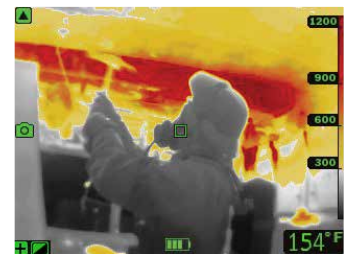
For initial fire attack and life rescuing operations.

BLACK AND WHITE FIRE FIGHTING



Same as the TI Basic mode but a grey scale image.

FIRE



For use in context with higher background temperatures where a lot of open flames are present, particularly in structural fires.

SEARCH & RESCUE



For use with lower temperature situations, such as initial rescue efforts after traffic accidents, searches in wooded landscapes, etc.

HEAT DETECTION



Used for finding hotspots. The hottest 20% of the scene is colored in red.



FLIR K2

A TIC for Every Firefighter that Saves More than Just Money
So Every Firefighter Goes Home

FLIR is on a mission to make thermal imaging cameras standard issue equipment. Not just one TIC for every truck, but for each crew member in it.

Without sacrificing capability, ruggedness or reliability, the K2's \$1,295 price tag makes that more possible than ever. But extreme affordability is just one benefit.

Multi-spectral dynamic imaging (MSX®)

The K2 uses FLIR's patented MSX technology that embosses key details from the built-in visible camera onto thermal images, providing you with the extra perspective to help you stay oriented and safer while saving others.

Compact and easy to use

FLIR K2's compact design makes it light and easy to attach to turnouts. And a single large button makes the camera simple to activate even with heavy gloves on so you can start seeing your way through dark, smoky conditions immediately.

Rugged & reliable

Engineered to survive tough operating conditions, the K2 withstands a 2-meter drop onto concrete, is water resistant (IP67) and is fully operational up to +500°F (for up to 3 minutes).

Multiple image modes

FLIR K2 can be set to one of seven different thermal imaging modes depending on the primary use of the camera. Switch between them using FLIR Tools software that you can download free from www.flir.com.

Multiple firefighting applications

Fire up the K2 as soon as you arrive on scene for the 360 size-up. Take it inside to see your way through smoke, keep track of others, and determine where to focus fire attack efforts. Find stranded victims faster. And scan for hot spots during overhaul.

A new level of affordability

The K2's economical price makes powerful thermal imaging more accessible to more firefighters – a small investment that can help pay big dividends when it comes to safety, saving lives, and protecting property.



FLIR K33 & K53

Thermal Imaging Cameras for Firefighters

STREAMLINED HIGH PERFORMANCE MADE EVEN MORE AFFORDABLE

FLIR's new K33 and K53 provide you with two new lower-cost, easier-to-use options without sacrificing the reliable clarity and performance that FLIR K-Series TICs are well-known for. Both feature FLIR's FSX™ Flexible Scene Enhancement that intensifies structural and textural details in thermal images for better perspective and orientation.

By making it easier to see more clearly under the smokiest, darkest conditions, the K33 and K53 can help improve situational awareness and provide first responders a greater sense of confidence and safety as they forge ahead to fight fires and save lives.

Fire Power Simplified

Simple operation lets you stay focused on the job. A single, glove-friendly button gets you up and running. A squeeze of the trigger freezes a K33 image or captures K53 stills and videos for reviewing later.

Uncompromising Resolution

Higher-resolution thermal imaging once exclusive to FLIR Kx5 models is now available in a streamlined package. Choose the K33 for 240 x 180 pixel IR or the K53 for 320 x 240 quality.

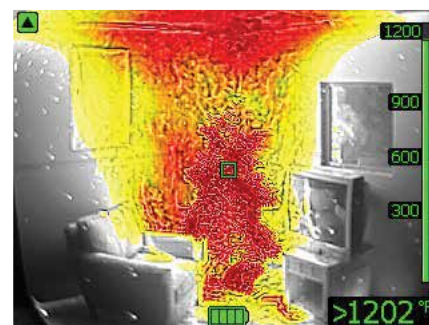
Vivid FSX™ Thermal Images

A big, bright 4" LCD and onboard FSX digital processing enhances thermal image detail for greater visibility, making it easier for firefighters to find their way. 60Hz frame rate keeps up with the action.

The Best Warranty

FLIR's unique 2-5-10 Warranty covers the battery for two years, parts and labor for five, and the thermal imaging detector for 10.

* Prices are subject to change.



FLIR KF6

Mountable Thermal Imaging Cameras for Aerial Firefighting Apparatus

A New TIC Vantage Point

The FLIR KF6 is the first mountable OEM TIC specifically for aerial apparatus applications. Providing a high-angle thermal view of rooftops, upper stories, and other elevated structures, KF6 can help your team see clearly through smoke and total darkness from an additional strategic perspective for more effective targeting and situational awareness.

Aerial Mounting Flexibility

The KF6 can be easily and securely fixed-mounted under or atop aerial platforms and at the end of straight sticks. A single cable with a MIL-C connector provides 10-32 VDC in and composite video out for simple installation.

Best Resolution Shows You More

Featuring 640 x 480 IR resolution and a 69° FOV, bolstered with onboard FSX™ Flexible Scene Enhancement, the KF6 produces vivid thermal images, providing finer detail and greater visibility for easier orientation and structural identification.

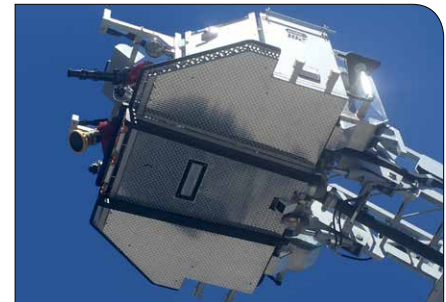
Convenient Monitoring

Pair the KF6 with your preferred video display with one cable and view live, high-angle thermal video on a monitor at the turntable level, on an in-truck LCD, or on a screen right at the platform itself. Or connect to multiple displays via wireless systems.*

CDMQ Ruggedness

FLIR built the KF6 to our Commercially Developed Military Qualified standards. With a rugged housing that meets MIL-STD-810G, an IP67 rating, and extensive IEC testing, KF6 is ready to withstand harsh fire scene operating conditions, well-protected from exposure to heavy smoke and spray.

For more information on FLIR's firefighting thermal imaging cameras, please visit www.flir.com/fire.



KF6 mounted on underside of platform.



Close up view of KF6 mounted under platform.



KF6 provides high angle thermal perspective.



FLIR M-Series

Pan-Tilt-Zoom TICs for ARFF, Hazmat and All Emergency Vehicles

FLIR's M-Series redefines thermal imaging for first responder vehicles.

Drawing on our many years of experience building combat-proven thermal cameras for militaries and government agencies around the world, M-Series cameras provide you with the high level image performance and ease of use that firefighters and rescuers need to respond fast.

With up to 640 × 480 thermal imaging resolution, M-Series cameras let you see more from farther away, even in the smokiest, darkest conditions.

Steer Clear of Danger & Size Up the Scene

Vehicle-mounted M-Series TICs can help you quickly assess conditions as you approach a scene and upon arrival. See farther at night en route, detect fire intensity from a safer distance, spot temperature differences showing the presence of hazardous materials, visualize liquid levels in tanker trucks, scan for skid mark heat, look for victims ejected from vehicles, and locate the seat of a fire for initial attack.

Take Control Right from the Officer's Seat

FLIR M-Series cameras come with a simple joystick controller that lets you quickly and continuously pan 360 degrees, tilt up or down 90 degrees, and digitally zoom to help you target areas of concern using your in-truck display system.

See More with High Res Thermal + Visible

Choose from three M-Series models: the M324XP with 320 × 240 thermal imaging, the M625XP with 640 × 480 pixels, or the M625L that packs a powerful dual thermal imaging and visible light payload into one compact PTZ unit. All feature FLIR's thermal DDE detail enhancement.

Weatherproof and Simple to Install

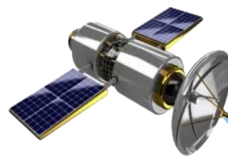
Built to withstand harsh environments and powerful jets of water, all M-Series cameras easily mount to the rooftop of your first responder vehicle cab and seamlessly integrate with existing electronics and displays.



	FLIR M324XP	FLIR M625XP	FLIR M625L
IR thermal resolution:	320 × 240 VOx Microbolometer	640 × 480 VOx Microbolometer	640 × 480 VOx Microbolometer
Range performance:			
Person	1,500 ft (457 m)	2,700 ft (823 m)	2,700 ft (823 m)
Small vehicle	4,200 ft (1280 m)	1.38 mi (2.2 km)	1.38 mi (2.2 km)
E-Zoom:	2x	2x and 4x	2x and 4x
Black & White Lowlight Camera:	N/A	N/A	768 × 494 with FOV matched to IR

Command Center Video

View Fire Scene From HQ



Transmitted from the mobile command vehicle to head quarters through a satellite link



Mast mounted tactical command vehicle video system with long range pan tilt and 36x zoom camera enables high resolution, close up viewing at the scene, in the truck or at headquarters, while recording in HD for Consultation, evidentiary, training or review purposes. Dual Sensor Thermal Imaging Cameras available.

Remote viewing capability is included in the command center system and can be accessed with a pre-existing Static or Dynamic DNS (DDNS or DynDNS) IP address for the vehicle.

System Includes:

- 36 X Pan Tilt & Zoom High Definition Camera
- Camera w/ IR sensors for low light operation [120m range]
- Joystick Keyboard controller
- Nycoil Cable Wrap - To protect and route video cable while mast telescopes and retracts
- Video Server for remote viewing
- 2-15" LCD TFT Colour Display Monitors
- Optional Thermal Imaging/Dual Sensor Camera

Provix Command Video System With Remote Viewing

- PTZ Camera (optional thermal)
- Handheld 7" Monitor w/ intergrated PTZ control
- 10ft or 13ft tripod
- Wifi & SD recording
- Rugged & Portable cases
- Quick release mount



Magnesium Alloy Front Cover

-15°~ 90° Tilt Range (Auto Flip)

Automatic Infrared Illuminators



60M Spotlight

360° Pan Range

Built in defogger

36x Zoom



Vehicle Camera System

Eliminate Blind Spots - Beside and Behind Your Vehicle!



1. Heated Reversing Camera

1/3" COLOR CCD SENSOR SPECIFICATIONS

With Audio and IR

Image Device: SHARP

TV System: PAL/NTSC

Effective Pixels: 512x582 pixels / 512x492 pixels Scanning System: 2:1 Interlace

Resolution: 420TV lines

Minimum Illumination: 0 Lux/F1.2 with IR

Microphone: Included

Video Output: 1.0vp-p, 750hm

S/N Ratio: Better than 48dB

Current Consumption: Max. 300mA

Operating Temperature: -30°C-70°C,

RH95% MAX Storage Temperature: -40°C-

80°C, RH95% MAX Lens: f=3.6mm /

2.8mm F=2.0

Lens Angle 120°

15G-force rated shock resistant for the camera

2&3. Side Camera

Image Device: SHARP

TV System: PAL/ NTSC

Effective Pixels: 512 x 582 pixels / 512 x 492 pixels

Sensing Area: 4.9mm x 3.7mm

Scanning System: 2:1Interlace

Sync. System: Internal

Resolution: 420TV lines

Horizontal Sync. Frequency: 15.625KHz / 15.734KHz

Vertical Sync. Frequency: 50Hz / 60Hz

Minimum Illumination: 0Lux (Infrared lamps on)

0.1Lux(day) / F1.2 Video Output: 1.0vp-p, 750hm

Gamma Consumption: 0.45

AGC: Auto

S/N Ratio: Better than 48dB

White Balance: Auto

Electronic Shutter: 1/60(NTSC) / 1/50(PAL) ~

1/10,000 Seconds BLC: Auto

Current Consumption: Max. 150mA

Power Supply: DC12V

Operating Temperature: -20°C~70°C , RH95% MAX

Storage Temperature: -40°C~80°C, RH95% MAX

Lens: 2.8mm, 3.6mm Optional

Lens Angle: 120° ,92°

4. Monitor with reversing grid lines

7" Digital Screen TFT LCD Reversing Monitor

Color System: PAL/NTSC (AUTO)

Display Resolution: 2400(H) X 480(V) dot

Wide view angle(CR>10):(up/ down): 45/65 (left/right): 65/65

Brightness (cd/m2): 400 (Automatically Adjust Environment by According)

Contrast ratio: 500:1

Back-light: Single LED

Operating temperature: -20°C to +70°C

Storage temperature: -30°C to +80°C

Free Operating Voltage DC8-32V

4-Pin Mini Jack (1)NC (2) Green: Reverse Gear Input (3) DC 12 Volt, 0.2A DC (output) (4) Ground

External dimensions:L*W*T(185X124X48) mm(without mounting)

Weight Approx: 379g

Call: 1.888.434.0253

Contact: sales@provix.net

Visit: www.provix.net

Part# VEC-SP70C3-HT-R

Tanker/Pumper Camera System

A Beneficial Addition To Any
Fire Department Tanker Or Pumper Truck



VEC-70M3AV

SHV-B086MSH-110C



Fire Truck Digital Recording System



Four Channel Digital Recording System
CCD IR Cameras, 90 degree
7" TFT LCD Monitor
Automatic Rear-View

▶ **CMDVR-0402**
Front view



Rear view



Dual PTZ System



The Dual PTZ Camera is designed for a wide variety of applications. It consists of a thermal imager, high resolution zoom module, and pan/tilt/zoom. It enables operators to see clear details under dark or foggy conditions.

FEATURES

- Built-in 384*288 full time high sensitive thermal imaging sensor, provides clear view in a dark environment
- Integrated HAD 28X zoom module, 550TVL, 0.0015Lux
- PTZ system with high precision and higher holding torque. PTZ positioning precision up to $\pm 0.05^\circ$
- Aluminum PTZ case with high strength, special Fabrication Processing, full weather proof
- Fully sealed design, IP index up to IP67, Built-in surge and lightning strike protection device
- Built-in integrated defogging device, working temp range $-45^\circ\text{C} \sim 55^\circ\text{C}$
- 3 video outputs: thermal video, zoom module video and switch video
- Detect protocol & Baud rate automatically, soft address supported, convenient for use
- Digital image stabilization
- Dynamic Noise Reduction (1~5 steps)
- Image flip for stand / ceiling mount

Model	HTE-ATC-G1928	HTE-ATC-G2528	HTE-ATC-G4028
	Thermal Imaging Camera		
Sensor Type	Un-Cooled α Si	α Si IR microbolometer(No TEC)	
Resolution		384×288	
Sensor Size		25 μ m×25 μ m	
Focal	19mm	25mm	40mm
Focus	Fixed	Electronic	
IRIS		1.0	
FOV	28.5°x21.5°	21.7°x16.4°	13.7°x10.3°
Angular Resolution	1.3mrad	1.0mrad	0.625mrad
Detecting Range	1000m(Vehicle) 400m (Man)	1200m(Vehicle) 500m (Man)	2000m(Vehicle) 800m (Man)
Recognition Range	400m(Vehicle) 200m (Man)	500m(Vehicle) 250m (Man)	800m(Vehicle) 400m (Man)
Digital Zoom		1X, 2X, 4X	
Video Display		White / Black	
	Daylight Imaging Camera		
Video Sensor		1/4" SONY EXView HAD CCD	
Effective Pixel		PAL:752(H)×582(V) / NTSC:768(H)×494(V)	
Resolution		550 TVL	
Video System		PAL / NTSC	
		Color:	
		0.25 lux (F1.35, 50IRE);	
		0.16 lux (1/4 sec (NTSC);	
		1/3 sec (PAL), F1.35, 50IRE);	
		Mono:	
		0.0015 lux(1/4 sec (NTSC)	
Min Illumination		Auto / Manual / ATW / Indoor / Outdoor	
WB		Auto / Manual	
Focus		Auto / Manual	
IRIS		Auto / Manual	
S/N Ratio		Not less than 50dB	
BLC		On / Off	
Image Stabilization		On / Off	
DNR		1-5 Steps / Off	
Day/Night		Auto / Manual	
Optical Zoom		28X	
Digital Zoom		12X	
Lens		f=3.5 mm (wide) to 98 mm(tele) / F1.35 to F3.7	
View Angle		55.8° (wide) to 2.1° (tele)	
		PTZ	
Pan Range		360° Continuous	
Pan Speed		Control speed: 0.04° -100°/s; Preset speed: 100°/s	
Tilt Range		-15°~90°(Auto Mirror)	
Video System		PAL / NTSC	
Tilt Speed		Control speed: 0.3° ~60°/s, adjustable; Preset speed:60°/s	
Preset		256	
Preset Precision		±0.05	
PTZ stability		Two Degrees of Freedom gyroscope PTZ stability control system (Optional)	
		General	
Video Output		1 Channel Thermal Imaging Video; 1 Channel Zoom Module Video; 1 Channel Complex Video;	
Power		35W/50W(Heater On)	
Working Temp.		-45°C~55°C	
IP Index		IP67	
Anti-Vibration		Pan 9g / Tilt 15g	
Wind Resistance		180 km/h	
Dimension		Φ 190(mm)×300(mm) with damper (optional) Φ 190(mm)×275(mm) w/o damper	
Weight		6KGS w/o damper 7KGS with damper (optional)	



Provix Wireless Communication System

Wireless grab & go system that provides clear, **full duplex** group communication for challenging environments.

- CLEAR CONTINUOUS SOUND
- SECURE COMMUNICATION
- INTERFERENCE FREE
- EASY to USE & DEPLOY
- RUGGED CONSTRUCTION
- COMPETITIVELY PRICED
- 5-man group up to 800 M (2824 ft)
- 8-man group up to 1900 m (1 mile)
- LINE OF SIGHT
- PORTABLE
- LICENSE FREE
- FCC & IC Approved
- HEADSETS to SUIT your APPLICATION



FEATURES:

Custom configurations
& Headset options



System improves **safety, efficiency & productivity** for groups working in challenging environments.

HEADSET OPTIONS



● **DUAL SIDED WATERTIGHT MESH HEAD STRAP HEADSET** with highly sensitive throat mic. Light weight and under helmet or hard hat applications.



● **HEARING PROTECTOR HEADSET** with rear headband, over the head dual straps & noise cancelling boom mic -- electronics in earcup or beltpack version available.



● **SINGLE SIDED LIGHTWEIGHT HEADBAND HEADSET** with Boom Mic - comes with mesh head strap for under helmet wear (throat mic optional)

HEARING PROTECTOR HEADSET Wire-free eliminates the risk of entanglement	CATEGORY	HEADSET + BELTPACK Provides headset options & fast battery change out.
Rechargeable batteries in earcup/detachable charger supplied	BATTERY CHARGER	Comes with 3 Replaceable AA Batteries
10 hours of continuous use	BATTERY LIFE	15+ hours of continuous use
ON/OFF toggle switch earcup mounted	CONTROLS	ON/OFF toggle switch on top of belt pack
Volume control on earcup for receive audio		Volume control for receiving adjustment on belt pack
PAIRING button left earcup mounted		PAIRING button is located inside the belt pack
Power ON/Pairing Indicator LED		Power ON/Pairing Indicator LED
Hearing Protector headband mount with integrated DECT Radio in earcup, One master headset required	HEADSET MODELS	Hearing Protector headband mount Headset
		Single Sided Lightweight Headset
		Single Sided Mesh Head strap with Throat Mic Headset
		Dual sided Watertight Mesh Head strap with throat mic Headset
DECT6 GAP is interference free	RF CLARITY	DECT6 GAP is interference free
Noise Cancelling Water Resistant Boom Mics	MICROPHONE	Choice of Noise Cancelling Boom Mic or Watertight Throat Mic
Full duplex	OPERATIONS	Full duplex
Rechargeable batteries in earcup/detachable charger supplied	POWER SOURCE	3 AA Batteries located in Belt Pack
800 meters (2624 ft) line of sight range	RANGE	800 meters (2624 ft) line of sight range
24 dB	NRR HEARING PROTECTION	24 dB (headset specific)
Secure Encryption	SECURITY	Secure Encryption
Work group of 2 to 8 users (5+ group requires Cygnus™ LINK A & B)	USER CONFIGURATION	Work group of 2 to 8 users (5+ group requires Cygnus™ LINK A & B)
Low power - < 100 mw	VOLTAGE	Low power - < 100 mw

INTERFACE



● **BELT PACK INTERFACE** -- Houses 3 AA BATTERIES AND VOLUME CONTROL.

LINK



● **LINK BOX** -- PROVIDES ABILITY TO SEPARATE 2 WORK GROUPS OF UP TO 4 WORKERS PER GROUP FOR DISTANCES UP TO 1 MILE.

LIGHTS

Hella, Nordic, VisionX, Code 3, Whelen, Provix JWSpeaker



**Remote Controlled
Searchlights**



**Portable/ Battery
Operated Lights**



Light Bars



**Warning Light Sticks
& Arrow Boards**



Flood/Spot Lights



LED Work Lights



LED Scene Lighting

No Drill Magnetic Mounting Plate

The Provix magnetic mounting plate offers operators a convenient, sturdy and reliable platform to deploy magnetic mount lights of any type. The plate is installed via the rear cab lights and has a weatherproof seal on the back side for secure and dry installation.

Frame Material: Aluminum

Mounting Plate Material: Stainless Steel

Weight: 8 lbs

Mounting Surface Dimensions: 24" x 8"

Installation: Via Rear Cab Lights

Seal: Weatherproof

Finish: Powder Coated - Black, White, or Grey

Compatible Spotlights: Any Magnetic Mount Light

Ratings/Features:

Durable Construction

Stainless Steel Mounting Plate

Works with Any Magnetic Mount Light

Weatherproof Seal

Compatible Vehicle Brands

Chevrolet, Dodge, Ford, GMC, Nissan, Toyota



Provix Power Tower

Equipped with any combination of lights & cameras

- Operation: (1) 1000lbs Hand Winch
- Mast Cable: 3/16" Galvanized Aircraft Cable
- 125 mph Wind Resistance
- Trailer Dimensions: 7'L x 7'W
Trailer Bed
- Hitch: 2" Ball Coupler
- Wiring: 7-Pin Flat
- Axle: 3,500lb
- Weight: +600lbs



- Provides a safe and effective way for operators to quickly deploy cameras, security devices and other equipment to elevations up to thirty feet.
- Features a telescoping light tower that folds over for easy transportation.
- Rotating boom allows for 360° rotation.
- Removable mast head when not in use.
- Contains two 265 watt solar panels and a 500aH capacity battery bank with 250aH being usable.
- Mast Guidance System
- Custom builds can be provided for higher wind speed resistance when fully raised.



Component Control Center

PROVIX.NET
Now I CAN SEE!

SMALL AREA PORTABLE LIGHTING

The smaller jobs require portable lighting that is easy to work next to in confined areas, with no hot surfaces but bright enough to get the job done. PROVIX offers several lighting options that meet this criteria while also being energy efficient. Choose from the PROVIX LED Flood Light Series or any of the Defender industrial lighting products for the small jobs. Hang-A-Light offers overhead lighting with those small areas in mind that is cool burning and easy to install. No matter how small or large the area, PROVIX has a light for the job.

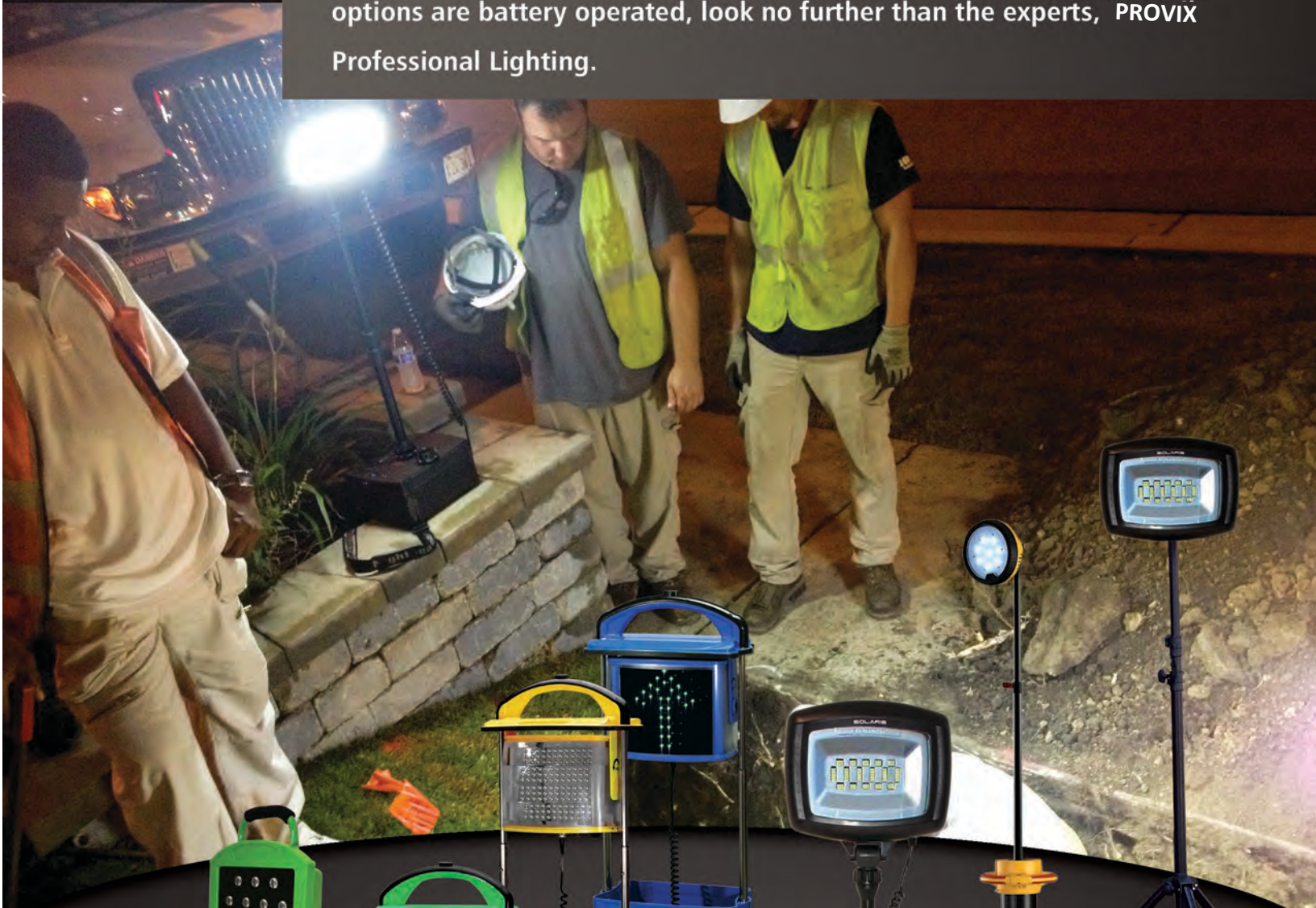


CALL: 1-888-434-0253 - CONTACT: SALES@PROVIX.NET - VISIT: WWW.PROVIX.NET

PROVIX.NET
Now I CAN SEE!

BATTERY OPERATED LED LIGHTING

PROVIX Professional Lighting offers many battery operated LED lighting options. All with superior LEDs that produce a bright white light that is easy to work near and have advanced battery technology that allows for maximum run times. When it is critical to the job that the lighting options are battery operated, look no further than the experts, PROVIX Professional Lighting.



CALL: 1-888-434-0253 - CONTACT: SALES@PROVIX.NET - VIST: WWW.PROVIX.NET

From LED handlamps to high output Torches, PROVIX has a handheld light for your next job! Choose from Defenders rechargeable or replaceable battery operated LED handlamps for those smaller jobs. Or, the PROVIX HID Torches when the job requires military-grade durability and extreme lighting conditions.



PROVIX Professional Lighting realizes that some jobs require a very specialized lighting option and we are committed to bringing that to you. PROVIX' vast network of engineers and manufacturing facilities allows us to customize lighting options for your particular application. Innovation and technology to make your job easier!



PROVIX.NET

Now I CAN SEE!



EASY-LOAD
BATTERY SYSTEM

GAS PRESSURE
RELEASE VALVE

WATERPROOF

WATERPROOF
ON / OFF / MOMENTARY
THUMB SWITCH

4AA XENON 38 LUMENS CL1 DIV2*				
SWITCH	BATTERIES	COLOUR	Certified	
UKP-14122	Rotate	Yellow	Yellow	CL1 DIV 2*
UKP-14110	Rotate	included	Yellow	CL1 DIV 2*
UKP-14123	Front	Yellow	Yellow	CL1 DIV 2*
UKP-14107	Front	included	Yellow	CL1 DIV 2*
UKP-14108	Front	included	Black	CL1 DIV 2*
UKP-14109	Front	included	Orange	CL1 DIV 2*
UKP-14120	Front	included	Safety Yellow	CL1 DIV 2*

*See flashlight for details.

4AA ZOOM eLED 77 LUMENS CL1 DIV2* HIGH/ LOW, WIDE TO SPOT ADJUSTABLE BEAM				
NUMBER	SWITCH	BATTERIES	COLOUR	Certified
UKP-14501	Front	included	Yellow	CL1 DIV 2*
UKP-14502	Front	included	Black	CL1 DIV 2*
UKP-14506	Front	included	Safety Yellow	CL1 DIV 2*

*See flashlight for details.

4AA eLED CPO 120 LUMENS CL1 DIV1*				
NUMBER	SWITCH	BATTERIES	COLOUR	Certified
UKP-14431	Tail	included	Safety Yellow	CL1 DIV 1*
UKP-14457	Tail	included	Black	CL1 DIV 1*
UKP-14439	Front	included	Safety Yellow	CL1 DIV 1*
UKP-14459	Front	included	Black	CL1 DIV 1*

*See flashlight for details.

4 AA HELMET CLIPS & ACCESSORIES

Nylon Belt Pouch
Keeps the 4AA handy
and protected

UKP-14816



Leather Belt Punch
These belt punches are
perfect for carrying the
4AA Light on a belt.

UKP-3392Z



Safety Wand
For highway maintenance
and emergency

UKP-4877-UKP-4884



Fire Helmet
Wide Brim Hat Clip
Adjustable

UKP-14803



Slotted Hard
Hat Clip
Adjustable

UKP-14804



Earmuff
Clip
Adjustable

UKP-14809



Fire Helmet Clip
Adjustable
Stainless Steel

UKP-14818



Universal Helmet Clip
Fits Most Hats

UKP-14819



Rylee Fire Helmet Clip

UKP-14851



Call: 1 888 434 0253

Contact: Sales@provix.net

Visit: www.provix.net


2AAA Penlight
Xenon 12 Lumens



For use in Hazardous Locations Class 1, Div 2

Burn Time: 1.5 to 2 hrs.
Beam Distance: 115 ft.
Batteries: 2 AAA Alkaline
Waterproof: 500 ft.
UKP-13007 Black
UKP-13051 Safety Yellow

2AAA Mini Pocket
Xenon 12 Lumens



For use in Hazardous Locations Class 1, Div 2

Burn Time: 1.5 to 2 hrs.
Beam Distance: 115 ft.
Batteries: 2 AAA Alkaline
Waterproof: 30 ft.
UKP-09007 Black
UKP-09064 Safety Yellow

2AAA Mini Pocket
eLED 7 Lumens



Burn Time: 14 to 15 hrs.
Beam Distance: 46 ft.
Batteries: 2 AAA Alkaline
Waterproof: 3 ft.
UKP-09102 Black
UKP-09117 Safety Yellow

2AAA Penlight
eLED 7 Lumens



Burn Time: 14 to 15 hrs. Beam Distance: 46 ft. Batteries: 2 AAA Alkaline Waterproof: 3 ft.
UKP-13301 Safety Yellow
UKP-13303 Black

2AAA Penlight
eLED 35 Lumens



For use in Hazardous Locations Class 1, Div 1

Burn Time: 3 hrs. Beam Distance: 211 ft. Batteries: 2 AAA Alkaline
Waterproof: 10 ft.
UKP-13330 Black
UKP-13334 Safety Yellow

2AAA Mini Pocket
eLED 35 Lumens



For use in Hazardous Locations Class 1, Div 1

Burn Time: 3 hrs. Beam Distance: 211 ft. Batteries: 2 AAA Alkaline
Waterproof: 10 ft.
UKP-09220 Black
UKP-09224 Safety Yellow

3AA eLED CPO 110 Lumens Cold Weather Light



For use in Hazardous Locations Class 1, Div 1

Burn Time: 8 hrs. Beam Distance: 304 ft. Batteries: 3 AA Alkaline Waterproof: 10 ft.

Tail Switch - UKP-10001 Safety Yellow, UKP-10022 Black
Front Switch - UKP-10005 Safety Yellow, UKP-10024 Black

4AA Right Angle Light
Xenon 38 Lumens
eLED 77 Lumens



For use in Hazardous Locations Class 1, Div 2

Burn Time: 4 to 5 hrs. Beam Distance: 311 ft. Batteries: 4AA Alkaline Waterproof: 10 ft.
Xenon - UKP-14191 Safety Yellow eLED - UKP-14524 Safety Yellow

3AAA eLED Vizion Headlamp 65 Lumens High, 35 Low Beam



For use in Hazardous Locations Class 1, Div 1

Spot, Diffuse, & Red Diffuse Beams Cloth Head Band

Burn Time: 13 hrs. high, 17 low
Beam Distance: 197 ft.
Batteries: 3 AAA Alkaline
Waterproof: 33 ft.
UKP-17001 Black, UKP-17002 Denim, UKP-17003 Desert, UKP-17004 Eco Green, UKP-17005

3AAA eLED Vizion Headlamp 65 Lumens High, 35 Low Beam



For use in Hazardous Locations Class 1, Div 1

Spot, Diffuse, & Red Diffuse Beams Rubber Hard Hat Band

Burn Time: 13 hrs. high, 17 low
Beam Distance: 197 ft. Batteries: 3 AAA Alkaline Waterproof: 33 ft.
UKP-17006 Black with Rubber Band UKP-17007 Yellow with Rubber Band

UK 300 Xenon
53 Lumens



For use in Hazardous Locations Class 1, Div 2

Burn Time: 4 to 5 hrs.
Beam Distance: 584 ft.
Batteries: 3 C Alkaline
Waterproof: 10 ft.
UKP-22016 Safety Yellow UKP-22009 Black

UK Nitex Pro Rechargeable
eLED CPO 90 Lumens



Cold Weather Light

For use in Hazardous Locations Class 1, Div 2

Burn Time: 4 hrs.
Beam Distance: 500 ft.
Batteries: Rechargeable Lithium
UKP-12335 Black
UKP-12334 Safety Yellow
UKP-12348 6 station charger, 6 lights, Safety Yellow
UKP-12349 6 station charger, 6 lights, Black

125 LUMENS CLASS 1 DIV 1

eLED CPO Cold weather light, for use in Hazardous locations


Thermal Recovery System recycles heat from the LED to warm batteries for improved performance in cold weather.



Cold Weather Light

Lumens: 125
Burn Time: 32 hrs.
Beam Distance: 500 ft.
Batteries: 3 C Alkaline
Waterproof: 3 ft.

CL I, Div 1 CERTIFIED

 CL I, II, III DIV 1 GROUP C-G, T4 Exia

- UKP-22101 Safety Yellow, no batteries
- UKP-22107 Black, no batteries
- UKP-22109 Safety Yellow with batteries
- UKP-22110 Black with batteries

Aqualite Rechargeable



Ideal for Video with Go Pro Cameras or SeaLife

Power 1: 120 Lumens 8.8 hrs.
Power 2: 220 Lumens 4.2 hrs.
Power 3: 340 Lumens 2.3 hrs.
Power 4: 600 Lumens 1.3 hrs.

UKP-12401 AquaLite 90 for Go Pro
UKP-12406 AquaLite 65 for SeaLife
UKP-12849 Pro Pov pack Aqualite, arm,

Go Pro Accessories



- Freestyler Video kits
- Camera extension poles
- FlexGrips for camera & light
- Cases

Mini Q40 Xenon 38 Lumens



Dive Version

Burn Time: 4 to 5 hrs.
Beam Distance: 311 ft.
Batteries: 4 AA Alkaline
Waterproof: 500 ft.
UKP-14076 Blue
UKP-14078 Black
UKP-14080 Safety Yellow

Mini Q40 eLED Plus 77 Lumens



Dive Version

Burn Time: 4 to 5 hrs.
Beam Distance: 328 ft.
Batteries: 4 AA Alkaline
Waterproof: 500 ft.
UKP-14543 Blue
UKP-14545 Black
UKP-14546 Safety Yellow

SL3 eLED CPO 125 Lumens



Dive Version

Burn Time: 32 hrs. Beam Distance: 394 ft.
Batteries: 3 C Alkaline
Waterproof: 500 ft.
UKP-22201 Safety Yellow
UKP-22202 Black

SL4 Xenon 113 Lumens



Burn Time: 4 to 5 hrs.
Beam Distance: 804 ft.
Batteries: 4 C Alkaline not included
Waterproof: 500 ft.
UKP-80035 Blue
UKP-80037 Black
UKP-80045 Safety Yellow

SL4 eLED 400 Lumens



Burn Time: 10 hrs. Beam Distance: 622 ft.
Batteries: 4 C Alkaline
Waterproof: 500 ft.
UKP-80120 Blue
UKP-80121 Black
UKP-80022 Safety Yellow

SL6 Xenon 201 Lumens



Burn Time: 4 to 5 hrs. Beam Distance: 951 ft. Batteries: 6 C Alkaline
Waterproof: 500 ft.
UKP-18015 Blue
UKP-18017 Black
UKP-18026 Safety Yellow

Super Q Rechargeable 90 Lumens



Burn Time: 4 hrs.
Beam Distance: 407 ft.
Batteries: Rechargeable Lithium
Waterproof: 500 ft.
UKP-12201 Safety Yellow
UKP-12225 Black

C4 Xenon 139 Lumens Twin Lamps



Burn Time: 4 to 5 hrs. Beam Distance: 426 ft. Batteries: 4 C Alkaline
Waterproof: 500 ft.
UKP-19016 Safety Yellow Bulk
UKP-19012 Blue boxed
UKP-19013 Black boxed
UKP-19015 Safety Yellow boxed
Rechargeable kit optional

C4 eLED 275 Lumens High Beam 190 Lumens Low Beam



Burn Time: 8 hrs.
Beam Distance: 330 ft.
Batteries: 4 C Alkaline
Waterproof: 500 ft.
UKP-19050 Safety Yellow
UKP-19052 Black
Rechargeable kit optional

C8 Xenon 338 Lumens Twin Lamps



Burn Time: 4 to 5 hrs. Beam Distance: 531 ft. Batteries: 8 C Alkaline
Waterproof: 500 ft.
UKP-19433 Safety Yellow Bulk
UKP-19412 Blue boxed
UKP-19413 Black boxed
UKP-19418 Safety Yellow boxed
Rechargeable kit optional

C8 eLED 400 Lumens High Beam 270 Lumens Low Beam



Burn Time: 14 hrs. Beam Distance: 494 ft. Batteries: 8 C Alkaline
Waterproof: 500 ft.
UKP-19520 Safety Yellow
UKP-19521 Black Rechargeable kit optional

D8 Xenon 367 Lumens



Burn Time: 7 to 10 hrs. Beam Distance: 604 ft. Batteries: 8 D Alkaline
Waterproof: 500 ft.
UKP-45053 P.G. Safety Yellow
UKP-45022 P.G. Black

Light Cannon eLED 825 Lumens



Burn Time: 9 hrs.
Beam Distance: 520 ft. Batteries: 8 C Alkaline
Waterproof: 500 ft.
UKP-44651 P.G. Safety Yellow
UKP-44652 P.G. Black
UKP-44653 L.G. Safety Yellow
UKP-44654 L.G. Black
Rechargeable kit optional

Warning Light Beacon High Visibility Red Marker



Always on, no annoying flashing
Burn Time: 24 hrs.
Batteries: 2 AAA Alkaline
Waterproof: 500 ft.
Part Number UKP-13701

Responder® LP Series

SUPER-LED® MINI LIGHTBARS

Now a low profile mini lightbar that provides all the high performance LED warning and signalling benefits, in a smaller size that fits all your special applications.

Super-LED modules in a rugged aluminum or polycarbonate base are built to take the roughest conditions and long hours you face. They're road tested, vibration and moisture resistant and use a much lower current than other warning lights. Put a Responder LP to work on your utility, security, fleet, construction or public works vehicle.

RDLPPAB shown in both Amber and Blue modes.

DUO



LES-R1LPMA

LES-R1LPVF

LES-R2LPHPR

FEATURES

- Class 1, SAE J845 Certified.
- 100,000 hour rated life.
- Six Super-LED modules.
- Choose from R1LP Series with Conical modules or R2LP Series with Linear-LED® modules.
- DUO™ technology model has different color LEDs in the same module allowing lightbar to flash different colors.
- Built-in electronic flasher with 46 Scan-Lock™ flash patterns including 4 simulated rotating patterns.
- ActionScan™ is the default flash pattern on all mount versions.
- Dual switch cigar plug allows pattern selection in magnetic and magnetic-suction mount models.
- Permanent mount includes 6" pigtail; magnetic and magnetic/suction mounts include 10' straight cord with dual switch cigar plug
- Polycarbonate dome with smooth exterior will not gather dirt and dust.
- 12 VDC.
- R1LP models: 3.0 amp draw (peak), 1.2 amp draw (avg).
- R2LP models: 6.0 amp draw (peak), 2.4 amp draw (avg).

CON3™ MODELS

Polycarbonate Base

- LES-R1LPP*Permanent mount
- LES-R1LPM*Magnetic mount
- LES-R1LPV*Magnetic/Suction mount

Aluminum Base

- LES-R1LPHP*Permanent mount
- LES-R1LPHM*Magnetic mount
- LES-R1LPHV*Magnetic/Suction mount

Polycarbonate Base Dual Color

- LES-R1LPPFPermanent mount, driver side Amber & passenger side White with Clear dome

- LES-R1LPMFMagnetic mount, driver side Amber & passenger side White with Clear dome

- LES-R1LPVFMagnetic/Suction mount, driver side Amber & passenger side White with Clear dome

* Replace symbol with LED color desired, A= Amber, B= Blue and R= Red.

Linear-LED® MODELS

Polycarbonate Base

- LES-R2LPP*Permanent mount
- LES-R2LPM*Magnetic mount
- LES-R2LPV*Magnetic/Suction mount
- LES-RDLPPABDUO, permanent mount, Amber/Blue

Aluminum Base

- LES-R2LPHP*Permanent mount
- LES-R2LPHM*Magnetic mount
- LES-R2LPHV*Magnetic/Suction mount

OPTIONS

- LES-R1\$\$\$00Six CON3 Super-LED modules, insert color, no charge when ordered with R1 split color models

- LES-R2\$\$\$00Six LIN6™ Super-LED modules, insert color, no charge when ordered with R2 split color models

Replace " * " with an "S" and use Lighting Package R1\$\$\$00 for R1 models and R2\$\$\$00 for R2 models. Replace Symbol "\$" with the number of color LED lightheads required (maximum of six). Order of color is Red, Blue and Amber.



Available in Red, Amber, and Blue

WHELEN®

Part No.	Beam Pattern	Bulb Type	Brightness	Run time
JLC-54001	Spot /Flood	12W	1000Lm	1.5(High)-8H(Low)



Magnetic LED Work Light Rechargeable Cree 12W

- Battery: 3.7V/ 3600Ah Lithium
- 120 degree rotatable light head
- Low energy consumption
- IP Rating: IP 69
- Charging time: 8H
- Impact and vibration-resistant

Part No.	Beam Pattern	Bulb Type	Brightness	Run time
JLC-59912	Spot	12W	1000Lm	1.5(High)-8H(Low)

High Brightness Cree 12W Handheld Rechargeable light

- Battery: 3.7V 3600mAh
- 120 degree rotatable light head
- Charging time: 8H
- 3 Switch mode: High/Low /Strobe
- Includes: USB Charger and shoulder belt



Part No.	Beam Pattern	Bulb Type	Brightness	Run time
JLC-7501	Spot	12W	470Lm	2.5(High)-5.5(low)



Maintenance Work Light Cree 12w Rechargeable Emergency Led Light

- Battery Type: 3.7V 3600mAh
- 4 per-set light output levels
- Signaling mode
- Built-in attachment hook and locking latch
- Charging Time: 10 hrs

Part No.	Beam Pattern	Bulb Type	Brightness	Run time
JLC-9625	Spot	25W	2000Lm	3H

25 Watt Handheld Spotlight With Aluminum Alloy Head

- Battery type: 7.4V 2.6Ah Lithium
- High impact resistant body
- Lightweight for easy use with ergonomic pistol grip
- Easy on/off
- Charging Time: 3h
- Rating: 1P69



Part No.	Beam Pattern	Bulb Type	Brightness	Run time
JLC-17045	Spot	45W	4000Lm	3H

High Power Outdoor Handheld 45 Watt Cree Led Spotlight

- Waterproof, Dustproof, Shockproof
- High impact resistant body
- Lightweight for easy use with ergonomic pistol grip
- Easy on/off



Part No.	Beam Pattern	Bulb Type	Brightness	Run time
JLC-829	Spot/Flood	20W	1800Lm	1.5H(High)-4H(Low)

Portable LED Lighting System 20w Waterproof Rechargeable Tripod Work Light

- Battery: 7.4V 4000mah Lithium
- 12 degree spotlight
- 60 degree flood light
- 120 degree rotation head light
- Mass Height Extended 1.6 m
- Waterproof IP69



Part No.	Beam Pattern	Bulb Type	Brightness	Run time
JLC-23181524	Spot	24W	1800Lm	6.5H(High)-26H(Low)



Portable Telescopic Light Tower 24w Rechargeable Led Remote Searchlight

- 12V 7Ah Lead Acid OR 8.8ah lithium Battery
- Total Height:0.82M
- Supplied Low/ Mid/ High/SOS Switch
- Charging Time: 7-8h
- Case Size : 23x18x15cm

Part No.	Beam Pattern	Bulb Type	Brightness	Run time
JLC-9936	Flood	36W	2200Lm	6H(High)-20H(Low)

36w AC/DC Charger Rechargeable Led Area Light

- Battery type 12V 10Ah Lithium / 12V 17Ah Lead-acid
- Low battery warning intermittent blinking
- IP Rating: IP69
- Beam Spread: 360 Degrees
- Mass Height Extended: 55.11" (145 cm)
- Charging time 8-10 hours



Part No.	Beam Pattern	Bulb Type	Brightness	Run time
JLC-55180	Spot	80W	5000Lm	8H(High)-25H(Low)



80W Rechargeable Cree Lights With 360 Degree Rotating

- Comes with convenient low battery warning system and waterproof activation switch
- Fully extendable mast with 360° rotating head
- Digital display to show battery capacity
- Beam Spread : 360 Degrees
- IP Rating: IP659

Part No.	Beam Pattern	Bulb Type	Brightness	Run time
JLC-54144	Spot/Flood	144W	8000Lm	7H(High)-25H(Low)



144 Watt Portable Scene Lighting

- 30 degree spotlight
- 60 degree flood light
- Comes with convenient low battery warning system and waterproof activation switch
- Telescoping handle and rugged wheels for ease of transport
- Battery Charging Time: 10H
- Mass Height: 78.74" (2 m)

Part No.	Beam Pattern	Bulb Type	Brightness
JLC-835	Flood/Spot	120W	12000Lm

120W Tripod LED Work Light 3M

- 12 degree spotlight
- 360 degree flood light
- Mass Height: 3M
- IP Rating: IP69
- 4M cable
- High/Middle/Low Switch



Part No.	Beam Pattern	Bulb Type	Brightness	Run time
JLC-839	Spot/Flood	120W	12000Lm	3-20 hrs



120W Tripod LED Work Light 2.6M

- High/Middle/Low Switch
- 12 degree spotlight, 360 degree scene light
- Mass Height: 2.6M, Weight: 10.5kg
- Waterproof IP 69
- AC/DC Charger
- Charging Time: 8-10H

PROVIX.NET
Now I CAN SEE!

CALL TOLL FREE: 1-888-434-0253

CONTACT: SALES@PROVIX.NET

VISIT: WWW.PROVIX.NET

ISO 9001: 2015 Certified